

Beth Emeth Observer

BETH EMETH CONGREGATION OF THE WEST VALLEY



Follow us:  

Rabbi Lev Ettelson

Spiritual Leader & Director of Education

13702 W. Meeker Blvd., Sun City West, AZ 85375

office@bethemethaz.org www.bethemethaz.org

Office hours: Mon-Fri - 9:00 am - 12:00 pm 623-584-7210

Sivan - Tamuz - Av 5786

June - July 2026

**This is a special 2 month
issue of the Observer.**

We welcome summer, we say **מזל טוב**
and congratulations to Reb Lev as he becomes our Rabbi,
and we already busy planning for the High Holidays.

☆ **Please note that Reb Lev will be away for the month of June.**

Shabbat Candle Lighting Times - June and July



6/5	7:19 pm	7/3	7:26 pm
6/12	7:22 pm	7/10	7:24 pm
6/19	7:25 pm	7/17	7:21 pm
6/26	7:26 pm	7/24	7:17 pm
		7/31	7:12 pm

In this issue :

Congregation updates	2 From the 3rd Vice President	11 Birthdays	21
From the Editor	3 From the 4th Vice President	12 Anniversaries	22
Presidents Message	4 Board Directors	13 - 14 High Holiday Schedule	23
From the Rabbi's Study	5 - 6 Judaica Shop	14 Sisterhood	24 - 29
Men's Club	7 Office Administrator	15 Chesed Committee	29
Sisterhood Event	8 Book of Remembrance	16 Yahrzeits	30 - 31
Open House	9 Treasurer	17 - 19 Donations	32
From the Past President	10 Etz Chaim/Yahrzeit Board	20 Advertising	33
		Calendar	34 - 35

What's happening in and around the Congregation

Weekly Services:

- ✧ Thursday morning Minyan service in the Library at 9:00 am
- ✧ Friday evening service in the Sanctuary at 6:00 pm
- ✧ Shabbat morning service in the Sanctuary at 9:30 am

Upcoming classes with Reb Lev

- ✧ Our Torah classes continue in July on Thursday mornings in the Library at 11:00 am. Zoom information is sent out in advance of the class.
- ✧ **NO CLASSES IN JUNE**

- ✧ **Our Grief Support Group meets on Tuesdays, at 4:00 pm facilitated by Judi Weinberg, R.N.**

I want to thank everyone for being a great support family, for being a support to Michael while he was alive and being there for me. Thank you to all who came to his funeral to Shiva. Thank you for the food, cards, donations, phone calls and visits. Michael loved going to Shul to pray, sing, and talk with people. He is missed by many, and I miss him every day.

Thank you.

Judi Weinberg

5787 High Holiday Greeting Card

Again this year, the Congregation will be sending out a High Holiday Greeting card to all our members wishing them a Sweet and Happy L'Shanah Tovah.

We hope your name will be included on the card.
Cost is only \$18

Call the office to be part of this fundraiser!
Cash, Check, Zelle or Credit Card
623-584-7210
(Deadline is September 5th)

From the Editor's desk!



And just like that, it's summer! The Snowbirds have flown back East, the heat has returned, we are getting ready to have the solar panels turned on, and as always, there is a flurry of activity going on at the Synagogue with Sisterhood, the resurgence of the Men's Club, and Congregation events.

The fantastic news that Reb Lev is now officially the Rabbi at Beth Emeth Congregation of the West Valley has been met with tremendous excitement.

While the ink is still drying on his certificate, there are plans in the works in **August for his Rabbinic Installation Ceremony at Beth Emeth Congregation.**

Additionally, a gala celebration in his honor will take place later this year. Details will follow as we have them!

Watch your email and fliers in the Lobby.

As we look forward to the High Holidays, you will be called upon to donate...to the High Holidays greeting card, the Book of Remembrance and of course to make sure your dues are paid.

We are all aware of rising costs...at the gas station, in the grocery store (even I am complaining at COSTCO), travel and more, but we hope that you will still make **your Synagogue** a priority. All of our costs have risen as well. Each donation matters, no matter the amount.

As you have seen, we have the Arizona Rangers at our front doors more and more often. We have established an earmarked fund for Security.

Please continue to send me your comments, thoughts and ideas for future issues of the Observer.

I hope you have a wonderful summer, stay cool, stay well, stay safe.

I look forward to sending you the next Observer in August.

B' Shalom,

Marlene Friedlander
Editor, Observer
editor@bethemethaz.org

Volume 2026—Number 27



FROM THE DESKS OF YOUR CO-PRESIDENTS ARNOLD BECKER AND NATALIE MORRISON



Our honoree this month Leah Tarnor is a very special woman. Natalie met Leah during her first week in Arizona while taking an exercise class at the Adobe swimming pool at The Grand. Leah came up to her and introduced herself, and they started talking. They became instant friends. That was 19 years ago in 2007. They shared that they both belonged to the Shalom Club at The Grand and that they both attended services at Beth Emeth Congregation. Natalie told her that she and Marty had just joined the synagogue. Leah, Natalie and their husbands started going out regularly and had wonderful times, and the rest is history! Leah and Charlie met Arnie when they first came to Surprise from Massachusetts in 2004. The first thing they did was join the synagogue.

Leah is on the Board as a Director and has been on the committee for Reb Lev's contract. She has been very upbeat and always has great ideas. As a committee member, she is the first to respond and comment on any changes. She has been an asset to the committee and the Board.

Recently Leah stepped up to revitalize the Chavurah program. She placed an ad in the Observer and she received many responses.

She had the first Chavurah meeting at her and Charlie's home and had everyone from the Chavurah join her family for the first night of Passover Seder. Leah made the main dishes of brisket, turkey, and tzimmes, while everyone else brought desserts and wine. Charlie led the service and everyone participated. It was a warm and delightful evening and everyone enjoyed themselves. A second Chavurah is now forming under Leah's direction. Thank you Leah for stepping up with this program.

In addition to helping her husband at home, she is the first to help clean up after Kiddush lunch on Shabbat. When needed she also helps in the kitchen when there is a sponsored Kiddush, helps to bake hamantaschen, or helping out at other very special events.

One of her pet peeves is that it is hard to find Kosher foods in Surprise. Trader Joe's has some kosher meats and poultry but is hard to find other Kosher groceries. She has always called this area of the desert: "The Wild Wild West". More of her unusual quotes are: "IT Is What It Is", and "What Can I Say".

You will always see Leah sitting against the back wall on Shabbat. Please greet her when you are at services.

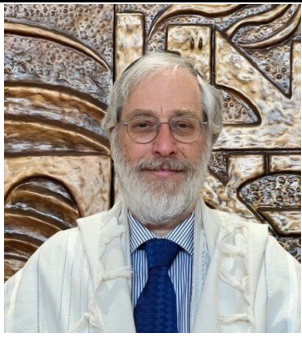
Leah, thank you for all you do for Beth Emeth Congregation and your family.

Natalie and Arnie



Reflections on Torah and Tradition

Rabbi Lev Ettelson



We hold these truths to be self-evident, that all men are created equal, that they are endowed by their Creator with certain unalienable Rights, that among these are Life, Liberty and the pursuit of Happiness. (Declaration of Independence)

We the People of the United States, in Order to form a more perfect Union, establish Justice, insure domestic Tranquility, provide for the common defence, promote the general Welfare, and secure the Blessings of Liberty to ourselves and our Posterity, do ordain and establish this Constitution for the United States of America.

As we are poised to mark the 250th anniversary of the founding of the United States of America, it is a time not only to celebrate, but also to reflect on the vision embodied in the foundational documents of our nation. As Jews we have a rich tradition of engaging with text in such a way as to acknowledge differing points of view while maintaining mutual respect. Faith250 is an interfaith organization founded by Rabbi Michael G. Holzman of the Northern Virginia Hebrew Congregation. The program—which operates in partnership with the civic organization, A More Perfect Union—aims to strengthen democratic values by encouraging clergy and congregants of different faiths to discuss and reflect on texts like the Declaration of Independence. What unites us as Americans is stronger than that which divides us.

There are many ways in which American values echo Torah values. “The New Colossus” written by Emma Lazarus, a 4th generation Jewish American immigrant, is engraved on the base of the Statue of Liberty: “Give me your tired, your poor, Your huddled masses yearning to breathe free...” How many of our ancestors came to these shores seeking refuge from persecution, seeking the freedom to live as Jews free from fear, gazed upon that, “mighty woman with a torch, whose flame... Glows world-wide welcome.”

My great-great-grandparents on my mother’s side, Rev. Henri and Jeanette Schul emigrated from France in the 1870s seeking opportunity. Rev. Henri served as the cantor of the Mound Street Temple in Cincinnati, 1878-81 and then as the Rabbi of Temple Emanu-El in Dallas from 1881-1883. My great-great-grandparents on my father’s side, Rav Noah and Sophia Efron, emigrated from Minsk in the early 1900s, already advanced in years, to Cedar Rapids Iowa where Sophia ran a dry goods store while Rav Noah studied Talmud and served the small Midwestern Jewish community until 1940 when he died at the age of one hundred. Unlike so many of their contemporaries, they escaped the fires of the Holocaust.

My generation (I am at the tail end of the Boomers) grew up amidst postwar prosperity during the “Golden Age” of American Judaism. The restrictions and quotas (which persisted into the 1960s) placed on Jews for college admissions, club membership, and buying homes in certain neighborhoods are but a faint memory. It seemed that

antisemitism witnessing the resurgence of “the oldest hatred,” antisemitism. The silver lining in this cloud is that more Jews are reaffirming our uniqueness, celebrating our heritage and building stronger Jewish communities.

Thirty years ago my mentor, Rabbi Zalman Schachter-Shalomi (who helped me find my way back to Yiddishkeit), asked me two questions that would influence the course of my life: “Have you considered becoming a rabbi?” And, “Whom would you serve?” These questions have been like Zen Koans that I have wrestled with for decades. I have had a variety of vocations and avocations throughout my life, including holistic health, theater and teaching which in many ways has prepared me for my calling as a rabbi. I have resisted that call many times, experiencing self-doubt, struggles with faith and fear of assuming the mantle leadership. For many years I asked myself, “who am I to be a Rabbi?”

I find inspiration in the words of Hillel, “If I am not for myself, who am I? If I am not for others, what am I? If not now, when?”

Now is the time to embrace the totality of our being. As Jews, as Americans and as human beings sharing a common destiny with all beings on this big beautiful planet we call home. William Shatner (a Canadian Jew by birth), who for decades played the intrepid space explorer, Captain James Kirk, at the age of ninety became the oldest person to experience space travel aboard Blue Origin’s New Shepherd. “I hope I never recover from this,” he said at the time. “I’m so filled with emotion about what just happened. It’s extraordinary, extraordinary.” A year after touching down back on Earth, Shatner wrote: “I discovered that the beauty isn’t out there, it’s down here, with all of us. Leaving that behind made my connection to our tiny planet even more profound.”

The Torah teaches us the importance of expressing gratitude everyday for the many gifts of life. To affirm our shared humanity by recognizing that all are created in the Divine Image. To cherish all forms of (animate and inanimate) life as beings which emanate from the Source of Life. To remember our original mission as stewards of this world. That is why the prophet Zechariah said to Israel: “Execute true justice, and...do not exploit the widow, the orphan, the stranger, and the poor” (Zechariah 7:9–10).

In August, God willing, we will have a “Rabbinic Installation Ceremony” to celebrate my ordination as a Rabbi and my ongoing relationship with Beth Emeth Congregation of the West Valley. I hope you will join us as we continue our mission of providing a home for Jewish learning, prayer, connection, and service.

Am Yisrael Chai! The people of Israel live!

A handwritten signature in blue ink that reads "Reb Lev". The signature is written in a cursive, flowing style.



**Sunday, June 14, 2026
10:00 am - Noon**

The Men's Club is back!

**Join us in the Library for Bagels, Lox, Pastry
and Coffee as we exchange ideas to get the
Men's Club growing in the coming year.**

**Please RSVP to the Office
623-584-7210**

Please note that this is the original logo from Max Gimpel!



Tickets Now On Sale!



Beth Emeth Congregation
13702 W Meeker Blvd. SCW, AZ
Office hours 9:00am - Noon M-F

"Mr. G" Performing
Songs of the Rat Pack



Sisterhood Presents

"Mr G."

Sunday

June 14th, 2026
2:00-3:00 pm

Tickets \$15 each

Open to ALL

Light refreshments
following

Songs from Frank Sinatra,
Dean Martin, Joey Bishop, &
Sammy Davis Jr.
Not to be missed!

Checks must be payable to
Sisterhood !
Zelle to
sisterhoodbec1@gmail.com



Beth Emeth Congregation of the West Valley

Invites You
to
Join Us At Our
Annual Open House
And
Ice Cream Social
Sunday July 12th ~ 1:00 pm – 4:00 pm



All are welcome to attend!

Meet the Rabbi and our Board Members!

2026 High Holiday tickets will be available for purchase and pickup.

Featuring a Sing-along with Judy Hamer!

Beth Emeth Congregation of the West Valley

13702 W Meeker Blvd

Sun City West, AZ 85375

(623) 584-7210

bethemethaz.org

Security will be provided by the Arizona Rangers



Greetings from your Past President Marilyn Newberg

marilyn.newberg@bethemethaz.org

Please note that starting June 1, Kiddushim will be minimal unless sponsored.

If you are interested in sponsoring a Kiddush, please contact one of us:

Marilyn Newberg
marilyn.newberg@bethemethaz.org
or
Susan Hersch
susan.hersch@bethemethaz.org



Greetings From Your 3rd Vice President Arthur Bennett

arthur.bennett@bethemethaz.org

Repairing our Torah Scrolls - Fund reached goal!

As you know, our 4 Torot are in dire need of repair. Reb Lev will be transporting the 4 Torot to Nevada to the Sofer so they can be repaired. Due to the generosity of Sisterhood and many of our members, we were able to raise all the money needed for these repairs.

Thank you all for your generosity.

Alice Bernstein
Ann Goldfarb/Clapp
Arnold Becker
Arthur Bennett
Barry and Claire Maultasch
Beverly Merchant
Brad and Marlene Friedlander
Bradley and Sherry Davidson
Carol Loewith
Diane Freilich
Dov and Suzan Giloni
Esther Toney
Evelyn Dragiff
Gary and Enid Cohen
Harvey and Rita Zarensky
Hazzan Douglas Ettelson
Irene Lehrer
Irene Weitzman
Iris Silverman
Irving Paul ("Paul") Jacobson
Jack Ezraty
Joan Rothfeld

Joel Levine
Jordan and Rosie Colbert
Judaica Shop
Judith Helderman
Judith Weinberg
Lael Summer
Lee and Sandra Shedroff
Linda Ziegler
Marty Corse
Marvin and Rita Beth Wachs
Max Berg
Millicent Levy
Minionaires
Natalie Morrison
Raymond J. and Debra R. Karam
Rita Pomerance
Ronald Paul
Sally Anne Hall
Sheldon Koven
Sheva Cohen
Sisterhood Beth Emeth
William Kram and Diane Shapiro

Greetings from your 4th Vice President

Joel Levine

joel.levine@bethemethaz.org



This month there have been 5 building Activities for Beth Emeth.

1. SOLAR PROJECT

Previous activities included installation of 79 Solar Panels, Inverters, and Circuit Breakers. Maricopa County Planning Department performed their inspection. It Passed Inspection and they issued a Certification certificate.

Then APS came to inspect project prior to installing the electrical meter. APS found some issues and did not install the meter. Therefore, Sun Installation needs to make those modifications prior to APS installing the electrical meter.

To date, Sun Installation has not made those repairs.

2. FIRE INSPECTION OF KITCHEN

Fire Master performed their fire inspection of the kitchen at Beth Emeth. They performed a 23 point fire inspection. All points, except for one, passed the inspection. The SUPRESSION FIRE UNIT failed. This is the unit that will trigger water to be released if a fire exists in the kitchen. The SUPRESSION UNIT was not UL300 compliant due to being outdated. The SUPRESSION UNIT contains the chemical fire retardant to extinguish the fire. Also 5 nozzles need to be replaced.

Estimated Cost of the SUPRESSION UNIT and the nozzles is \$675. Presently, the SUPRESSION UNIT needs to be ordered for its installion.to be in working order.

3. WEED CONTROL

Snyder's Weed Control performed their weed control of the perimeter of Beth Emeth. They performed Pre-emergent service for weed control. Snyder said they perform this service every 6 months. I am looking into other weed control companies that perform this service that would last one full year. This should provide some cost savings for Beth Emeth

4. PLUMBING ISSUES IN KITCHEN

Cool Blew plumbing company performed some work to fix a leaking kitchen sink. They replaced the Sink Restrainer. The leak was fixed

5. AED DEVICE

Each month the AED (Automated External Defibrillator) device is checked at the beginning of each month.

For the month of May the AED device is in working order.

If you see any building issues that need to be made please contact me at..

joel.levine@bethemethaz.org

Directors

Chavurah Group at Beth Emeth Congregation



Leah Tarnor, Director
chavurah.lt@bethemethaz.org

Shalom!

Beth Emeth Congregation's newly formed Chavurah met at the home of Brad and Marlene Friedlander on Sunday, May 17 for an amazing Brunch. We enjoyed traditional Jewish specialties of whitefish, smoked salmon, Brad's homemade gravlax with Marlene's pickled onions, cheeses, kugel, salads, homemade cinnamon rolls, pastry and fruit cobbler.

I joked that it was like being on a cruise ship enjoying the fabulous food and not worrying about getting sea sick. We spent several hours in conversation and getting to know each other better, which is what a Chavurah is about.

Since several members will be traveling in June our next get together will be on July 5th at the home of Marvin and Rita Wachs. I hope those traveling can share some pictures with us when they get back.

We have two couples interested in starting another group! Please contact me if you want to join the group. I can be reached at leah.tarnor@bethemethaz.org or chavurah.lt@bethemethaz.org

Leah Tarnor





Gary Cohen, Director
Gary.cohen@bethemethaz.org

Annual Open House Approaching

The annual Open House at Beth Emeth Congregation of the West Valley will be taking place on Sunday, July 12th. The Open House and Ice Cream Social will be from 1 p.m. to 4 p.m. with the Arizona Rangers providing security for the event. At the Open House, people will be able to learn all about Beth Emeth and the variety of ways they can be involved at our synagogue. Those attending who are not members of Beth Emeth will be able to learn how they can become members and learn about the benefits of membership. In addition, 2026 High Holiday tickets will be available for purchase and pickup. The Open House will also feature a sing-along with Judy Hamer.

We look forward to seeing you there.

Gary Cohen



Please support Our Judaica Shop

Stop by anytime Monday– Friday 9:00 am—noon!
Payments accepted by cash, Credit card, check or Zelle!

Susan Hersch, Judaica Shop Manager
susan.hersch@bethemethaz.org



**From your Office Administrator
Pam Wehbi
office@bethemethaz.org**

Once I learned the difference between “kiddush” and “kaddish,” I knew I’d be ok. I’m not Jewish, so when Ann Goldfarb told me Beth Emeth was looking for someone to work in the office, I thought I might not be considered. That was not the case.

I called Arnie, met with him one day and Reb Lev the next, and I was hired! I felt good about being here the moment I walked in. I wasn’t so much an outsider as someone who just needed to learn a new language.

I’m a writer, and business was practically non-existent last year. This job was just what I wanted—part time and close to home (it’s a two-minute drive). The bonus is that everyone has been welcoming and supportive, and I am enjoying my time here even more than I expected I would.

There’s one more thing. Calling myself a “lapsed Lutheran” is an understatement. I can’t help but make comparisons between synagogue and church, though. It feels authentic here—the way organized religion should be. I’m not going to convert, but I do appreciate the devotion everyone shows to Judaism, the community, and the congregation.

I have also found a connection with several of the members who enjoy “thrifting” as much as I do. I always enjoy exchanging ideas about where to find great deals. I’m happy to be part of the Beth Emeth community.

Pam Wehbi



5787 BOOK OF REMEMBRANCE

May their names be remembered
From generation to generation

Dear Fellow Congregants,

During the High Holidays, we publish the *Book of Remembrance*, commemorating the lives of those we have loved and who have passed on. There will be a special page dedicated to the Six Million Jews who perished in the Holocaust and to recent victims of terrorism. In addition to honoring our loved ones, the *Book of Remembrance* is also a fundraiser for our Congregation.

You must list the names as you want them to appear in the *Book of Remembrance*. Fill out the names in full (do not say "same as last year"). Please bring/mail the completed form with your check to the Beth Emeth office by September 10, 2028.

Thank you for your continuing support.

Carol Loewith

Carol Loewith

THIS FORM MUST BE COMPLETE & CLEARLY PRINTED

My (Our) Name as it is to appear

IN LOVING MEMORY OF

Also add my/our name(s) to the Special Memorial page for the six million Jews and victims of terrorism. (\$18.00) To add more names, use a separate piece of paper.

Full Page \$ 136.00 _____
Half Page \$ 72.00 _____
Quarter Page \$ 36.00 _____

Special Page—6 Million Jews and Victims of Terrorism \$18.00 _____

Grand total \$ _____

My (Our) name: _____ Phone number: _____

Date: _____

Make checks payable to Beth Emeth Congregation
13702 W Meeker Blvd., Sun City West, AZ 85375
623-584-7210



Brad Friedlander, Treasurer

Marlene and I moved to Arizona at the end of May 2023. We went to Beth Emeth Congregation's Open House in August of 2023 and decided to join before we got home. After the High Holiday season, I approached the President and said: "Hineni! I'd like to serve on a committee." In January, I was elected to be your Treasurer. I quickly added a few more roles including Chair of the Technology Committee, and member of the By-Laws Committee.

Who Am I?

My religious background is eclectic. I was a military dependent and we moved a lot as did the Rabbis at our various duty stations. As a result, I was educated by Reform, Conservative, and Orthodox Rabbis. Services in military chapels were based on a conservative prayer book so that all would feel welcome.

A strong influence was my father. Dad emphasized that being a Kohen was not an entitlement, but an obligation to support and guide our fellow Jews. I have tried to put that into practice by being active in my various congregations: I have served on the Board of two congregations and was a Sh'liach K'hilah (lay leader) for my last congregation.

What Am I?

I've spent my working life developing and managing computer systems and applications. I am an engineer by education which aligns with how I approach any problem: understand the whole and drill down into any area that needs attention. I like things to be clearly defined, but I know that life is fuzzy (at best) and there are many more colors than black and white. My mind is a scientific sponge trying to absorb everything from subatomic physics and the inner workings of living cells to the cosmos and astrophysics. In all of this, I see the miracles of the creation of our universe.

What Now?

I have reached the point in my life where I am transitioning from working full-time to being retired and spending time traveling enjoying the rest of my life with my loving wife, Marlene.

B'shalom,

Brad



Treasurer's Financial Update

Brad Friedlander

treasurer@bethemethaz.org

Treasurer's Corner

Zelle Payments

You can pay your dues or make donations using Zelle.

Credit Card

You can pay using a credit card.

- Your credit card information can be securely stored.
- You'll automatically get a receipt emailed to you.
- Call the office to make a credit card payment.



Zelle QR Code

Funds Needing Your Support

Biblical Garden: The donation will only be used for the Biblical Garden project.

- There have been no expenses or income since last month.

Security Fund: The Board has created a new fund that will only be used for security expenses.

- We spend \$275 on armed security each Shabbat.
- High Holy Day security was \$1340 in 2025.
- The total for 2025 was \$20,130 (*i.e.*, holiday services and special events).

Torah Maintenance Fundraiser: We have reached our goal of \$13,000. This fundraiser is now inactive.

Save Taxes on Donations

If you have an IRA, please consider using a qualified charitable distribution (QCD).

- A QCD is part of your required minimum distribution (RMD) and is not taxable.
- Please see your financial advisor for details.
- You can include other donations besides your dues.
- Contact me for the Congregation's EIN which your IRA firm will require.

Please contact me at treasurer@bethemethaz.org if you have any questions.

Brad Friedlander, Treasurer

Treasurer's Financial Update

Your financial contributions enable us to provide the religious services and programs you want.

► Dues

Financial Status—2026 Year to Date

This is the same information that is presented at each Board meeting.

- The “Income 2026” and “Expense 2026” are the 2026 budget.
- We are \$13,752 behind in dues payments.

Committee	YTD Income	YTD Expense	FTEs	Income 2026	Expense 2026
Asset Changes		(\$280.00)	(0.4)	\$0	\$0
Biblical Garden	\$2,045.00	(\$374.00)	2.1	\$0	(\$5,000)
Building & Grounds	\$100.00	(\$21,258.67)	(26.4)	\$0	(\$60,952)
Capital	\$1.00		0.0	\$17,705	\$0
Catering	\$3,393.54	(\$5,813.37)	(3.0)	\$2,900	(\$3,950)
Employee Wages		(\$40,085.76)	(50.1)	\$0	(\$119,904)
Executive	\$65,528.00	(\$8,446.02)	71.4	\$73,200	(\$23,931)
Finance	\$66.80		0.1	\$0	(\$1,000)
Fund Raising	\$19,968.39	(\$5,742.06)	17.8	\$30,568	(\$3,200)
Gift Shop	\$44.16		0.1	\$0	\$0
Grant		(\$15,805.89)	(19.8)	\$0	\$0
Membership	\$42,498.00	(\$5,000.00)	46.9	\$71,280	(\$1,900)
Observer		(\$39.06)	(0.0)	\$0	\$0
Prior Year Dues	\$125.00		0.2	\$0	\$0
Ritual	\$1,771.00	(\$908.65)	1.1	\$31,425	(\$4,300)
Technology		(\$3,080.30)	(3.9)	\$0	(\$5,091)
Torah Maintenance	\$8,229.00		10.3	\$0	\$0
Yahrzeit Board		(\$418.00)	(0.5)	\$3,500	(\$1,350)
Grand Total	\$143,769.89	(\$107,251.78)	45.6	\$230,578	(\$230,578)

B'shalom,

Brad Friedlander, Treasurer

Etz Chaim—Our Tree of Life

I invite you to become part of the permanent legacy of our Synagogue. Through the end of the year, “leaves” on our Etz Chaim (Tree of Life) in our Lobby are just **\$99 each!**

“Apples” are only **\$150!**

Buy them for yourself or a loved one!

Or commemorating a special occasion! Let’s fill the Tree!

Happy to discuss with you how to place an order.

Natalie Morrison, Co-President

natalie.morrison@bethemethaz.org



Yahrzeit Plaques

We have many Yahrzeit plaque spaces available on our Sanctuary wall.

Yahrzeit plaques can be purchased in memory of someone who has passed away or be reserved for a future use.

Plaques are \$350 each.

Payment by cash, check, credit card or Zelle!

Forms available in the Office.

Please reach out to me for further information.

Arnold “Arnie” Becker, Co-President

Arnold.becker@bethemethaz.org





Rita Beth Wachs	6/4
Lee Shedroff	6/9
Joel Levine	6/10
Enid Cohen	6/14
Natalie Morrison	6/24
Rosemary Abrami	6/26
Rosie Colbert	6/27
Jordan Colbert	6/30
Elinor Goldstein	7/2
Alice Bernstein	7/3
Gyorgyi Rosenthal	7/4
Joseph Sontag	7/6
Sherry Lazar	7/12
Gary Cohen	7/15
Reva Litt	7/16
Jamie Rothschild	7/19
Michael Madvig	7/20
Jim Frank	7/22
Iris Silverman	7/27
Lael Summer	7/27



Harvey and Rita Zarensky **6/12**

Andrew and Jan Heidecker **6/14**

Leah and Charlie Tarnor **7/4**

Dov and Suzan Giloni **7/17**

Joy and Peter Epstein **7/24**

Bradley and Sherry Davidson **7/29**

Charles and Rebecca Breverman **7/30**



Mark your calendars: High Holidays at a Glance

A full schedule of services will be included
in the August Observer

Erev Rosh Hashanah	Friday, Sept.11
Rosh Hashanah Day 1	Saturday, Sept. 12
Rosh Hashanah Day 2	Sunday, Sept. 13
Fast of Gedalia	Monday, Sept. 14
Shabbat Shuva	Saturday, Sept.19
Erev Yom Kippur / Kol Nidre	Sunday, Sept. 20
Yom Kippur	Monday, Sept. 21
Erev Sukkot	Friday, Sept. 25
Sukkot Day 1	Saturday, Sept.26
Sukkot Day 2	Sunday, Sept. 27
Sukkot Chol HaMoed	Monday- Wednesday, Sept. 28-30



Message from the Sisterhood President June 2026

In reflection, as we come to the close of our Sisterhood 2025-2026 calendar year, I was delightfully surprised. While this year was devastating for me and had medical challenges for Carol Madvig and her husband Michael, this year was remarkably successful. Thank you to everyone who helped make it all possible.

We started the year off with a flurry of great programs:
Yiddish Bingo,
Our Challah Bake,
Lunch in the Sukkah,
The Nicole Pesce Concert
(which raised \$630 for WLCJ Torah Fund),
we hosted the viewing of *Frontline Warriors*
(with a discussion about anti-semitism after the film)
we enjoyed a very unique Mystery & Munchies Program
(hands on learning and fun with authors, Ann Goldfarb and Cheryl Wilson)
and we hosted an Oneg after Sisterhood Shabbat.

Carol Madvig took the lead to ensure we were able to complete our Purim Hamantaschen Fundraiser (Thank you Carol and to all those that helped her). We split the profits with the congregation earning almost \$2,000 each. In April we had a Pot Luck with a little Torah learning to mark the Sheloshim of my husband Jim's passing. In May we enjoyed a lunch out together and on June 14th we will conclude the year with a musical program: "Mr. G" performing songs from the Rat Pack Area (songs sung by Frank Sinatra, Dean Martin, Joey Bishop, and Sammy Davis Jr.). Tickets are on sale in the office for only \$15. Be sure to get yours. You don't want to miss out. It will to be a fun afternoon.

In addition to the \$1967.97 from Purim Baking profits, Sisterhood donated \$2,180 towards the cost of the kitchen air conditioner, \$1,000 for Torah repairs, \$180 to the Biblical Garden Fund, \$150 towards security, spent \$109.46 to initially stock the kitchen in the fall and donated additional food items for several kiddushes. We paid \$500 in honorariums for the musical programs and we will donate the additional \$150 for security for the June Program after the event.

Sisterhood sent \$500 to Feed Israel, \$690 to the friends of the IDF, \$630 to Mier Panim (the Phoenix Kosher Food Pantry) and sent \$180 to a sister congregation that required restoration after the California Fires.

Sisterhood made a significant difference while having fun together. I invite you to join us for the 26-27 year! You can help us continue to make a difference.

Ketzi Toney, Sisterhood President



13702 W Meeker Blvd. SCW, AZ 85375

Save the Dates
You don't want to miss out

June 14th 2:00-3:00 pm
Songs from the Rat Pack Era
(Frank Sinatra, Dean Martin, Sammy Davis Jr, Joey Bishop, and more)
Performed by "Mr. G",
Tickets \$15 now on sale!
Light refreshments after



October 8th
Fashion Show
by **New Image Fashions.**
Watch for details coming soon!

November 15th 2:00-3:00 pm
Jazz Concert by Jazzona
Tickets \$18 each
Will go on sale in October



These Programs
Are Open
To ALL!



**Sisterhood Meetings and Events
June - Dec 2026**

MONTH	DATE / TIME	MEETING	PROGRAM
JUNE	6/9 10:30 am	X. SH Meeting	
	6/14 2-3:00 pm		Mr G Concert Tickets \$15 Deserts after Open to ALL
July	7/14 10:30 am	X. SH Meeting	
	7/19 2-3:00 pm		To Tell the Truth Free game day Deserts after For SH Members
August	8/11 10:30 am	X. SH Meeting	
	8/16 1-3:00 pm		Soup, Salad, & Skit \$15 Ladies M & NM
September	9/8 10:30 am	X SH Meeting	
October	*10/8 10-1:00 Thursday		Fashion Show Info and cost soon Ladies M & NM
	10/13 10:30 am	X SH Meeting	
November	11/10. 10:30 am	X SH Meeting	
	11/15. 2-300 pm		Jazzona Concert \$18 Desserts after Open to All
December	12/1 10:30 am	X X SH Meeting *1st wk not 2nd	
	12/6 5:30 pm		Chanukah Party Cost TBD Open to ALL



You're Invited

*To become a member of Sisterhood
Beth Emeth Congregation*

13702 W Meeker Blvd, SCW, AZ 85375

Sisterhood is affiliated with the Pacific Southwest Region of Women's League for Conservative Judaism (WLCJ). Our calendar year runs from July 1st through June 30th. Our membership drive for the 26-27 year is now underway. Part of your Sisterhood dues covers membership in WLCJ which, in addition to our Sisterhood programming, provides access to a host of webinars, opportunities to study with Scholars, and participate in creative Judaic arts.

*Sisterhood Membership is \$36 per year
for Beth Emeth members*

\$46 per year for non members

*Become a Beth Emeth Member and Sisterhood membership
is waived for the first year!*

*Sisterhood membership is a way to:
connect Jewishly with others, celebrate holidays,
commemorate special moments, learn together,
participate in Mitzvot and Tzedakah projects, contribute, socialize,
make new friends, feel part of a community/extended family
and have fun!*

We hope you will join us!

Please look for and complete our Sisterhood Membership Form...

We look forward to welcoming you!



MEMBERSHIP FORM for JULY 2026 - JUNE 2027

Congregation Member \$36 per year

Non Members \$46 per year

Includes membership in Women's League of Conservative Judaism

First year of Sisterhood Membership is Free for new Beth Emeth Members

Please complete and submit with your payment
Checks Payable to **Sisterhood** Beth Emeth Congregation
Or Zelle payment to sisterhoodbec1@gmail.com

Name _____ DOB _____

Address _____

City _____ Zip Code _____

Cell Phone # _____ Home Phone _____

Email _____ Anniversary Date _____

Emergency Contact _____

Relationship _____ Phone _____

Yes you may list my information on a Sisterhood directory **No please do not list**

Volunteer tasks I am able to help with check all that apply: take photos
 planning organizing kitchen food prep set up clean up
 phone calls driving car pool publicity computer work
 teaching a class leading an activity Please Specify

Types of Programs you enjoy _____



We are Women's League
Engaging, Enriching and Empowering Jewish Women
Women's League for Conservative Judaism

TRIBUTE CARDS FOR ALL OCCASIONS

MINIMUM DONATION OF \$5

Want to send cards yourself, purchase 5 cards for \$15

Cash, Checks to Sisterhood or

Zelle to sisterhoodbec1@gmail.com

Office hours M-F 9-noon 623-584-7210

13702 W Meeker Blvd. SCW AZ 85275

Chesed Committee

We are here to support you, our Congregation family. If you know of a Member in need, or if you have a need that we can support, do not hesitate to reach out to us!

- ✧ **Coordinate meals when support is needed**
- ✧ **Coordinate rides for medical appointments or doing local errands**
- ✧ **Helping with a Shiva or a Shiva Minyanim**
- ✧ **General acts of loving-kindness**
- ✧ **A call of caring**

Help Needed

Sometimes, we don't know all of the help that is needed within our community. If you or anyone you know needs help, please reach out to us.

Please contact the Office at 623-584-7210 or the Chesed Committee at chesed@bethemethaz.org.



*May their memories be blessed.
As We remember them...*



The following Yahrzeits will be observed during Sivan, Tamuz and Av. Kaddish may be said at Friday evening services (6:00 pm), and Saturday morning services (9:30 am). El Malei Rachamim, the Memorial prayer, may also be said at the Thursday morning Minyan (9:00 am) preceding the Yahrzeit date.

Date	Hebrew Date	Deceased	Observant	Relationship
2-Jun	Sivan 17	Bernerd Lowenthal	Joy Epstein	Brother
3-Jun	Sivan 18	Stephen Franek	Susan Hersch	Father
3-Jun	Sivan 18	Abe Sills	Enid Cohen	Father
5-Jun	Sivan 20	Phillip Dorman	Paula Forster	Father
6-Jun	Sivan 21	Barney Shedroff	Lee Shedroff	Father
6-Jun	Sivan 21	Julia Sontag	Joe Sontag	Mother
7-Jun	Sivan 22	Charlotte Lipschitz	Claire Maultasch	Mother
7-Jun	Sivan 22	Bart J. Gordon	Iris Silverman	Nephew
7-Jun	Sivan 22	Bessie Lazar	Max Lazar	Mother
11-Jun	Sivan 26	Seymour Hesch	Morrie Hesch	Brother
12-Jun	Sivan 27	Norman Freilich	Diane Freilich	Father
14-Jun	Sivan 29	Abe Epstein	Gail Davis	Grandfather
17-Jun	Tamuz 2	Bertram Kesten	Sandra Shedroff	Uncle
17-Jun	Tamuz 2	Sam Salmirs	Brad Friedlander	Grandfather
17-Jun	Tamuz 2	Sean Goldmark	Gail Davis	Nephew
18-Jun	Tamuz 3	Harry Lazar	Max Lazar	Father
18-Jun	Tamuz 3	Elsa Paul	Ron Paul	Mother
20-Jun	Tamuz 5	Ethel Zimmerman	Arnie Becker	Mother in law
21-Jun	Tamuz 6	George Tarasuk	Diane Freilich	Friend
26-Jun	Tamuz 11	Adele Friedlander	Brad Friedlander	Mother
1-Jul	Tamuz 16	Ben Lowenthal	Joy Epstein	Father
3-Jul	Tamuz 18	Harold Lessner	Marilyn Newberg	Bother in law
4-Jul	Tamuz 19	Irving Scher	Ann Goldfarb/Clapp	Father
5-Jul	Tamuz 20	Ben-Yosef Israel	Shoshana Perlmutter	Father
7-Jul	Tamuz 22	Molly D. Merchant	Beverly Merchant	Mother-in-law

Date	Hebrew Date	Deceased	Observant	Relationship
18-Jul	Av 4	Eli Witt	Natalie Morrison	Father
18-Jul	Av 4	Murray Bernstein	Alice Bernstein	Father-in-law
19-Jul	Av 5	Hanna Behrendt	Tom Behrendt	Mother
19-Jul	Av 5	Morris Silverman	Iris Silverman	Father
19-Jul	Av 5	Linda Goldmark	Gail Davis	Sister
21-Jul	Av 7	Simon Newman	Barbara Newman	Father
22-Jul	Av 8	Ida Lee	Joanie Jacobs	Mother
23-Jul	Av 9	Isser Koven	Sheldon Koven	Grandfather
23-Jul	Av 9	Gus Forster	Paula Forster	Father in law
23-Jul	Av 9	David Perlmutter	Myron Perlmutter	Father
25-Jul	Av 11	Nettie Freilich	Diane Freilich	Mother
26-Jul	Av 12	Bertha Rothschild	Jamie Rothschild	Grandma
29-Jul	Av 15	Melvin J. Silverman	Iris Silverman	Brother
29-Jul	Av 15	Hanan Ben-Yosef	Shoshana Perlmutter	Brother
31-Jul	Av 17	Robert Fisher	Shelly Moschel	Father
31-Jul	Av 17	Isador William Friedlander	Brad Friedlander	Grandfather

Donations - Todah Rabah for your generous support!

Yahrzeits

Jack Ezraty
In memory of Victor Ezra
Sheldon Koven
In memory of Asna Moskowitz
Max and Sherry Lazar
In memory of Arthur Dorf
William Kram and Diane Shapiro
In memory of Ruth Kram
Irene Lehrer
In memory of William and Gertrude
Besselman

Rochelle Bailey
In memory of Carl Sherman
Marvin and Rita Beth Wachs
In memory of Muriel Rosenberg
Barry and Claire Maultasch
In memory of Jack Lipschitz
Saul and Sharon Rothzeit
In memory of Frances Rothzeit
Brad and Marlene Friedlander
In memory of Sam Salmirs and Adele Friedlander
Joan Rothfeld
In memory of Betty Rothfeld

Fundraising

Arthur Bennett
Natalie Morrison
Susan Hersch
Harvey and Rita Zarensky
Irene Lehrer
Lee and Sandra Shedroff

Arnold Becker
Mark and Madelaine Friedman
Gyorgyi Rosenthal
Leah and Charlie Tarnor
Dov and Suzan Giloni

Donation – Member

Rochelle Bailey
Sally Anne Hall
Leah and Charlie Tarnor
Bradley and Sherry Davidson
Gail Davis
Gary and Enid Cohen

Natalie Morrison
Sonia Marshall
Marvin and Rita Beth Wachs
Evelyn Dragiff
Dov and Suzan Giloni

Donation Non-Member

Marisela Erichsen
Phyllis Bern

Kiddush Fund

Brad and Marlene Friedlander
Rosemary Abrami

Sponsored Oneg

Brad and Marlene Friedlander
Jessica Mehlman
Harvey and Rita Zarensky

Torah Maintenance Fund

Sisterhood Beth Emeth
Brad and Marlene Friedlander
Evelyn Dragiff
William Kram and Diane Shapiro

Minionaires Donations

Minionaires

Yizkor

Irene Lehrer

Book of Remembrance

Arnold Becker

Biblical Gardens

Arnold Becker
Leah and Charlie Tarnor
William Kram and Diane Shapiro
Sonia Altman
Joy and Peter Epstein

In-Kind Donations*

Marilyn Newberg
Arnold Becker
Iris Kingma-Johnson
Brad Friedlander
Marlene Friedlander
*Board Members

Ritual Donations

Ronald Paul

We appreciate each and every donation that we receive. If acknowledgement of your donation did not appear in this month's listing, please check back next month. Todah Rabah for your support of Beth Emeth Congregation of the West Valley!!

Grandview Terrace brings new meaning to *Independent Living*

Just steps from their front door, residents have access to a plethora of dining options, a bustling social scene, and a wealth of amenities—all conveniently located under one roof.

In addition, residents receive membership to Sun City West's state-of-the-art recreational center and social amenities, including championship golf courses and dozens of charter clubs. It's another way that **Grandview Terrace** makes it easy to live a healthy and happy life.

Explore Your Options with Confidence

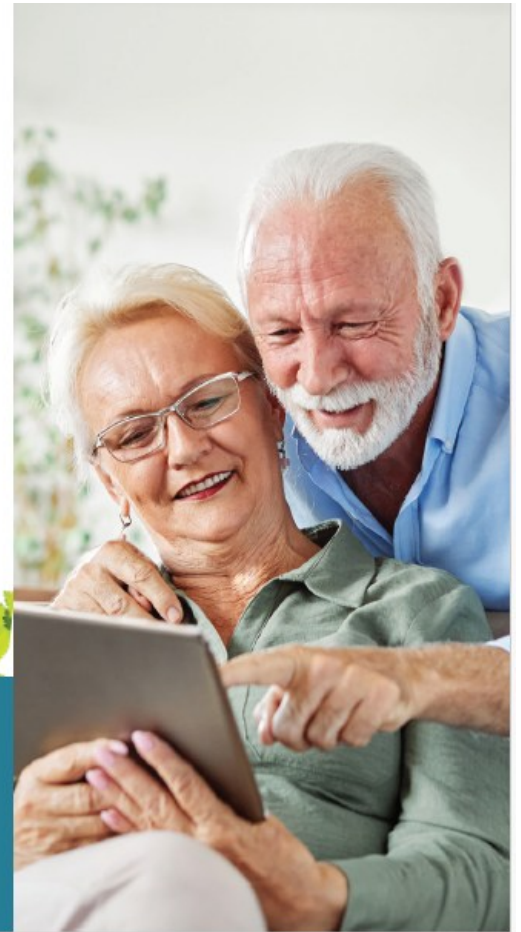
Assess the financial compatibility of **Grandview Terrace** with your retirement plan. Try our simple calculator for an instant, obligation-free estimate.



GRANDVIEW TERRACE

Call our sales office at (623) 975-8014 to schedule a tour!

SunHealthCommunities.org/grandview



Camino del Sol FUNERAL CHAPEL & CREMATION CENTER

At Camino del Sol Funeral Chapel and Cremation Center, it is our mission to meet every need of the families we serve. Family-owned and operated, Camino del Sol is proud to serve the surrounding communities since 1989. You can count on us today, and for generations to come!

(623) 584-6299

www.caminodelsol.com



June 2026

SUN 31	MON Jun 1	TUE 2	WED 3	THU 4	FRI 5	SAT 6
15th of Sivan	16th of Sivan	17th of Sivan ● 4pm Grief Support Group	18th of Sivan	19th of Sivan ● 9am Morning minyan	20th of Sivan ● 6pm Kabbalat Shabbat ● 7:19pm Light Candles at: 7:19 PM	21st of Sivan Parashat Beha'alotcha ● 9:30am Shabbat Service ● 8:21pm Shabbat Ends: 8:21 PM
7	8	9	10	11	12	13
22nd of Sivan	23rd of Sivan	24th of Sivan ● 10am Sisterhood Meeting ● 4pm Grief Support Group	25th of Sivan	26th of Sivan ● 9am Morning minyan	27th of Sivan ● 6pm Kabbalat Shabbat ● 7:22pm Light Candles at: 7:22 PM	28th of Sivan Parashat Sh'lach ● 9:30am Shabbat Service ● 8:24pm Shabbat Ends: 8:24 PM
14	15	16	17	18	19	20
29th of Sivan ● 10am Men's Club breakfast ● 2pm Sisterhood event	30th of Sivan Rosh Chodesh Tamuz	1st of Tamuz, 5786 Rosh Chodesh Tamuz ● 9:30am Board meeting ● 4pm Grief Support Group	2nd of Tamuz	3rd of Tamuz ● 9am Morning minyan	4th of Tamuz ● 6pm Kabbalat Shabbat ● 7:25pm Light Candles at: 7:25 PM	5th of Tamuz Parashat Korach ● 9:30am Shabbat Service ● 8:26pm Shabbat Ends: 8:26 PM
21	22	23	24	25	26	27
6th of Tamuz	7th of Tamuz	8th of Tamuz ● 4pm Grief Support Group	9th of Tamuz	10th of Tamuz ● 9am Morning minyan	11th of Tamuz ● 6pm Kabbalat Shabbat ● 7:26pm Light Candles at: 7:26 PM	12th of Tamuz Parashat Chukat-Balak ● 9:30am Shabbat Service ● 8:27pm Shabbat Ends: 8:27 PM
28	29	30	Jul 1	2	3	4
13th of Tamuz	14th of Tamuz	15th of Tamuz ● 4pm Grief Support Group	16th of Tamuz	17th of Tamuz Tzom Tammuz ● 9am Morning minyan	18th of Tamuz ● 6pm Kabbalat Shabbat ● 7:26pm Light Candles at: 7:26 PM	19th of Tamuz Parashat Pinchas ● 9:30am Shabbat Service ● 8:27pm Shabbat Ends: 8:27 PM

July 2026

Tamuz - Av 5786

SUN 28	MON 29	TUE 30	WED Jul 1	THU 2	FRI 3	SAT 4
13th of Tamuz	14th of Tamuz	15th of Tamuz ● 4pm Grief Support Group	16th of Tamuz	17th of Tamuz Tzom Tammuz ● 9am Morning minyan 11 am Torah Class	18th of Tamuz ● 6pm Kabbalat Shabbat ● 7:26pm Light Candles at: 7:26 PM	19th of Tamuz Parashat Pinchas ● 9:30am Shabbat Service ● 8:27pm Shabbat Ends: 8:27 PM
5	6	7	8	9	10	11
20th of Tamuz	21st of Tamuz	22nd of Tamuz ● 4pm Grief Support Group	23rd of Tamuz	24th of Tamuz ● 9am Morning minyan 11 am Torah Class	25th of Tamuz ● 6pm Kabbalat Shabbat ● 7:24pm Light Candles at: 7:24 PM	26th of Tamuz Parashat Matot-Masei ● 9:30am Shabbat Service ● 8:25pm Shabbat Ends: 8:25 PM
12	13	14	15	16	17	18
27th of Tamuz Open House 1:00 pm	28th of Tamuz	29th of Tamuz ● 10am Sisterhood Meeting ● 4pm Grief Support Group	1st of Av, 5786 Rosh Chodesh Av	2nd of Av ● 9am Morning minyan 11 am Torah Class	3rd of Av ● 6pm Kabbalat Shabbat ● 7:21pm Light Candles at: 7:21 PM	4th of Av Shabbat Chazon Parashat Devarim ● 9:30am Shabbat Service ● 8:21pm Shabbat Ends: 8:21 PM
19	20	21	22	23	24	25
5th of Av	6th of Av	7th of Av ● 9:30am Board meeting ● 4pm Grief Support Group	8th of Av Erev Tish'a B'Av	9th of Av Tish'a B'Av ● 9am Morning minyan 11 am Torah Class	10th of Av ● 6pm Kabbalat Shabbat ● 7:17pm Light Candles at: 7:17 PM	11th of Av Shabbat Nachamu Parashat Vaetchanan ● 9:30am Shabbat Service ● 8:16pm Shabbat Ends: 8:16 PM
26	27	28	29	30	31	Aug 1
12th of Av	13th of Av	14th of Av ● 4pm Grief Support Group	15th of Av Tu B'Av	16th of Av ● 9am Morning minyan 11 am Torah Class	17th of Av ● 6pm Kabbalat Shabbat ● 7:12pm Light Candles at: 7:12 PM	18th of Av Parashat Eikev ● 9:30am Shabbat Service ● 8:10pm Shabbat Ends: 8:10 PM



Our logo, created by our member, the late Max Gimpel (z"l), is the Shield of David made into a calligraphic Interpretation of the Hebrew letters, Beit Aleph, which signify the name of our Congregation, BETH EMETH, House of Truth.

Beth Emeth Congregation Board

Co-Presidents	Arnold Becker and Natalie Morrison
Past President	Marilyn Newberg
1st VP	Susan Hersch
2nd VP	Iris Kingma-Johnson
3rd VP	Arthur Bennett
4th VP	Joel Levine
Treasurer	Brad Friedlander
Financial Secretary	Raymond Karam
Recording Secretary	Marlene Friedlander
Corresponding Secretary	Irene Lehrer

Directors

Leah Tarnor
Harvey Zarensky
Marvin Wachs
Gary Cohen

Sisterhood President

Ketzi Toney

All opinions expressed in the Observer are solely those of the contributors and do not necessarily share in the opinions of our Board and Congregants.