

Beth Emeth Observer

BETH EMETH CONGREGATION OF THE WEST VALLEY



Follow us:



Hazzan Lev Ettelson

Spiritual Leader & Director of Education

13702 W. Meeker Blvd., Sun City West, AZ 85375
 office@bethemethaz.org www.bethemethaz.org
 Office hours Mon-Fri - 9 AM - 12 PM (ph) 623-584-7210

Tishrei - Cheshvan 5786

October 2025 2025

In this issue

Break the Fast	2
President's Message	3
From the Hazzan's Study	4
From the Editor	5
1st VP Message/Ritual Committee	6
Judaica Shop/ Treasurer's update	7
Financials	8
Etz Chaim/Yahrzeit Board	9
Biblical Garden	10
Safety and Security	10
Sofer- Torah repair	11
Upcoming Events	12 - 15
Sisterhood	16 - 20
Birthdays/Anniversaries	21
Film Festival	22
Yahrzeits	23
Donations	24 - 25
Advertisement	26
Calendar	27

Erev Yom Kippur Kol Nidre	Wednesday, October 1	5:45 pm
Yom Kippur	Thursday, October 2	9:00 am
Yizkor	Thursday, October 2	11:00 am
Mincha	Thursday, October 2	4:45 pm
Neilah	Thursday, October 2	5:45 pm
Havdalah	Thursday, October 2	6:50 pm
Break the Fast	At the conclusion of Havdalah	7:00 pm
Erev Sukkot	Monday, October 6	5:45 pm
Sukkot 1st Day	Tuesday, October 7	9:00 am
Sukkot 2nd Day	Wednesday, October 8	9:00 am
Shemini Atzeret	Tuesday, October 14	9:00 am
Yizkor Tuesday	Tuesday, October 14	11:00 am
Erev Simchat Torah	Tuesday, October 14	6:30 pm
Simchat Torah	Wednesday, October 15	9:00 am

Shabbat Candle Lighting October 2025



10/3 - 5:52 pm
 10/10 - 5:43 pm
 10/17 - 5:34 pm
 10/24 - 5:26 pm
 10/31 - 5:19 pm

Volume 2025—Number 19



LET'S BREAK THE FAST TOGETHER!



At the end of Yom Kippur services, we invite Members, Nonmembers and Guests to BREAK THE FAST together!

Thursday, October 2, 2025 ~7:00 pm following Havdalah in the Social Hall

Our menu:

Fresh bagels with all the fixings

Egg salad

Veggie quiche

Veggie platter w/hummus

Cheese platter w/crackers

Fresh fruit platter

Quick breads (banana, zucchini, and pumpkin)

Apple cake

Coffee, tea, sodas

Cost is \$18 per person. Payable in cash, check, credit card and Zelle.

Payable to BETH EMETH CONGREGATION

PLEASE RSVP to the Office – 623-584-7210



**FROM THE DESK OF TOM BEHRENDT, PRESIDENT
Beth Emeth Congregation of the West Valley**

On Behalf of the Beth Emeth Congregation Board, a sincere thank you to the generous anonymous donor who agreed to match Yizkor Pledge donations up to \$10,000! We hope that your generosity puts us over the top.

In a separate email from the Board and Treasurer, we will inform you of how much was received.

Thanks to all of the Participants that made our Yom Tovim so beautiful and meaningful! We hope you found meaning in the services and will return for Shabbat services during the year.

Please save the date October 5th at the JCC to honor those taken hostage on October 7, 2023. Pre-Registration is required and carpooling will be available. It is so important that we stand together and show solidarity with the Jewish Community and Israel. See the flier in this issue or call the Office.

Another date to earmark is Sunday, October 19th as we join with other Jewish organizations throughout the Valley to participate in a Jewish Expo. You will find more details in this issue.

The Search Committee has been established to put together a slate of Officers for the Board for 2026 . Please let the Office or Marvin Wachs know if you have interest to serve on the Board and help grow our Congregation!

As always, we welcome back the Snowbirds and hope to see all of you at upcoming events!

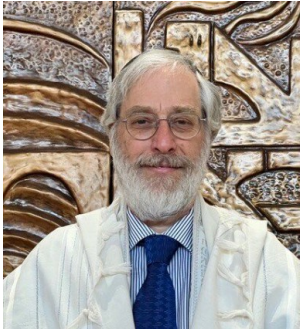
A handwritten signature in blue ink that reads "Tom Behrendt".

Tom.behrendt@bethemethaz.org

Remember to bring nonperishable food for Project Isaiah to Kol Nidre services!!

Reflections on Torah and Tradition

Hazzan Lev Ettelson



"The words of the prophets are written on the subway walls and tenement halls and whispered in the sound of silence." - Paul Simon

The words of our prophets were too often disregarded, especially by those in power. Too many kings of Israel went down a path which diverged from the teachings of the Torah in pursuit of wealth and power. The prophetic voice, forged in solitude and silence (the still small voice), calls the people to care for the poor and vulnerable and return to the Torah whose "ways are pleasant and all her paths, peaceful." (Proverbs 3:17)

I don't know a soul who's not been battered
I don't have a friend who feels at ease
I don't know a dream that's not been shattered
or driven to its knees...
Still, when I think of the road
We're traveling on
I wonder what's gone wrong...

Paul Simon

The dream of The State of Israel was shattered on October 7, 2023. The war (which I pray is over by the time this comes to print) has taken a serious toll on the lives of too many people: the hostages (dead and alive), the Nova Festival attendees, the families in kibbutzim Kfar Aza, Be'eri, Nahal Oz, Magen and the countless widows, orphans and bereaved families in Israel and in Gaza (which has witnessed the death of too many children). The vast majority of citizens of Israel want the war to end, the hostages to come home, the suffering to end and a path forward for all people in the region. Israel has never been so isolated as it is now. As someone who loves the people and the land of Israel, I am deeply troubled by the direction it is heading.

Likewise, in America, a nation built upon lofty aspirations, blood, sweat and tears, there are such deep divisions which threaten the foundations of our democracy. We have seen too many politically motivated assassinations and mass shootings, especially in schools and religious congregations. The erosion of civil discourse is threatening to tear us apart. The ones who suffer the most are those who are socially marginalized and economically vulnerable.

In Pirkei Avot, Rabbi Chanina says, "Pray for the welfare of the government (otherwise) a person would swallow his fellow alive." Yet, Rabban Gamliel says, "beware of rulers for they befriend someone only for their own benefit; they act friendly when it benefits them, but they do not stand by someone in his time of need." The truth lies in the tension between the two.

In the words of the prophet Micah: "You have been told, O mortal, what is good, and what God requires of you: Only to do justice, love goodness, and to walk modestly with your God." I don't know who the leaders are who can show us the way forward. My only hope is in the awakening of the Holy Spark in the heart of all beings. May the One who makes peace in heaven above, bestow peace upon us all.

Reb Lev

From the Editor's desk!

Greetings!

As the festivities of the High Holy Days comes to an end later this month with the celebration of Simchat Torah and we hear the utterance of the word 'B'reshit', "in the beginning".

As the New Year 5786 gets underway, let this be as a new beginning for each of us. If in the past year, you fell short of your goals or getting everything on your 'to-do' list done, let this be the start of doing more, doing better. I try to live by the 2% better each day rule, or at the very least 1%.

Did you attend events in the past year? If not, the new year is the time to attend...the time to participate. There are a lot of events coming up at Beth Emeth or Sisterhood or Hadassah or throughout the Valley! Whatever appeals to you, join in!

Or maybe volunteer! Or become an Usher at services. We can always use an extra set of hands. Just ask.

Whereas I usually post about donating money....and yes financial contributions are always welcomed! As the new year starts, donating your time is just as important.

In December, Sisterhood will host its annual Latke event...I am sure Ketzi has a list of openings for volunteers.

In January, we will be hosting another Film Festival. Irene and her committee can always use help.

In March, Natalie will hostess the Mah Jongg Tournament...she will be happy to teach you how to play.

Or when you shop at Fry's (don't forget to link your card to Beth Emeth Congregation), buy an extra dozen eggs (or 2) and donate them to the Kiddush Committee. Every little bit helps a lot!

We, the Officers and Committee Chairs, will try to say "thank you" more often as we truly appreciate your contributions to making Beth Emeth Congregation of the West Valley a great Jewish Community.

B' Shalom,



Marlene Friedlander, Editor

From your 1st Vice President!

Thank you to all those who sponsored Kiddushim this past year.
The Kiddush Committee looks forward to preparing many more in the coming year.

Immediately following the Havdalah services at the end of Yom Kippur, we will have our Break the Fast in the Social Hall. Cost is \$18 per person. Please contact the Office to attend.

Shalom,
Marilyn Hope
Marasha Tikvah

marilyn.newberg@bethemethaz.org
1stvicepresident@bethemethaz.org

Ritual Committee

We look forward to seeing you at our services throughout the year.
Do you have a special occasion or an upcoming Yahrzeit? Please let me know so that we can arrange for you to have an Aliyah at services.

Want to learn how to dress the Torah or how to open the Ark?
Let me know!

Natalie Morrison

natalie.morrison@bethemethaz.org
3rdvicepresident@bethemethaz.org



Our Judaica Shop

**Do you create a special item that you would like us to sell in our Judaica Shop?
Please contact me for information!!**

**Stop by anytime Monday– Friday 9:00 am—noon! Payments accepted by cash,
Credit card, check or Zelle!**

**Susan Hersch, Judaica Shop Manager
susan.hersch@bethemethaz.org**

Treasurer's Corner - Brad Friedlander, Treasurer

Due to rising costs, we are planning to increase individual dues to \$800 for 2026.

This is subject to approval by the Congregation at the annual meeting. If you have an IRA, please consider using a qualified charitable distribution (QCD). A QCD counts toward your required minimum distribution (RMD) for the year and is not taxable.

Please speak to your financial advisor for details.

You can include other donations besides your dues.

Our Congregation's restricted funds allow you to specify how your donation will be used.

- Biblical Garden: The donation will only be used for the Biblical Garden project. A generous donor matched to \$5,000 in new donations.
- Torah Maintenance: The donation will only be used for the inspection and repair of our Torahs. Repair assessment starts in September.
- Building Repair: Donations will only be used for costs to repair and update our building.

Don't forget to link your Fry's Rewards account to Beth Emeth Congregation. You still get all of your benefits plus a portion of your total grocery receipt comes to us!

Please contact me at treasurer@bethemethaz.org if you have any questions.

B 'shalom,

Treasurer's Financial Update

Our congregation depends on your financial contributions to enable us to provide the religious services and programs you want.

Financial Status

As of Sep 21st, we have had \$216,135.18 in income and \$191,384.53 in expenses.

- ☆ This does not include roughly \$20,000 in unplanned capital expenses.
- ☆ Bathroom repair
- ☆ Air conditioner replacement for both bathrooms, office, and kitchen
- ☆ Painting

Dues

We still have \$5,754 in unpaid membership dues.

We accept payment in multiple forms, shown in order of preference.

- ☆ Zelle payment to treasurer@bethemethaz.org
- ☆ Check
- ☆ Cash
- ☆ Credit card: We pay a 5% fee per transactions, so we only get \$712.50 of a \$750 payment.

Donations

Donations can be earmarked for the three restricted funds that need our attention: Biblical Garden Fund, Torah Maintenance Fund, and Bathroom Repair.

Your Ritual donations for Aliyot, Yahrzeits, and other life-cycle events are a very important part of our income.

B 'shalom,
Brad Friedlander, Treasurer

Etz Chaim—Our Tree of Life

I invite you to become part of the permanent legacy of our Synagogue. Through the end of the year, “leaves” on our Etz Chaim (Tree of Life) in our Lobby are just **\$99 each!**

“Apples” are only **\$150!**

Buy them for yourself or a loved one!

Or commemorating a special occasion! Let’s fill the Tree!

Happy to discuss with you how to place an order.

Tom Behrendt, President
president@bethemethaz.org or
office@bethemethaz.org



Yahrzeit Plaques

We have many Yahrzeit plaque spaces available on our Sanctuary wall.

Yahrzeit plaques can be purchased in memory of someone who has passed away or be reserved for a future use.

Plaques are \$350 each.

Payment by cash, check, credit card or Zelle!

Forms available in the Office.

Please reach out to me for further information.

Arnold “Arnie” Becker, Director
Arnold.becker@bethemethaz.org



Our Biblical Garden

Updates -

The New Year is a great time to make a donation to the beautification of our property.

So far we have received \$11,994.00 in donations and have spent \$6585.00, We thank everyone who has contributed.

Whereas it looks like we have a surplus, we do not have enough to accomplish our design goals.

Please contact us to discuss how your donation will make a difference!

Marilyn Newberg, 1stvicepresident@bethemethaz.org

Arnold Becker, arnold.becker@bethemethaz.org

Beth Emeth Congregation of the West Valley Safety and Security, A Report

Beth Emeth Congregation (BEC) offers a welcoming environment for religious services, classes and special events/programs. Ensuring the safety and security of everyone who enters our doors is of paramount importance.

Our commitment to the physical well-being of our members and guests is accomplished in many ways. Safety and security measures are essential. A secure environment fosters a sense of community, encouraging full participation and involvement. Planning ahead ensures a safe environment.

To enhance the physical security of those who participate in Beth Emeth Congregation activities, an armed security team* is present at religious services and special events. This team of highly trained professionals play a crucial role in maintaining a safe environment for all members and visitors. In addition, bollards* have been installed at our entrance to prevent a motor vehicle intrusion and enhanced Access Control* and CCTV* systems will be installed in the coming months.

Finally, recognizing that external threats and circumstances are not the only conditions which must be addressed under the heading of Safety and Security, an audible alarm system has recently been installed in the building, alerting those present, that should there be a fire or police emergency in the building, that timely action should be taken.

Please address any questions or concerns to my attention.
Arnold.becker@bethemethaz.org

*Funded by US FEMA and administered by the Arizona Department of Homeland Security.

Sofer comes to Sun City West



On September 8th and 9th Sofer S'Tam Ron Sieger, from the Las Vegas area, was at Beth Emeth Congregation of the West Valley to examine each of the congregation's *Torah* scrolls, and to begin repairs. This preliminary evaluation and work was made possible by donations from Sisterhood and other congregants.

Hand written with a quill on parchment, a *Torah* contains the five books of Moses. Traditionally, each *Shabbat*, the Jewish Sabbath, and on Mondays and Thursdays during the weekday prayer services, a section of the *Torah* is read. The reader uses a pointer called a *Yad*, to prevent oils on one's hands from blurring the text or staining the parchment. Great care goes into creating and maintaining a *Torah*. Everything must be natural.

A Sofer is a Hebrew scribe responsible for writing and repairing *Torah* scrolls, and must be a religiously observant Jew. Writing or repairing a *Torah* is a detailed, painstaking process as each letter of each word must be exact and clear. A specific square letter formation called *K'tav Ashurit* is used. A scoring tool made from a thorn, called a *sargel*, is used to keep each line of writing straight, and special ink is used.

Each sheet of parchment with a section of text is called a *yeriah*. *Giddin*, threads made from the sinew from the leg of a kosher animal, are used to sew one *yeriah* to the next. There are over 250 *yeriah* in each *Torah*. Each *yeriah* is checked and rechecked prior to sewing it to the next. Then finally, they are sewn to the wooden rollers called *Atzei Chaim* (trees of life). The process is a labor of love and a holy endeavor.

The word S'Tam (bottom line of Hebrew on Mr. Sieger's cap) is made up of three Hebrew letters, each representing a specific item, the three most important things a Sofer writes. The Hebrew letter Samech (on the right) stands for *Sefer Torah*. The Hebrew letter Tav stands for *Tefillin* (phylacteries, leather boxes containing parchment on which the *Shema* is written). The Hebrew letter Mem stands for *Mezuzah* (meaning door post), which also contains the *Shema*. The *Shema* commands 'these words be a frontlet between thine eyes and upon thine arm,' and to 'attach them to the door post of your home.' The containers used to attach the *Shema* to our door post vary and are works of art. However, the parchment with the hand written *Shema* is the important part. The *Shema* proclaims the Lord is one, the founding principal of Judaism, and it directs us to love the Lord with all our heart, with all our soul, and with all our might.



Ron Sieger
sofersieger.com
310-930-4462

Sunday, October 5, 2025

[10/7 Honor. Unite. Hope | 2025](https://phoenixcjp.regfox.com/107-honor-unite-hope-2025)

<https://phoenixcjp.regfox.com/107-honor-unite-hope-2025>

10/7

Honor. Unite. Hope.

Community Kindness & Resilience Day:

Aged-Based Workshops

2:00 PM - 5:00 PM

Ages 0-5 | Ages 6-10 | Ages 11-13 | Ages
14+

Israeli Shorts Film Festival

3:00 PM - 5:00 PM

Tattooed for Life (30 minutes)

The Dog (15 minutes)

Not in Our School (22 minutes)

Healing Trails (17 minutes)

Exhibits

2:00 PM - 5:00 PM

Wings of Hope

Stories of Survivors

VALLEY OF THE SUN

JEWISH
COMMUNITY
RELATIONS
COUNCIL

ADL

JEWISH
NATIONAL
FUND
USA

ISRAELI
COUNCIL



Center
for Jewish
Philanthropy
of Greater Phoenix
AN LEVINE FOUNDATION PROJECT

bbyo

Hillel
ASU

JEWISH
FAMILY
SERVICE

THE JEWISH
AGENCY
FOR ISRAEL
THE 100

JEWISH
FILM



Sisterhood Paid Up Membership Luncheon

**Become a Sisterhood Member or renew your
membership by October 9th and enjoy lunch with us
In the Sukkah**



**Sunday October
12th
At 12:30pm**

RSVP required 623-584-7210

Short meeting to follow lunch

**Membership forms available on our website bethemethaz.org
or in our foyer**

Hadassah Tikvah West Valley

Please join us for lunch

at

Sakura Sushi Teppan

16525 West Bell Rd

Surprise

on

Monday, October 13, 2025

at

11:30 am



To hold your reservation, please send a check for \$5, made out to Hadassah and mail to Judy Becker along with the form at the bottom of the page. The \$5 will be a donation.

Reservations need to be received by October 8th

Please fill out this form and enclose it with your check for 5 dollars

Name _____

Check number _____

Email _____

and mail to:

Judy Becker

9522 West Willowbrook Dr

Sun City AZ 85373

Questions call (914) 263-5880

JEWISH SURPRISE & THE CJP
INVITE YOU TO JOIN THE

WEST VALLEY JEWISH EXPO

**CELEBRATING JEWISH UNITY,
JEWISH IDENTITY, JEWISH LIFE.**

**SUNDAY, OCT 19
2:00 - 4:00 PM**

**THE COLONNADE BALLROOM
19116 N COLONNADE WAY
SURPRISE, AZ**



**KEYNOTE SPEAKER:
JUDITH RAANAN
FIRST AMERICAN HOSTAGE
FREED FROM GAZA**

**Featuring Surprise Kosher NY
Deli, Baked by Batya, Judica,
Art, Jewelry, & local vendors**

- Klezmer band
- Community leaders
- Security on site

Tickets: JewishSurprise.com/Expo

PARTICIPATING ORGANIZATIONS





Message from the Sisterhood President October 2025

The High Holidays are a time of reflection and introspection. Sukkot is a time of appreciation and connection. This beautiful harvest holiday reminds us of the fragility of life, fosters gratitude for our abundant bounty (our blessings), and connects us to HaShem and to one another.

In addition to pausing to cultivate appreciation, we are commanded to remember our responsibilities to each other, to our animals, and to the land. Judaism is a way of life, directing us to strive for respectful, harmonious, and compassionate communal living. The emphasis is on community. Indeed, the Torah states "Lo Tov," it is not good, referring to being alone.

In the spirit of building community, Sisterhood members recently voted to make the first year of Sisterhood membership free to women who become a new member of the synagogue. Included in Sisterhood membership is membership in Women's League for Conservative Judaism, which opens opportunities for programming, learning and connecting locally, regionally, and internationally with other women on line.

WLCJ Torah Fund supports scholarships to five seminaries, here and abroad, ensuring the continued spiritual leadership of rabbis, cantors, lay-leaders, and Jewish educators. I am happy to report, after expenses we earned \$630 for Torah Fund with our Pesce Concert. Sisterhood also contributed \$1,000 to Beth Emeth's Torah Fund, helping to make it possible to bring a Sofer here to examine our Torah scrolls.

Sisterhood welcomes all our new members! Please join us for our paid-up Sisterhood membership luncheon in the Sukkah, to be held on **October 12th, at 12:30pm**. The lunch is free, RSVP is required.

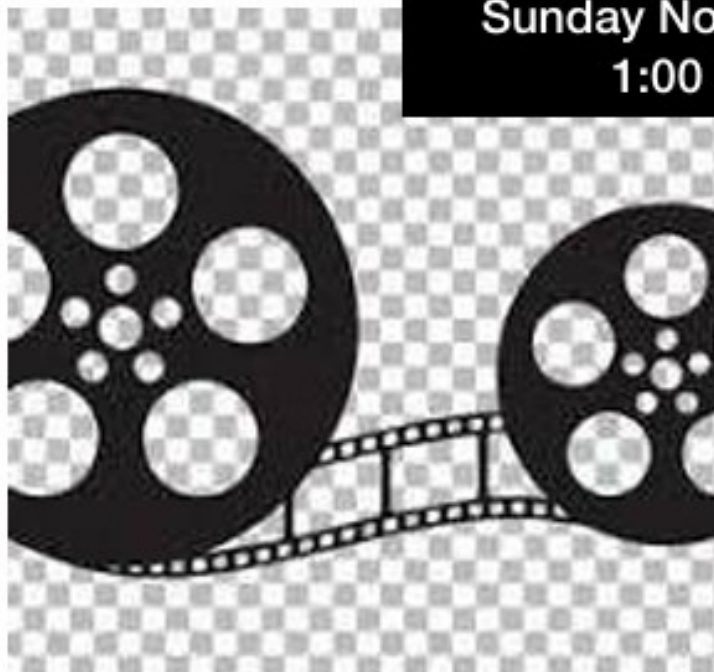
Please note: Our November "Mystery mad lib" program facilitated by author CJ Eaton, (our own Ann Goldfarb), **has been moved to January 18th**. Thank you, Ann! Our **November 16th** program will be the viewing of the film *Frontline Warriors*, followed by discussion facilitated by John Belsher. Thank you, John! This program is free and open to all.

December 21st will be our Sisterhood Latke Feast, which will be open to all. Please save the dates and look for more information to come.

Sisterhood planning meetings are held on the second Tuesday of each month at 10:00am, all are welcome. We would love to hear your ideas! It is so exciting to see Sisterhood growing. We hope you will join us. Come, connect, contribute, learn, make new friends, and have fun. We welcome you with open arms.

L'Shanah Tovah

Join Us
Sunday November 16th, 2025
1:00 pm -3:00 pm



Sisterhood

Beth Emeth Congregation

Is Excited to Host

The viewing of

FRONTLINE WARRIORS

By Aish Ha'am

Discussion following viewing

facilitated by

John Belsher

The film deals with the antisemitism on campuses and the rising violence and hate in this country. In this film you will meet Shabbos Kestenbaum, and hear about his personal experience of antisemitism, the lack of response to what was happening on campus by the administration, and how he chose to respond.

You will also hear from Eden Yadegar a student at Columbia, both of her parents are Iranian.

This film is not political, rather it presents factual, actual footage of events as they were happening.

The program is Free and Open to All

Please RSVP

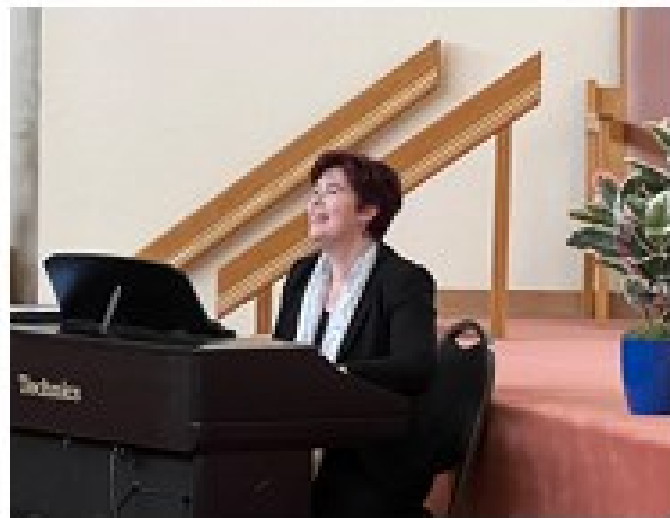
If you are planning to attend.

call 623-584-7210 M-F 9-noon

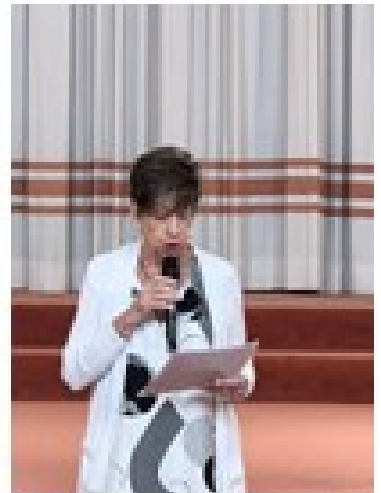
13702 W Meeker Blvd, SCW, AZ 85375

Arizona Rangers will be present

Nicole Pesce Concert A Big Success



Sunday, September 14th, sixty people attend the concert. Attendees included members, non members, individuals from neighboring churches and one young family. Their three children enjoyed front row seats to watch Nicole's hands fly over the keyboard. After our expenses we earned \$630 for Women's League for Conservative Judaism Torah Fund, which provides scholarships to five seminaries here and abroad. Thank you all for your support! The music was fantastic and enjoyed by all. Light refreshments were served following the performance.





To view more photos go to our web site bethemethaz.org

SISTERHOOD



we are Women's League
Engaging, Enriching and Empowering Jewish Women
Women's League for Conservative Judaism

Beth Emeth Congregation of the West Valley
13702 W Meeker Blvd, SCW AZ 85375 623-584-7210 M-F 9:00am - noon

Sisterhood Now Offering Tribute Cards
Minimum donation \$5 per card

Top Two Cards
Are for Donations
To Sisterhood

TRIBUTE CARDS FOR ALL OCCASIONS

MINIMUM DONATION OF
\$5

Cash, Checks to Sisterhood or
Zelle to sisterhoodbec1@gmail.com
Office hours M-F 9-noon 623-584-7210
13702 W Meeker Blvd, SCW AZ 85275

All Other Cards
Are for Donations
To Torah Fund

Buy & Send Your Own Cards
Minimum 5 Cards for \$15

Money from Get Well and In Memoriam cards go directly to Sisterhood.

All other cards go to Women's League's Torah Fund, which provides scholarships to individuals studying to be rabbis & cantors.

Buy & send your own cards
Min. 5 cards for \$15 donation
Make checks payable to
Sisterhood



Barbara Bennett	02-Oct
Paula Markovitz	07-Oct
Andrew Heidecker	09-Oct
Ann Goldfarb/Clapp	12-Oct
Marvin Wachs	14-Oct
Michael Weinberg	15-Oct
Myron Perlmutter	28-Oct



Barry and Claire Maultasch 12- Oct
Michael and Judi Weinberg 19- Oct

**OUR 2026 FILM FESTIVAL IS COMING!!!
SAVE THE DATES - JANUARY 24 -26, 2026
MORE INFORMATION TO FOLLOW!!!**

There are many ways to show your support of the Seventeenth Annual West Valley Jewish Film Festival.
Please consider becoming a sponsor...and thank you!

EXECUTIVE INVESTOR: \$1000.00

Festival EXECUTIVE PRODUCERS will receive four tickets for each show.

EXECUTIVE PRODUCER: \$500.00

Festival EXECUTIVE PRODUCERS will receive two tickets for each show.

PRODUCER: \$400.00

Festival PRODUCERS will receive two tickets for two shows of their choice.

DIRECTOR: \$300.00

Festival DIRECTORS will receive one ticket for each show.

SCREENWRITER: \$200.00

Festival SCREENWRITERS will receive two tickets for choice of show.

ACTOR: \$100.00

Festival ACTORS will receive one ticket for choice of show.

SUPPORTER: (\$)

All Festival supporters will have their name prominently listed in the Festival Program.

YES, I WANT TO BE A SPONSOR TO THE SEVENTEENTH ANNUAL WEST VALLEY JEWISH FILM FESTIVAL:

___ EXECUTIVE INVESTOR (\$1000.00)

___ EXECUTIVE PRODUCER (\$500.00)

___ PRODUCER (\$400.00)

___ DIRECTOR (\$300.00)

___ SCREENWRITER (\$200.00)

___ ACTOR (\$100.00)

___ SUPPORTER (\$)

In order to be acknowledged in the program, donations have to be received by January 15, 2026

NAME _____

ADDRESS _____

CITY/STATE/ZIP _____

PHONE _____ E-MAIL _____

Please make your check payable to Beth Emeth Congregation and mail to:

Jewish Film Festival Committee

Beth Emeth Congregation

13702 West Meeker Boulevard

Sun City West, AZ 85375

For additional information, please call Irene Lehrer (845-430-0982 or 623-584-7210).

We are a 501C3 non-profit organization and is classified as a religious institution under IRS 509(a)(1) and 170 (b)(1)(A)(i). No goods or service have been exchanged for this donation.



*May their memories be blessed.
As We remember them...*



**The following Yahrzeits will be observed during Tishrei and Cheshvan.
Kaddish may be said at Friday evening services (6:00 pm), and Saturday morning
services (9:30 am)**

Date	Hebrew Date	Deceased	Observant	Relationship
3-Oct	Tishrei 11	Sol Becker	Arnie Becker	Father
7-Oct	Tishrei 15	Judge Joseph Goldstein	Elinor Goldstein	Husband
7-Oct	Tishrei 15	Martha Loebman	Arthur Bennett	Mother
8-Oct	Tishrei 16	Morris Cohen	Gary Cohen	Father
11-Oct	Tishrei 19	Julia Hamerschlag	Marty Hamer	Mother
15-Oct	Tishrei 23	Ben Hamerschlag	Marty Hamer	Father
16-Oct	Tishrei 24	Charles Grindstaff	Lael Summer	Son-in-law
16-Oct	Tishrei 24	Gertude Hoffman	Evelyn Dragiff	Mother
18-Oct	Tishrei 26	Sara Kesten	Sandra Shedroff	Aunt
19-Oct	Tishrei 27	Harold Wachs	Marvin Wachs	Father
19-Oct	Tishrei 27	Jake Lessner	Marilyn Newberg	Father-in-law of Rhoda Lessner
19-Oct	Tishrei 27	Abraham Koven	Sheldon Koven	Uncle
19-Oct	Tishrei 27	Freda Epstein	Rosemary Abrami	Mother
21-Oct	Tishrei 29	Leo Rothschild	Jamie Rothschild	Grandpa
21-Oct	Tishrei 29	Rose Lowenthal	Joy Epstein	Mother
24-Oct	Cheshvan 2	Edith Kornheiser	Beverly Merchant	Mother
24-Oct	Cheshvan 2	Myrna Colbert	Jordan Colbert	Wife
25-Oct	Cheshvan 3	Moses Weitzman	Irene Weitzman	husband
25-Oct	Cheshvan 3	Sidney Silverman	Iris Silverman	Brother
26-Oct	Cheshvan 4	Arthur Forster	Paula Forster	Husband
27-Oct	Cheshvan 5	Saul Zimmerman	Arnie Becker	Father-in-law
28-Oct	Cheshvan 6	Benjamin Koshar	Louis Koshar	Father
28-Oct	Cheshvan 6	Max Hoffman	Evelyn Dragiff	Father
30-Oct	Cheshvan 8	Berdie Friedman	Ketzi Toney	Mother

Todah Rabah for your generous support!

<u>High Holiday Donations</u>		<u>Biblical Garden</u>
Tom Behrendt	Howard and Fern Emmerman	Arnold Becker
Arnold Becker	Barry and Claire Maultasch	Marilyn Newberg
Brad and Marlene Friedlander	Loree and Joel Resnick	Paula Forster
Paula Forster	Jerry and Sylvia Levitt	
Melvyn Friedman	Stephen and Rachelle Lederman	
Philip Gillenson	Thomas and Laurie Lalla	Minionaire Donations
Sherry Lapham	<u>Member - General Fund</u>	Minionaires
Beverly Merchant	Saul and Sharon Rothzeit	<u>Break the Fast</u>
Marilyn Newberg	Jordan and Rosie Colbert	Morrie Hesch
Lael Summer	Brad and Marlene Friedlander	<u>Ritual Donations</u>
Evelyn Dragiff	Arthur and Barbara Bennett	Joan Rothfeld
	<u>Yahrzeit Fund</u>	<u>Kiddush Fund</u>
Susan Hinton	Irene Lehrer	Judith Weinberg
Judith Gillis	In memory of Donald Lehrer	
	Joel Levine	<u>Yizkor</u>
Millicent Levy	In memory of Susan Levine	
Arthur and Barbara Bennett	Sheldon Koven	Arnold Becker
	In memory of Samuel Koven	
James and Esther Toney	Sheldon Koven	Irene Lehrer
	In memory of Helen Koven	
Jordan and Rosie Colbert	Sonia Marshall	Susan Faludi
William Kram and Diane Shapiro	In memory of Howard Marshall	
Marvin and Rita Wachs	Bernard Rosen	Launa Winegard and Benjamin Dahukey
Joy and Peter Epstein	In memory of Sam Rosen	
Michael and Carol Madvig	Paula Forster	<u>Nonmember - General Fund</u>
Dov and Suzan Giloni	<u>Donation In-Kind</u>	Adrienne Kirschner
	Brad and Marlene Friedlander	Millicent Levy
	Tom Behrendt	Charles and Marisela Erichsen

Reflecting donations posted 8/21-9/21

5786 Book of Remembrance Donations

Arnold Becker	Tom Behrendt
Brad and Marlene Friedlander	Sally Anne Hall
Sheldon Koven	Irene Lehrer
Carol Loewith	Sonia Marshall
Marilyn Newberg	Gyorgyi Rosenthal
Judith Weinberg	Evelyn Dragiff
Arthur and Barbara Bennett	Myron and Shoshana Perlmutter
Saul and Sharon Rothzeit	Jordan and Rosie Colbert
Leah and Charlie Tarnor	Michael and Carol Madvig
Dov and Suzan Giloni	Barry and Claire Maultasch
Thomas and Laurie Lalla	Paula Forster
Morrie Hesch	Reva Litt
Lael Summer	Beverly Merchant
Barbara Newman	James and Esther Toney
Sheila and Marvin Rand	Marvin and Rita Wachs
Howard and Fern Emmerman	

Grandview Terrace brings new meaning to *Independent Living*

Just steps from their front door, residents have access to a plethora of dining options, a bustling social scene, and a wealth of amenities—all conveniently located under one roof.

In addition, residents receive membership to Sun City West's state-of-the-art recreational center and social amenities, including championship golf courses and dozens of charter clubs. It's another way that **Grandview Terrace** makes it easy to live a healthy and happy life.

Explore Your Options with Confidence

Assess the financial compatibility of **Grandview Terrace** with your retirement plan. Try our simple calculator for an instant, obligation-free estimate.



Call our sales office
at (623) 975-8014
to schedule a tour!

SunHealthCommunities.org/grandview



Camino del Sol

FUNERAL CHAPEL & CREMATION CENTER

At Camino del Sol Funeral Chapel and Cremation Center, it is our mission to meet every need of the families we serve. Family-owned and operated, Camino del Sol is proud to serve the surrounding communities since 1989. You can count on us today, and for generations to come!

(623) 584-6299

www.caminodelsol.com



October 2025

Tishrei - Cheshvan 5786

SUN 28 (6)	MON 29 (7)	TUE 30 (8)	WED Oct 1(9)	THU 2 (10)	FRI 3 (11)	SAT 4 (12)
		<ul style="list-style-type: none"> 4pm Grief Support Group 	Erev Yom Kippur <ul style="list-style-type: none"> 5:55pm Candle lighting 	Yom Kippur <ul style="list-style-type: none"> 9am Morning minyan 11am Torah Class - Reb Lev 6:57pm Havdalah (45 min) 	<ul style="list-style-type: none"> 5:52pm Candle lighting 6pm Friday Night Service 	Parashat Ha'azinu <ul style="list-style-type: none"> 9:30am Shabbat Service 6:54pm Havdalah (45 min)
5 (13)	6 (14)	7 (15)	8 (16)	9 (17)	10 (18)	11 (19)
	Erev Sukkot <ul style="list-style-type: none"> 5:48pm Candle lighting 	Sukkot I <ul style="list-style-type: none"> 4pm Grief Support Group 6:50pm Candle lighting 	Sukkot II <ul style="list-style-type: none"> 6:49pm Havdalah (45 min) 	Sukkot III (CH"M) <ul style="list-style-type: none"> 9am Morning minyan 11am Torah Class - Reb Lev 	Sukkot IV (CH"M) <ul style="list-style-type: none"> 5:43pm Candle lighting 6pm Friday Night Service 	Sukkot V (CH"M) <ul style="list-style-type: none"> 9:30am Shabbat Service 6:45pm Havdalah (45 min)
12 (20)	13 (21)	14 (22)	15 (23)	16 (24)	17 (25)	18 (26)
Sukkot VI (CH"M)	Sukkot VII (Hoshana Raba) <ul style="list-style-type: none"> 5:39pm Candle lighting 	Shmini Atzeret <ul style="list-style-type: none"> 4pm Grief Support Group 6:41pm Candle lighting 	Simchat Torah <ul style="list-style-type: none"> 6:40pm Havdalah (45 min) 	<ul style="list-style-type: none"> 9am Morning minyan 11am Torah Class - Reb Lev 	<ul style="list-style-type: none"> 5:34pm Candle lighting 6pm Friday Night Service 	Mevarchim Chodesh Cheshva Parashat Bereshit <ul style="list-style-type: none"> 9:30am Shabbat Service 12pm Birthday Kiddush 6:37pm Havdalah (45 min)
19 (27)	20 (28)	21 (29)	22 (30)	23 (1)	24 (2)	25 (3)
		<ul style="list-style-type: none"> 9:30am Board meeting 4pm Grief Support Group 	Rosh Chodesh Cheshvan	Rosh Chodesh Cheshvan <ul style="list-style-type: none"> 9am Morning minyan 11am Torah Class - Reb Lev 	<ul style="list-style-type: none"> 5:26pm Candle lighting 6pm Friday Night Service 	Parashat Noach <ul style="list-style-type: none"> 9:30am Shabbat Service 6:29pm Havdalah (45 min)
26 (4)	27 (5)	28 (6)	29 (7)	30 (8)	31 (9)	Nov 1(10)
		<ul style="list-style-type: none"> 4pm Grief Support Group 		<ul style="list-style-type: none"> 9am Morning minyan 11am Torah Class - Reb Lev 	<ul style="list-style-type: none"> 5:19pm Candle lighting 6pm Friday Night Service 	Parashat Lech-Lecha <ul style="list-style-type: none"> 9:30am Shabbat Service 6:22pm Havdalah (45 min)



Our logo, created by our member, the late Max Gimpel (z"l), is the Shield of David made into a calligraphic Interpretation of the Hebrew letters, Beit Aleph, which signify the name of our Congregation, BETH EMETH, House of Truth.

Beth Emeth Congregation Board

President	Tom Behrendt
1st VP	Marilyn Newberg
3rd VP	Natalie Morrison
4th VP	Jordan Colbert
Treasurer	Brad Friedlander
Financial Secretary	Susan Hersch
Recording Secretary	Marlene Friedlander
Corresponding Secretary	Irene Lehrer

Directors

Arnold Becker
Arthur Bennett
Leah Tarnor
Harvey Zarensky
Marvin Wachs

Sisterhood President

Ketzi Toney