

Beth Emeth Observer

BETH EMETH CONGREGATION OF THE WEST VALLEY



Follow us:



Hazzan Lev Ettelson

Spiritual Leader & Director of Education

13702 W. Meeker Blvd., Sun City West, AZ 85375

office@bethemethaz.org www.bethemethaz.org

Office hours Mon-Fri - 9 AM - 12 PM (ph) 623-584-7210

Av - Elul 5785

August 2025



Annual Membership Drive Open House and

Ice Cream Social

Sunday August 24th 1:00 pm – 4:00 pm

All are welcome!

**Bring your friends who are looking to join us!
Meet your Board Members! Learn about activities!
Enjoy some ice cream!**



**High Holiday tickets will be available for
purchase and pickup!**

In this issue

High Holiday Services	2
President's Message	3
From the Hazzan's Study	4
From the Editor	5
High Holiday related	6 - 8
Jewish News Contest	9
1st VP Message	10
Ritual Committee	10
Judaica Shop	11
Treasurer's update/Financials	11-12
Etz Chaim/Yahrzeit Board	13
Biblical Garden	14
Birthdays/Anniversaries	15
Sisterhood	16-23
Advertisement	24
Yahrzeits	25
Donations	26
Calendar	27

Shabbat Candle Lighting August 2025



**8/1 — 7:11 pm
8/8 — 7:04 pm
8/15 — 6:57 pm
8/22 — 6:49 pm
8/29 - 6:40 pm**

Volume 2025—Number 17

Beth Emeth Congregation of the West Valley

Invites you to worship with us !

High Holidays 5786

Selichot Night	Saturday, September 13	7:30 pm
Erev Rosh Hashanah	Monday, September 22	5:30 pm
Rosh Hashanah 1st Day	Tuesday, September 23	9:00 am
Erev Rosh Hashanah 2nd Night	Tuesday, September 23	6:00 pm
Rosh Hashanah 2nd Day	Wednesday, September 24	9:00 am
Shabbat Shuva	Saturday, September 27	9:30 am
Erev Yom Kippur ~ Kol Nidre	Wednesday, October 1	5:45 pm
Yom Kippur	Thursday, October 2	9:00 am
Yizkor	Thursday, October 2	11:00 am
Mincha	Thursday, October 2	4:45 pm
Neilah	Thursday, October 2	5:45 pm
Havdalah	Thursday, October 2	6:50 pm
Erev Sukkot	Monday, October 6	5:45 pm
Sukkot 1st Day	Tuesday, October 7	9:00 am
Sukkot 2nd Day	Wednesday, October 8	9:00 am
Shemini Atzeret	Tuesday, October 14	9:00 am
Yizkor Tuesday	Tuesday, October 14	11:00 am
Erev Simchat Torah	Tuesday, October 14	6:30 pm
Simchat Torah Wednesday	Wednesday, October 15	9:00 am

Baal Koreh - Tony Minkoff

Please note: Yizkor times are approximate



**FROM THE DESK OF TOM BEHRENDT, PRESIDENT
Beth Emeth Congregation of the West Valley**

Shalom!

I was remiss in my last article in not thanking Marilyn Newberg for being the driving force on bringing the Biblical garden back to life in Memory of her Sister, Rhoda Lessner. Thank you Marilyn for spearheading this endeavor. Thank you also to Arnie Becker for getting the work underway!

Please bring a friend with you to our Open House on August 24th to showcase our Building, Spiritual Leader, Programs, and Membership opportunities. The Synagogue needs you and you need the Synagogue.

The security of Beth Emeth is constantly being upgraded. Thanks to Arnie Becker and his team. The concrete pillars in front of the building will help ensure that the building is safe from vehicle attack. The surveillance system is being upgraded and will further protect the building and us. The new carpeted entrance was the gift of a congregant .

High Holiday tickets will be available at the Open House and available for **Members in good standing** , Tickets for non-members will be available with options to purchase . The Beth Emeth Board looks forward to greeting you at the Open House and throughout the year at our Services and Programs

Sisterhood will be bringing the marvelous piano virtuoso Nicole Pesce back to Beth Emeth Congregation on September 14th!! Details in this issue!
Be sure to look through this issue of the Observer for upcoming events along with High Holiday information.

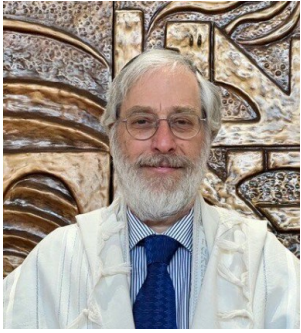
We appreciate each and every donation that we receive, no matter how small. Please look through this issue for donation opportunities or contact me to discuss making special contributions.

A handwritten signature in dark ink, appearing to read "Tom Behrendt".

Tom.behrendt@bethemethaz.org

Reflections on Torah and Tradition

Hazzan Lev Ettelson



For the past several years, I've been looking at the Torah through the lens of human growth and development: from the birth (creation) of Adam to the death of Moses and the process of individuation which unfolds along the way. There is a tradition of our Sages that we each have a letter in the Torah. If we look carefully, we can find ourselves in these timeless stories. In his book, *The Hero With a Thousand Faces*, Joseph Campbell presents the essence of all mythology or the monomyth as a hero/ine venturing "forth from the world of common day into a region of supernatural wonder: fabulous forces are there encountered and a decisive victory is won: the hero comes back from this mysterious adventure with the power to bestow boons on his fellow man."

We begin life in our mother's womb, which can be compared to the Garden of Eden where all of our needs are met. This idyllic state may continue after birth (depending on the environment) for several months or even years, but there is the inevitable conflict and exile which is repeated countless times in the Torah, manifesting as sibling rivalry, tribal conflict, warfare and enslavement. Leonard Cohen once wrote, "You who must leave everything that you cannot control. It begins with your family, but soon it comes around to your soul."

In the archetypal redemption from exile, Moses, Aaron and Miriam, embody a form of leadership that is gifted with vision, while empowering others to realize their true nature and highest potential. The Torah which we received at Sinai presents us with a view of life motivated by love and the pursuit of justice. The purpose of the mitzvot is to bring that light of the encounter at Sinai into our daily interactions and relationships.

Sometimes, however, that light becomes blocked or distorted. On Tisha B'Av, we mourn the destruction of the Temple which is reflected in the brokenness of the world. The Talmud teaches us that the cause of the destruction of the first Temple was hatred. The second Temple was destroyed as a result of the corruption of the pursuit of status and power. The roots of the Ninth of Av are found in the story of the Twelve Spies (Numbers 13:1-33) and the branches extend throughout Jewish history encompassing The Crusades, The Inquisition and The Holocaust.

These times in which we live are fraught with uncertainty and fear; anger and hatred. We find ourselves living on a razor's edge where so much hangs in the balance. In *The Lord of the Rings*, Frodo Baggins is faced with an impossible task upon which the fate of the entire world hangs. "I wish it need not have happened in my time," to which Gandalf replies, "So do I, and so do all who live to see such times. But that is not for them to decide. All we have to decide is what to do with the time that is given us".

Every student of history knows that in every era, humanity is faced with tremendous challenges. The question is, can we face those challenges together, with love, awareness, courage, grace and humor? Can we encourage one another in fellowship and provide mentorship to younger generations who are hungry for understanding and wisdom? The Holy Ark contained the broken tablets alongside the whole ones. This Tisha B'Av we will once again allow ourselves to experience the brokenness of the world and then, as the day progresses, to feel the yearning and the promise for healing and wholeness. As the Kotzker Rebbe once said, "There is nothing so whole as a broken heart."

Reb Lev

From the Editor's desk!

Greetings!

...and just like that our thoughts turn from Summer to the High Holidays. Snowbirds will be returning, and even though temperatures are still hovering in the low 100s, . vacations are becoming a distant memory. The next 7 weeks to the High Holidays will go fleeting by.

There is a lot of activity going on at Beth Emeth Congregation, it never stops! The Ladies Room has been renovated, the halls repainted, the Biblical Garden irrigation system has been fixed ongoing updates to Security and the Ritual Committee is busy preparing for all of the upcoming High Holiday services.

The Board and others are getting ready for our **Annual Open House and Ice Cream Social on Sunday, August 24th from 1:00 pm - 4:00 pm**. If you know of anyone considering joining a synagogue...bring them!

Over the next few weeks you will be called upon to dig deep into your pockets to donate to Beth Emeth Congregation. Many of the opportunities to donate have fliers in this issue. Others will present themselves during the High Holidays.

I hope we (the Board, the Officers, the Committee chairs) at Beth Emeth can count on your support now and throughout the upcoming New Year. The donation amounts are as little as \$18 to include your name in the High Holiday greeting card, or as great as paying your annual dues in full. Or you can always make a contribution to anyone of our Restricted Funds,

Every donation is appreciated.

I continue to say, "it takes a village" to keep our doors open.

Do you have an area of expertise that might be beneficial to the Congregation?

Maybe to be a Greeter for Friday night or Shabbat services?

Let us know.

Our Congregation is only as successful as you make it!

B' Shalom,



Marlene Friedlander, Editor

Questions or comments on this issue? Send them to: editor@bethemethaz.org

The Observer is always looking for your tax deductible donations to help defray the cost of printing ! Thank you in advance.



Beth Emeth Congregation of the West Valley
5786 High Holiday Greeting Card

————→ **We need your name included!** ←————

We will be sending out a High Holiday Greeting Card to all our
Congregation members!

For a donation of \$18 you can have your name included to
wish everyone a Happy Holiday!

Please make your check for \$18 payable to:

Beth Emeth Congregation

Send via mail or bring to:

13702 W Meeker Blvd, Sun City West, AZ 85375

Also payable via credit card or Zelle.

Call the office 623-584-7210 for credit card

treasurer@bethemethaz.org for Zelle payment

Office hours are Monday – Friday 9:00 am - noon

Deadline is September 15th



"BOOK OF REMEMBRANCE"

May their names be remembered - L'Dor Vador

Dear Fellow Congregants,

During the High Holidays, Beth Emeth Congregation publishes a **"Book of Remembrance"**. This book commemorates the lives of those that we have loved and who have passed on. There will be a special page dedicated to the Six Million Jews who perished in the Holocaust as well as the recent victims of terrorism. In addition to honoring our loved ones, the "Book of Remembrance" is also a fundraiser for our Congregation.

List the names as you want them to appear in the Book of Remembrance. **Do not use the term REPEAT.** Please bring or mail this completed form with your check payment to the Beth Emeth office **by September 22nd, 2025.**

Paying by Zelle - information is below.

Thank you for your continuing support!

Irene Lehrer, Corresponding Secretary

Questions? Call me at 623-505-3103 or 845-430-0982

THIS FORM MUST BE COMPLETE & CLEARLY PRINTED

My (Our) Name as it is to appear

IN LOVING MEMORY OF

Also add my/our name(s) to the Special Memorial page for the 6 million Jews and Victims of Terrorism. (\$18.00) To add more names use separate paper.

Full Page	\$136.00	_____
Half Page	\$ 72.00	_____
1/4 Page	\$ 36.00	_____

Special Page—6 Million Jews & Victims of Terrorism \$ 18.00 _____

Grand Total \$ _____

New List

My (Our Name) _____

Phone number _____ Date: _____

Payable by check to: Beth Emeth Congregation or pay by Zelle (treasurer@bethemethaz.org)
13702 W Meeker Blvd., Sun City West, AZ 85375 623-584-7210

Lulav and Etrog Sets for Sukkot



If you are interested in having your own **Lulav and Etrog set** for this Sukkot, please let us know.

Each set consists of an Israeli Etrog, Lulav (palm branch) with its palm holder, Hadassim (myrtle branches), and Aravot (willow branches).

There is a basic guide that lists all the Brachot (blessings) and Halachot (laws) of the four species.

Each set is separately packed with the Lulav assembled in the pouch.

Pricing:

Regular set - \$38.45 Check or Zelle(treasurer@bethemethaz.org)

Regular set - \$40.40 Credit card

Prime set (upgraded) - \$43.45 Check or Zelle

Prime set (upgraded) - \$ 45.65 Credit card

Deadline for ordering is Wednesday, September 10.

**Contact the office to order or Susan Hersch in the Judaica Shop.
623-584-7210 or susan.hersch@bethemethaz.org**

Please make checks payable to: Beth Emeth Congregation

Vote for Beth Emeth in the Jewish News 2025 Readers' Choice Contest!

We are in 2 Categories

CTRL+CLICK to get to the Welcome page! Then choose **Religious & Community Organizations**



[Vote now - Readers' Choice Contest](#)

Welcome to the Readers' Choice Contest

Welcome to the highlight of the year - the Jewish News Readers' Choice Contest. We're giving you the red carpet for you, our discerning readers, to help us celebrate the best of the West Valley. From your favorite local eateries to the most reliable service providers, we're recognizing the places and faces that make our community shine.

Your voice matters, and your vote makes a difference. So dive into our contest, vote for your favorites, and let's discover together who truly stands out in our vibrant community.

Get started

Browse by category

- Introduction
- Education & Child Care
- Entertainment & Activities
- Food & Dining
- Health & Wellness
- Home & Garden
- Lifestyle
- Professional Services
- Religious & Community Organizations**

After you vote for Beth Emeth Congregation, click **NEXT** at the bottom of the screen and click to the page where you put in your name and Submit your votes.

Help make us a favorite in the West Valley!

From your 1st Vice President!

Ask and you shall receive.

I know we ask for help or donations of food, help with setup and cleanup and I know that our members will step up. Extremely grateful for your continued support.

Don't forget that if you have a special milestone coming up, we would love to make it extra special with helping to arrange a Sponsored Kiddush!

Shalom,
Marilyn Hope
Marasha Tikvah

marilyn.newberg@bethemethaz.org
1stvicepresident@bethemethaz.org

Ritual Committee

Please help us fill the seats at services to be able to reach a Minyan so that those who need to, can say Kaddish.

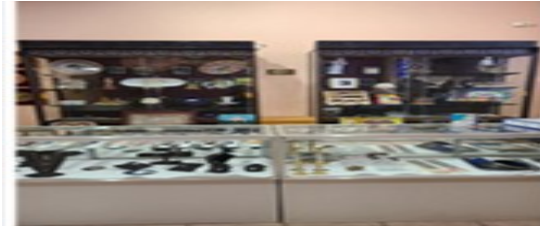
Ticket information for the High Holidays will be coming at the beginning of August. Watch for updates.

Reb Lev is also available if you wish to re-chant your Bar/Bat Mitzvah Haftarah or learn to chant Torah or a Haftarah portion.

I look forward to greeting each of you at services!

Natalie Morrison

natalie.morrison@bethemethaz.org
3rdvicepresident@bethemethaz.org



**Greetings from out JUDAICA SHOP!
Let us help you get ready for the High Holidays!**

Lulav and Etrog sets are now available to order - look for the flier in this issue!

**Stop by anytime Monday– Friday 9:00 am—noon!
Payments accepted by cash,
Credit card, check or Zelle!**

**Susan Hersch, Judaica Shop Manager
susan.hersch@bethemethaz.org**

Treasurer's Corner - Brad Friedlander, Treasurer

Due to rising costs, we are planning to increase individual dues to \$800 for 2026.

This is subject to approval by the Congregation at the annual meeting. If you have an IRA, please consider using a qualified charitable distribution (QCD). A QCD counts toward your required minimum distribution (RMD) for the year and is not taxable. Please speak to your financial advisor for details.

Reminder - Beth Emeth Congregation will no longer accept payments that combine money for Sisterhood and the Congregation.

- ☆ This includes dues, events, and donations.
- ☆ Sisterhood will no longer accept credit card payments.
- ☆ The Congregation Zelle account (treasurer@bethemethaz.org) cannot be used for payments to Sisterhood.

Questions about Sisterhood payments should be sent to Sisterhood@bethemethaz.org or Ketzi.Toney@bethemethaz.org

Beth Emeth Congregation accepts payments and donations via checks, Zelle, cash, and credit cards. Using credit cards cost us 5% of the amount.

Please send Zelle payments to: Treasurer@bethemethaz.org.

If you have questions, please email me at treasurer@bethemethaz.org.

Treasurer's Financial Update

Our congregation depends on your financial contributions to enable us to provide the religious services and programs you want. At the Congregation Membership Meeting in January, we approved a budget with some important sources of revenue: Membership (Dues), Fund Raising, and Ritual.

Financial Status

As of July 15th, we have \$182,830.87 in income and \$138,550.15 in expenses.

Dues

We request payment of any unpaid dues as soon as possible.

☆ At present, we have a shortfall of \$19,810 in membership dues.

☆ To those who have already paid your dues, Todah!

☆ For those who haven't, please make a concerted effort to help us meet our budget.

☆ **Note: High Holiday tickets are only available to members in good standing.**

Payment Methods

We accept payment in multiple forms, shown in order of preference.

☆ Zelle payment to treasurer@bethemethaz.org

☆ Check

☆ Cash

☆ Credit card: We pay a 5% fee for all credit card transactions, so we only receive \$712.50 of a \$750 payment.

Fund Raising

Our three major fundraising events did not meet the budgeted income of \$16,400.

Film Festival netted over \$7,000 and Mah Jongg tournament netted over \$1,000.

Casino Night has been delayed until next year.

Your support for these events has been a great help in meeting our budgeted goals.

Donations

Donations can be earmarked for the three restricted funds that need our attention.

☆ Biblical Garden Fund. A generous donor will match the first \$5,000 in new donations.

☆ Torah Maintenance Fund

☆ Bathroom Repair

Your Ritual donations for Aliyot, Yahrzeits, and other life-cycle events are an important part of our income.

Don't forget to link your Fry's Rewards number to Beth Emeth Congregation!!

B 'shalom,

Brad Friedlander, Treasurer

Etz Chaim—Our Tree of Life

I invite you to become part of the permanent legacy of our Synagogue. Through the end of the year, “leaves” on our Etz Chaim (Tree of Life) in our Lobby are just **\$99 each!**

“Apples” are only **\$150!**

Buy them for yourself or a loved one!

Or commemorating a special occasion! Let’s fill the Tree!

Happy to discuss with you how to place an order.

Tom Behrendt, President
president@bethemethaz.org or
office@bethemethaz.org



Yahrzeit Plaques

We have many Yahrzeit plaque spaces available on our Sanctuary wall.

Yahrzeit plaques can be purchased in memory of someone who has passed away or be reserved for a future use.

Plaques are \$350 each.

Payment by cash, check, credit card or Zelle!

Please reach out to me for further information.

Arnold “Arnie” Becker, Director
Arnold.becker@bethemethaz.org



Our Biblical Garden

Updates - Cleaning, trimming and fertilization is done!! The irrigation system has been repaired. However, we now have barely enough **to continue**.

A generous Anonymous congregant has stepped up to match all donations up to \$5000. So far we have raised \$3000 towards the \$5000. Overall, we have received over **\$8500** in donations to date. But we still need your help.

So now is a great time to make a donation to the beautification of our property.

What do they say and how am I supposed to respond? Rosemary Abrami

If a person does something special (e.g. after being called up for an Aliyah i.e. to say the blessing over the Torah) people often say to that person “yishar kocha-cha” or, in the Yiddish form “yasher ko-ach”.

There is a Talmudic commentary (not surprised, are you?) of why and how this came to be expected (has to do with Moses breaking the first set of Tablets) but that’s not part of this little article - look it up for yourself in the library or online.

It’s a form of congratulation and doesn’t need to be given during a service - it might be for any worthy act, like helping someone in trouble or donating an absolutely enormous sum of money to the congregational coffers!

What do those words mean? Literally they translate as “May your strength be made straight”. The correct response to someone who has wished you is “baruch tihiyeh” which means “May you be blessed”.

If the person who did the special action is a female, the expression is “yishar kochach” and if the person offering the wish is female the correct response is “baruch tihiyee”.

The changes revolve around grammar in the Hebrew language and there’s no need to go into details here.

Maybe you knew all this already or maybe you’ve just said it without knowing why - now you do!



Dov Giloni	8/7
Beverly Merchant	8/9
Irene Weitzman	8/10
Charlie Tarnor	8/16
Louis Koshar	8/19
Raymond Karam	8/26
Bradley Davidson	8/28
Sharon Rothzeid	8/29
Barbara Newman	8/30



Lee and Sandra Shedroff	8/4
Marin Hamer	8/10
James and Ketzi Toney	8/11
Mark and Madelaine Friedman	8/17



As an affiliate of Women's League for Conservative Judaism, Sisterhood's calendar year runs from July 1st through June 30th. We hope you will join us for the exciting new year ahead! The new Sisterhood Membership Forms for 2025-2026 are readily available. Please be sure to fill in all the information as we have added additional line items: emergency contact information/numbers and permission to list your contact information in a Sisterhood Directory. The directory will be released to Sisterhood members only. Please indicate if you choose not to be listed. Forms must accompany payment even if you had been a member for 2024-25.

We started off our year with a relaxing fun filled afternoon of **Yiddish Bingo**. A Big Thank You goes out to Bonnie Hochberg for sharing the game boards she created with us! Over forty people attended. Everyone enjoyed playing, schmoozing and noshing.



Sunday August 17th, from 2:00 pm-4:00 pm, be sure to register now for our **Challah Bake**. Cost is \$18 for members and \$20 for non-members. Just in time for Rosh Hashanah you will learn 5 different ways to shape a round Challah, as well as braiding with four and six strands of dough to form a traditional Challah. Attendees will take home a challah to bake and a booklet with the recipe and diagrams.

September 14th, at 1:00 pm we will have **Nicole Pesce** in concert performing for us "A Walk Down Broadway." Tickets are \$20 and proceeds go to support the Torah Fund of Women's League for Conservative Judaism and Sisterhood programming. Torah Fund provides scholarships to individuals studying to become Rabbis and Cantors, ensuring continued spiritual leadership at home and abroad. Tickets are now on sale. Please support this important fund raiser.



October 12th Sisterhood will enjoy **lunch in the Sukkah** at 12:30pm. **November 16th** from 1:00-3:00pm will be **Mystery & Charcuterie** a unique program facilitated by Sisterhood member and author, Ann Goldfarb. **December 21st** Sisterhood will host our **Chanukah Latke Feast**, start time TBD. Look for information on cost for these events coming soon.

Please know we will no longer be accepting credit card payment for events. **Checks must be made payable to Sisterhood!** You may pay by cash or use Zelle to our account at **sisterhoodbec1@gmail.com**. Please be sure to note that this is a different Zelle address than to the Congregation. Registration forms must be completed and submitted with all transactions. Thank you for helping us streamline our payments/records.

Sisterhood is a way to connect with other Jewish women and also with the amazing heritage that is ours. Sisterhood is about learning and growing together, building both friendship and community. Now more than ever, Let's stand together.

Ketzi Toney, Sisterhood President



SISTERHOOD MEMBERSHIP FORM

JULY 2025 - JUNE 2026

Congregation Member \$36 per year

Non Members \$46 per year

Includes membership in Women's League of Conservative Judaism

Become a Beth Emeth Member - first year of Sisterhood Membership is Free!

Please complete and submit with your payment
Checks Payable to **Sisterhood** Beth Emeth Congregation

Name _____ DOB _____

Address _____

City _____ Zip Code _____

Cell Phone # _____ Home Phone _____

Email _____ Anniversary Date _____

Emergency Contact _____

Relationship _____ Phone _____

☐ **Yes you may list my information on a Sisterhood directory** ☐ **No please do not list**

Volunteer tasks I am able to help with check all that apply: ☐ send cards

☐ planning organizing ☐ kitchen food prep ☐ set up ☐ clean up

☐ phone calls ☐ driving car pool ☐ leading an activity Please Specify

Types of Programs you enjoy attending _____



DON'T MISS



Beth Emeth Congregation
13702 W Meeker Blvd. SCW, AZ
Office hours 9:00am - noon M-F



Thank You Nicole!



e are Women's League

Engaging, Enriching and Empowering Jewish Women.
Women's League for Conservative Judaism

Torah Fund provides scholarships to individuals studying to become Rabbis & Cantors, ensuring continued spiritual leadership at home and abroad.

Join Us For
A Walk Down Broadway

September 14, 2025

1:00pm

Tickets \$20 each

**Please Support Our
Major Fund Raiser**

Proceeds fund
Sisterhood programming &
Women's League

Torah Fund

**Make checks payable to
Sisterhood**



Beth Emeth Congregation
13702 W Meeker Blvd. SCW, AZ
Office hours 9:00am - noon M-F



We are Women's League
Engaging, Enriching and Empowering Jewish Women
Women's League for Conservative Judaism

Nicole Pesce Concert

Join Us For A Walk Down Broadway

Sept 14, 2025 1:00pm Ticket cost \$ 20

Ticket Purchase Transaction Form

Please submit with ticket pick up

Name _____ Cell Phone _____

Address _____

City _____ Zip _____ Number of tickets _____

Payment type _____ Email address _____

**Thank you for Purchasing Tickets to support this
major fund raiser!**

Proceeds go to Women's League for Conservative Judaism

Torah Fund,

and to Sisterhood to help offset cost for programs.



Join Us and learn braiding with 3, 4, & 6 strands, and several ways to create round challot for Rosh Hashanah



Sunday August 17th
2:00 - 4:00 pm

Cost \$18 for members \$20 Non Members

Cash, *Checks payable to Sisterhood* or
Zelle to sisterhoodbec1@gmail.com

(Zelle payments also require form sent in or dropped off)
Completed form with Payment reserves your space

Name _____ Cell Phone _____

Address _____

City _____ Zip _____ payment type _____

Email Mail _____

SISTERHOOD

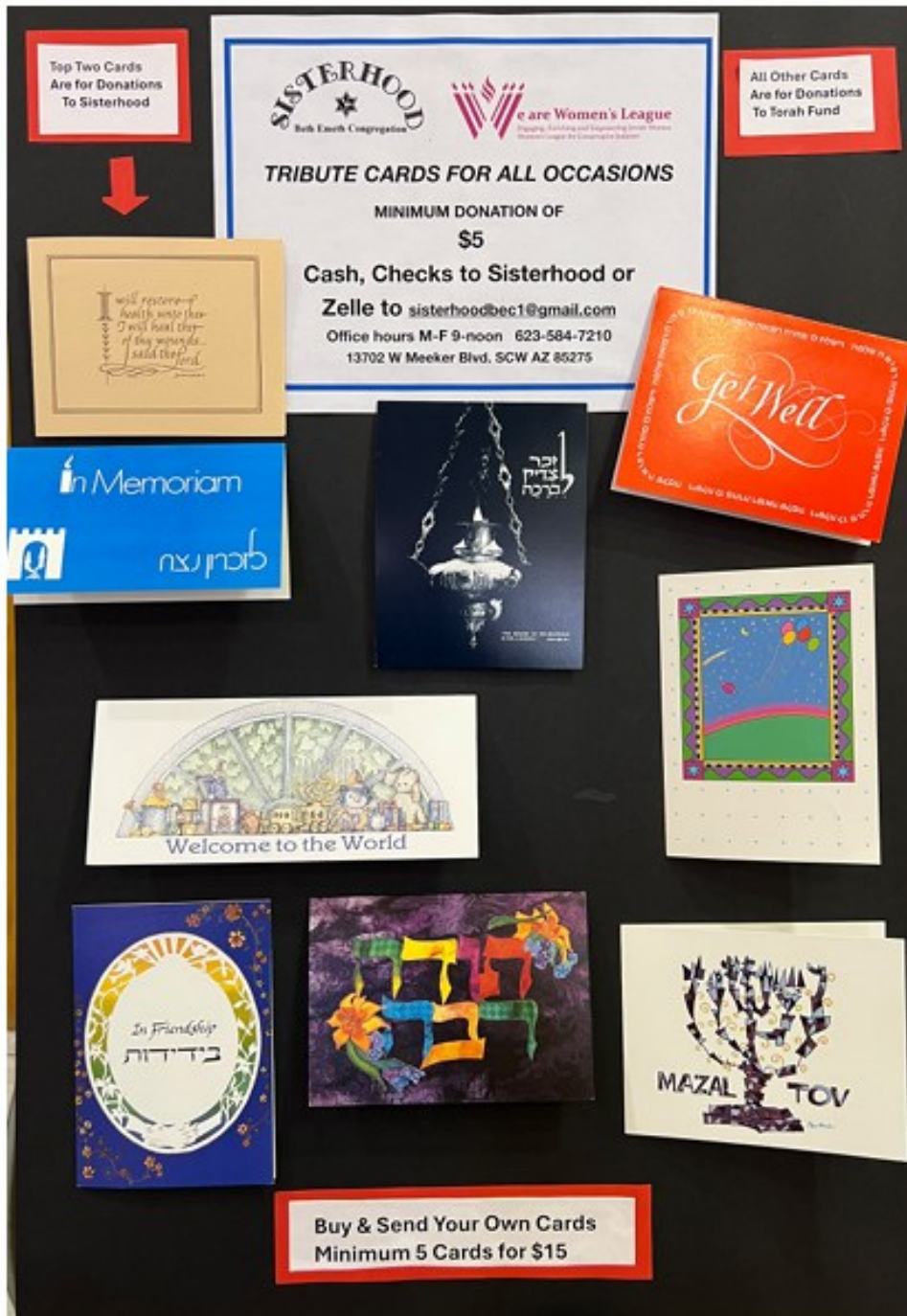


We are Women's League

Engaging, Enriching and Empowering Jewish Women
Women's League for Conservative Judaism

Beth Emeth Congregation of the West Valley
13702 W Meeker Blvd, SCW AZ 85375 623-584-7210 M-F 9:00am - noon

Sisterhood Now Offering Tribute Cards Minimum donation \$5 per card



Money from Get Well and In Memoriam cards go directly to Sisterhood.

All other cards go to Women's League's Torah Fund, which provides scholarships to individuals studying to be rabbis & cantors.

Buy & send your own cards
Min. 5 cards for \$15 donation
Make checks payable to **Sisterhood**



B	I	N	G	O
Oy Vey	Mazel	Gelt	Bris	Shmaltz
Shmatte	Shivah	Chasid	Frum	Shmo
Shmeer	Fress	Sheytl	Shiksa	Boychoick
Shmutz	Shtunk	Mench	G'Vault	Chutzpa

Sunday July 20, 2025 Sisterhood members and guests enjoyed Yiddish Bingo.

It was an afternoon of socializing, good food, and fun! Forty-seven people attended. A good time was had by all. A big thank you to Bonnie Hochberg who made the game and shared it with us. Our appreciation goes out to Tom Behrendt and Carol Madvig for donating some of the prizes. To all those who set up and helped to clean up, please know, we couldn't have done this without you!

Todah Rabah!

It was truly wonderful to have so many people here having fun together.



Carol Madvig, Debbie Gariepy, and Stacey McEnnan came in to help set up even though they were unable to stay to play. Bless them!

Thank you to Hazzan Lev Ettelson who started out the calling for us, and to Irene Lehrer, who also helped with both.





Biscotti, fruit, veggies, three dips, potato & corn chips, cheese puffs, pretzels, Ice tea, lemonade and soda, there were lots of snacks!



See Event Photos tab on our web site
for more photos of this event.
bethemethaz.org

Grandview Terrace brings new meaning to *Independent Living*

Just steps from their front door, residents have access to a plethora of dining options, a bustling social scene, and a wealth of amenities—all conveniently located under one roof.

In addition, residents receive membership to Sun City West's state-of-the-art recreational center and social amenities, including championship golf courses and dozens of charter clubs. It's another way that **Grandview Terrace** makes it easy to live a healthy and happy life.

Explore Your Options with Confidence

Assess the financial compatibility of **Grandview Terrace** with your retirement plan. Try our simple calculator for an instant, obligation-free estimate.



Call our sales office
at (623) 975-8014
to schedule a tour!

SunHealthCommunities.org/grandview



Camino del Sol

FUNERAL CHAPEL & CREMATION CENTER

At Camino del Sol Funeral Chapel and Cremation Center, it is our mission to meet every need of the families we serve. Family-owned and operated, Camino del Sol is proud to serve the surrounding communities since 1989. You can count on us today, and for generations to come!

(623) 584-6299

www.caminodelsol.com





*May their memories be blessed.
As We remember them...*



**The following Yahrzeits will be observed during Av and Elul.
Kaddish may be said at Friday evening services (6:00 pm), and Saturday morning services (9:30 am)**

Date	Hebrew Date	Deceased	Observant	Relationship
8/1	Av 7	Simon Newman	Barbara Newman	Father
8/2	Av 8	Ida Lee	Joanie Jacobs	Mother
8/3	Av 9	Gus Forster	Paula Forster	Father in law
8/3	Av 9	Isser Koven	Sheldon Koven	Grandfather
8/3	Av 9	David Perlmutter	Myron Perlmutter	Father
8/5	Av 11	Nettie Freilich	Diane Freilich	Mother
8/6	Av 12	Bertha Rothschild	Jamie Rothschild	Grandma
8/9	Av 15	Hanan Ben-Yosef	Shoshana Perlmutter	Brother
8/9	Av 15	Melvin J. Silverman	Iris Silverman	Brother
8/11	Av 17	Robert Fisher	Shelly Moschel	Father
8/11	Av 17	Isador William Friedlander	Brad Friedlander	Grandfather
8/13	Av 19	Jack Dorman	Paula Forster	Uncle
8/17	Av 23	Steven Behrendt	Tom Behrendt	Son
8/17	Av 23	Barbara Paul	Ronald Paul	Wife
8/18	Av 24	Janith Davidson	Bradley Davidson	Mother
8/20	Av 26	Sam Rosen	Dr. Bernard Rosen	Father
8/20	Av 26	Ernest Rothschild	Steven Rothschild	Father
8/24	Av 30	Itzchak Moshe Giloni	Dov Giloni	Father
8/25	Elul 1	Rose Kanter	Phyllis Frank	Mother
8/29	Elul 5	Harry Schwartz	Sandra Shedroff	Brother
8/30	Elul 6	Gertrude Casper	Sheldon Koven	Aunt

Todah Rabah for your generous support!

Donation In-Kind

Brad and Marlene Friedlander

Nonmember - General Fund

Charles and Marisela Erichsen

Member—General Fund

Morrie Hesch

Sonia Marshall

Martha Dalmeida

Minionaires Donations

Minionaires

Yahrzeit Fund

Max and Sherry Lazar

In memory of Harry and Bessie Lazar

Morrie Hesch

Ann Goldfarb-Clapp

Joy and Peter Epstein

Myron and Shoshana Perlmutter

In memory of Israel Ben Yosef

Barry and Claire Maultasch

Tom Behrendt

In memory of Hanna Behrendt

Biblical Garden

Arnold Becker

Joy and Peter Epstein

Marilyn Newberg

Kiddush Fund

Joan Rothfeld

Gyorgyi Rosenthal

Sponsored Kiddush

Joel Levine

Ritual Committee

James and Esther Toney

Natalie Morrison

Sonia Marshall

Glen and Bobbie Zelkind

Barry Siegel

*Reflecting donations posted 6/23 -
7/22*

August 2025

Av - Elul 5785



SUN 27 (2)	MON 28 (3)	TUE 29 (4)	WED 30 (5)	THU 31 (6)	FRI Aug 1(7)	SAT 2 (8)
		<ul style="list-style-type: none"> 4pm Grief Support Group 		<ul style="list-style-type: none"> 9am Morning minyan 11am Torah Class - Reb Lev 	<ul style="list-style-type: none"> 6pm Friday Night Service 7:11pm Candle lighting 	<div>Erev Tish'a B'Av</div> <div>Parashat Devarim</div> <div>Shabbat Chazon</div> <ul style="list-style-type: none"> 9:30am Shabbat Service 7:28pm Fast begins 8:13pm Havdalah (45 min)
3 (9) <div>Tish'a B'Av</div> <ul style="list-style-type: none"> 8pm Fast ends 	4 (10)	5 (11) <ul style="list-style-type: none"> 4pm Grief Support Group 	6 (12)	7 (13) <ul style="list-style-type: none"> 9am Morning minyan 11am Torah Class - Reb Lev 	8 (14) <ul style="list-style-type: none"> 6pm Friday Night Service 7:04pm Candle lighting 	9 (15) <div>Parashat Vaetchanan</div> <div>Shabbat Nachamu</div> <div>Tu B'Av</div> <ul style="list-style-type: none"> 9:30am Shabbat Service 8:07pm Havdalah (45 min)
10 (16)	11 (17)	12 (18) <ul style="list-style-type: none"> 10am Sisterhood Meeting 4pm Grief Support Group 	13 (19)	14 (20) <ul style="list-style-type: none"> 9am Morning minyan 11am Torah Class - Reb Lev 	15 (21) <ul style="list-style-type: none"> 6pm Friday Night Service 6:57pm Candle lighting 	16 (22) <div>Parashat Eikev</div> <ul style="list-style-type: none"> 9:30am Shabbat Service 12pm Birthday Kiddush 7:59pm Havdalah (45 min)
17 (23)	18 (24)	19 (25) <ul style="list-style-type: none"> 9:30am Board meeting 4pm Grief Support Group 	20 (26)	21 (27) <ul style="list-style-type: none"> 9am Morning minyan 11am Torah Class - Reb Lev 	22 (28) <ul style="list-style-type: none"> 6pm Friday Night Service 6:49pm Candle lighting 	23 (29) <div>Mevarchim Chodesh Elul</div> <div>Parashat Re'eh</div> <ul style="list-style-type: none"> 9:30am Shabbat Service 7:51pm Havdalah (45 min)
24 (30) <div>Rosh Chodesh Elul</div> <ul style="list-style-type: none"> 12:30pm open house 	25 (1) <div>Rosh Chodesh Elul</div> <div>Rosh Hashana LaBehemot</div>	26 (2) <ul style="list-style-type: none"> 4pm Grief Support Group 	27 (3)	28 (4) <ul style="list-style-type: none"> 9am Morning minyan 11am Torah Class - Reb Lev 	29 (5) <ul style="list-style-type: none"> 6pm Friday Night Service 6:40pm Candle lighting 	30 (6) <div>Parashat Shoftim</div> <ul style="list-style-type: none"> 9:30am Shabbat Service 7:42pm Havdalah (45 min)
31 (7)	Sep 1(8)	2 (9) <ul style="list-style-type: none"> 4pm Grief Support Group 	3 (10)	4 (11) <ul style="list-style-type: none"> 9am Morning minyan 11am Torah Class - Reb Lev 	5 (12) <ul style="list-style-type: none"> 6pm Friday Night Service 6:31pm Candle lighting 	6 (13) <div>Parashat Ki Teitzei</div> <ul style="list-style-type: none"> 9:30am Shabbat Service 7:33pm Havdalah (45 min)



Our logo, created by our member, the late Max Gimpel (z"l), is the Shield of David made into a calligraphic Interpretation of the Hebrew letters, Beit Aleph, which signify the name of our Congregation, BETH EMETH, House of Truth.

Beth Emeth Congregation Board

President	Tom Behrendt
1st VP	Marilyn Newberg
3rd VP	Natalie Morrison
4th VP	Jordan Colbert
Treasurer	Brad Friedlander
Financial Secretary	Susan Hersch
Recording Secretary	Marlene Friedlander
Corresponding Secretary	Irene Lehrer

Directors

Arnold Becker
Arthur Bennett
Leah Tarnor
Harvey Zarensky
Marvin Wachs

Sisterhood President

Ketzi Toney