

# Beth Emeth Observer

## BETH EMETH CONGREGATION OF THE WEST VALLEY



Follow us:



**Hazzan Lev Ettelson**

*Spiritual Leader & Director of Education*

13702 W. Meeker Blvd., Sun City West, AZ 85375  
office@bethemethaz.org www.bethemethaz.org  
Office hours Mon-Fri - 9 AM - 12 PM (ph)623-584-7210

**Iyar 5785**

**May 2025**

### Lag B'Omer

**Lag B'Omer begins**

Thursday night, May 15, 2025.

**Lag B'Omer ends**

Friday, May 16, 2025.



### In this issue

Our Services and Classes	2
President's Message	3
From the Hazzan's Study	4
From the Editor	5
1st VP Message	6
Ritual Committee	6
Judaica Shop	7
Treasurer's update	8
Etz Chaim/Yahrzeit Board	9
Biblical Garden	10
Birthdays/Anniversaries	11
Hadassah Event	12
Sisterhood	13-14
Special Event	15
Event Photos	16-19
Yahrzeits	20
Donations	21
Advertisement	22
Calendar	23

### Shabbat Candle Lighting May 2025



5/2— 6:55 pm  
5/9— 7:01 pm  
5/16—7:06 pm  
5/23—7:11 pm  
5/30—7:15 pm

**Volume 2025—Number 14**

## **Classes are held in our Library**

**Grief Support Group** with Dr. Michael Weinberg and Judith Weinberg, R.N. Tuesdays at 4:00 pm—(no charge— open to all)

**Torah Classes:** Thursday mornings at 11:00 am

**Classes are \$5 each for members- \$10 each for nonmembers**

## **Shavuot**

**Sunday June 1st:** Erev Shavuot, candle lighting at 7:15 pm with no services

**Monday June 2nd:** Shacharit service at 9:30 am

Candle lighting from an existing flame after 8:17 pm

**Tuesday June 3rd:** Shacharit service at 9:30 am  
Yizkor at 10:30 am

Holiday ends at 8:17 pm



**FROM THE DESK OF TOM BEHRENDT, PRESIDENT  
Beth Emeth Congregation of the West Valley**

Shalom!

To paraphrase the late JFK, "Ask not what your Shul can do for you, but what you can do for the Shul!"

So what can you do? Attend Services to ensure a Minyan for those davening Kaddish. Help out by volunteering at events. Make Beth Emeth part of your financial planning as we are a 501(3)c tax deductible organization. Enroll your Fry's rewards with Beth Emeth as part of Fry's Community Rewards. You get your discounts and we get rewarded as well! Be a part of the solution.

We would like to restart our Men's Club and are looking for someone to be the Spokesperson, please reach out to me or the office if you are willing to help.

We have many books that are going to be buried soon (proper way to respect G-d's name) If anyone would like a copy of the Friday night prayer book, **Sim Shalom**, or the High Holiday prayer book, please contact the Office or stop by and pick up a copy.

I mentioned during the Passover services that there is an app that should be on your phone. it is called SNUG Safety, [www.snugsafe.com](http://www.snugsafe.com), and it is free. You push the app each day and it signals that you are safe and well to a family member or a neighbor. I have mine set that if I fail to check in by 9:00 AM, my daughter gets an alert and she can notify the authorities to do a wellness check. I mention this as the result of a Member that was found unconscious after 3 days.

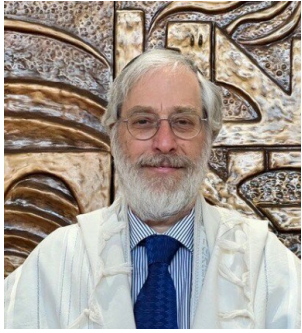
You should also look to get a lock box from the fire department that only they can access to get into your home in the event of an emergency (rather than crashing your front door). Please spread the word to your friends, family and neighbors to stay safe.

We hope that you had a Zeissen Pesach and look forward to Shavuot on June 2nd.

A handwritten signature in blue ink that reads "Tom Behrendt".

## Reflections on Torah and Tradition

### Hazzan Lev Ettelson



"These are the journeys of The Children of Israel, who went forth from the land of Egypt..." (Numbers 33:1)

"The journey of a thousand miles begins with a single step." (Tao Te Ching, Ch. 64)

Our ancestors were a nomadic people for generations before settling in the land of Israel and even then, Jews have wandered this earth from generation to generation throughout our diasporic history. This sense of feeling unsettled is all too familiar for Jews, especially during times of global upheaval and uncertainty. The similar sounding Hebrew words *Galut* (exile) and *Geulah* (redemption, liberation) express a central concept of the Torah. It begins with the story of the Garden of Eden, when for a brief moment all beings lived in a state of harmonious balance only to be shattered by an act of forgetfulness which results in exile. This theme repeats itself throughout the book of Genesis until the *Galut* of Egypt which our Sages see as the prototype for successive exiles.

As with everything in Torah there is the outer manifestation and the inner experience. There is exile of the body and that of the spirit. The journey of liberation from the narrow confines of Egypt passes through the Sea of Reeds (symbolizing rebirth) on the way to Mount Sinai (which is often characterized as a wedding between Hashem and B'nai Yisrael). In our liturgical calendar this is marked by the forty-nine days of counting the Omer between Pesach and Shavuot. According to Kabbalah, these seven weeks reflect the seven lower sefirot, which encompass "Forty-nine steps to personal refinement (R. Simon Jacobson)" each day of the week being a different combination of spiritual energies. The attributes of these seven sefirot are *Chesed* (lovingkindness), *Gevurah* (discipline), *Tiferet* (harmony), *Netzach* (endurance), *Hod* (humility), *Yesod* (foundation, bonding) and *Malchut* (nobility). The combination for the tenth day of the Omer, for example, is *Tifferet* of *Gevurah* (harmony within restraint). There are many Omer books (and apps) available which offer daily lessons and exercises on character development.

Our Sages teach us "*Derech Eretz Kadmah LaTorah* - Good behavior (proper conduct) precedes the Torah." In other words, "acting like a mensch" is the foundation or prerequisite of what the Torah requires of us. "Her (the Torah) ways are pleasant and all her paths are peaceful (Proverbs 3:17)." We are all on a journey of growth, refinement and discovery. Each moment of every day presents an opportunity to awaken to our true nature and to extend ourselves in care for ourselves and one another. None of us is perfect, yet, we all have the seeds of the Tree of Life within us. There is a tradition that Mount Sinai blossomed with flowers when the Torah was given to Moses. It is customary for synagogues to be decorated with flowers on Shavuot in celebration of the receiving of Torah. If we water those positive seeds within us and each other, we will bring forth blossoms and fruits which will delight and nourish all of us.

*Reb Lev*



## From the Editor's desk!

Greetings!

The Omer is a time of semi-mourning, when weddings and other celebrations are forbidden, and as a sign of grief, observant Jews do not cut their hair. Anthropologists say that many peoples have similar periods of restraint in the early spring to symbolize their concerns about the growth of their crops. But the most often cited explanation for the Jewish practice comes from the Talmud, which tells us that during this season a plague killed thousands of Rabbi Akiva's students because they did not treat one another respectfully. (Yevamot 62b) The mourning behavior is presumably in memory of those students and their severe punishment.

The Talmud relates that in the weeks between the Jewish holidays of Passover and Shavuot, a plague raged among the disciples of the great sage Rabbi Akiva (teacher of Rabbi Shimon bar Yochai), "because they did not act respectfully towards each other." According to a late medieval tradition, Simeon ben Yochai is buried in Meron, and this association has spawned several well-known customs and practices on Lag B' Omer, including the lighting of bonfires and pilgrimages to Meron.

According to a medieval tradition, the plague ceased on Lag B' Omer, the 33rd day of the Omer. (The Hebrew letters *lamed* and *gimel* which make up the acronym "Lag" have the combined numerical value of 33.) As a result, Lag B' Omer became a happy day, interrupting the sadness of the Omer period for 24 hours. Lag B' Omer also commemorates another joyous event.

It behooves us during this time and always to treat each other respectfully,

\*\*\*\*\*

With this issue of the Observer, we are starting to partner with area businesses as paid advertisers.

It is with great pleasure that we welcome Sun Health Communities—Grandview Terrace and Camino Del Sol to the Beth Emeth Congregation of the West Valley family!

We look forward to a long and beneficial partnership!

If you know of any business that might want to form a partnership with us, please let me know!!

B' Shalom,



**Marlene Friedlander, Editor**

**Questions or comments on this issue?**

**Send them to [editor@bethemethaz.org](mailto:editor@bethemethaz.org)**

## From your 1st Vice President!

Shema Yisrael, Adonai eloheinu, Adonai echad.

Dear G-D, almighty Hashem, please hear our prayers

Save our people, save Israel from the terror that has struck the entire country of Israel, and the world. Why? Why? Are the Jews around the world persecuted for just being?

Parents, children, families torn apart, and for what??

HATE, HATE from those who don't understand. Who have been sent from the depths of Hell, to destroy those who believe in something bigger than all of us.

As I sit here at 1:00 a.m., I want to cry out to you, to revenge the deaths of all those killed, slaughtered, beaten, and raped. For the future generations to grow up in peace.

What has the world lost? Future scientists, doctors, teachers, lawyers, farmers, students, who may one day save the earth from destruction.

So, I end this prayer with the HOPE that will remain within me, that peace will return.

Shalom,

Marilyn Hope

Marasha Tikvah

[marilyn.newberg@bethemethaz.org](mailto:marilyn.newberg@bethemethaz.org)

## Aliyot (Ritual Committee)

I am always so grateful to everyone who participates in our services with accepting the honor of an Aliyah. Our services are more meaningful with your participation.

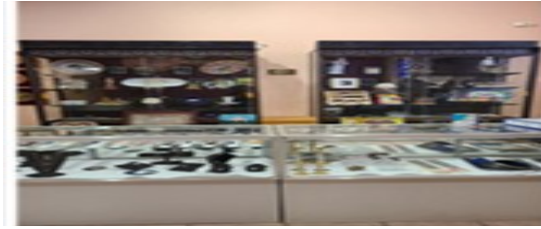
**Are you interested in learning about the Aliyot? When to go up to the Bimah or Ark? What to do? Where to stand? When to go back to your seat? We are planning on having a class in the near future! Let me know if you are interested or leave your name with the Office!!**

Reb Lev is also available if you wish to re-chant your Bar/Bat Mitzvah Haftarah or learn to chant Torah or a Haftarah portion.

I look forward to greeting each of you at services!

**Natalie Morrison**

[3rdvicepresident@bethemethaz.org](mailto:3rdvicepresident@bethemethaz.org)



**Greetings from out JUDAICA SHOP!**

**Don't forget Mother's Day is Sunday, May 11!**

**We have everything you need for your Shabbat and Gift Giving needs!!! We have  
Mezuzoth, Jewelry and  
Artwork!  
Looking for something  
special? Let me know!**

**Stop by anytime Monday– Friday 9:00 am—noon!  
Payments accepted by cash,  
Credit card, check or Zelle!**

**Susan Hersch, Judaica Shop Manager  
[financialsecretary@bethemethaz.org](mailto:financialsecretary@bethemethaz.org)**

### **Treasurer's Corner**

- ☆ We have only received 1/2 of the dues payments for this year and need your help to pay our bills and abide by our budget.
- ☆ We have restricted funds such as the Biblical Garden that need your support to accomplish what is needed.
- ☆ We are seeking donations to help cover the estimated \$3,000 needed to inspect and repair our Sefer Torahs.

Do you grocery shop at Fry's? Link your Rewards Card to help support Beth Emeth Congregation!! **YOU WILL NOT LOSE ANY OF YOUR DISCOUNT BENEFITS.**

We accept contributions by cash, check, credit card, or Zelle.  
If you have questions, please email me at [treasurer@bethemethaz.org](mailto:treasurer@bethemethaz.org).

Brad Friedlander, Treasurer

# Treasurer's Financial Update

Our congregation depends on your financial contributions to enable us to provide the religious services and programs you want. At the Congregation Membership Meeting in January, we approved a budget with some important sources of revenue.

**Membership (Dues): \$52,875**

**Fund Raising: \$39,400**

**Ritual: \$16,525**

## Dues

We request payment of dues by April 15<sup>th</sup> so that we are well-positioned for the major summer expenses (*e.g.*, electricity) and the High Holiday season.

**At present, we have only received \$33,539 in membership dues.**

**To those who have already paid your pledge, Todah!**

**For the rest, please make a concerted effort to help us meet our budget.**

## Payment Methods

We accept payment in multiple forms, shown in order of preference.

**Zelle payment to [treasurer@bethemethaz.org](mailto:treasurer@bethemethaz.org)**

**Check**

**Cash**

**Credit card: We pay a 5% fee for all credit card transactions, so we only receive \$712.50 of a \$750 payment.**

## Fund Raising

Our three major fundraising events are on track to meet the budgeted income of \$16,400.

**Film Festival netted over \$7,000.**

**Mah Jongg tournament netted over \$1,000**

**Casino Night is planned for later this year**

Your support for these events has been a great help in meeting our budgeted goals.

## Donations

For the two restricted funds that need our attention, donations can be earmarked for them.

**Biblical Garden Fund**

**Torah Maintenance Fund**



## Etz Chaim—Our Tree of Life

I invite you to become part of the permanent legacy of our Synagogue. Through the end of the year, “leaves” on our Etz Chaim (Tree of Life) in our Lobby are just **\$99 each!**

**“Apples”** are only **\$150!**

Buy them for yourself or a loved one!

Or commemorating a special occasion! Let’s fill the Tree!

Happy to discuss with you how to place an order.

**Tom Behrendt, President**  
**president@bethemethaz.org** or  
**office@bethemethaz.org**



## Yahrzeit Plaques

We have many Yahrzeit plaque spaces available on our Sanctuary wall.

Yahrzeit plaques can be purchased in memory of someone who has passed away or be reserved for a future use.

**Plaques are \$350 each.**

Payment by cash, check, credit card or Zelle!

Please reach out to me for further information.

**Arnold “Arnie” Becker, Director**  
**Arnold.becker@bethemethaz.org**





## Our Biblical Garden

Back in 2006, the Biblical Garden looked like this...lush and beautiful!



Today it looks like this...overgrown and barren.



The passing of my sister, Rhoda, has taken great deal away from me. A few months ago, I walked thru our Biblical Gardens in search of a quiet place to sit and restore my thoughts. I was horrified at the shape the once beautiful gardens had turned into. I decided that it needed repair; replace, and replant everything that had died out. I can't do this alone for as you know it takes a village. I shared my concerns with my nephew Craig, who sent Beth Emeth Congregation a check for \$2500. I am so grateful for his generosity, BUT your support of this project would be greatly appreciated. We now have barely enough **to get started**. *But it's still not enough...* But a start to reclaiming the beauty of the Gardens. We need at least \$6000.

In doing this work, I would like to dedicate the "new" gardens in memory of Rhoda Lessner (z"l).

Please consider making a donation to the beautification of our property.

Marilyn Newberg, [marilyn.newberg@bethemethaz.org](mailto:marilyn.newberg@bethemethaz.org)



Mark Friedman	May 15
Joanie Jacobs	May 16
Howard Emmerman	May 21
Harvey Zarensky	May 22
Leah Tarnor	May 24
Shoshana Perlmutter	May 25
Joan Rothfeld	May 30



Enid and Gary Cohen	May 4
Carol and Michael Madvig	May 24





HADASSAH



JOIN TIKVAH-WEST VALLEY  
HADASSAH FOR A

# Mother's Day Tea Party

MONDAY | *May 12* | 10:30AM

*Reb Lev Ettelson will speak about mothers in  
the Bible. Be sure to bring your favorite tea cup!*

Register by May 5<sup>th</sup> at  
**[events.hadassah.org/TikvahTea](https://events.hadassah.org/TikvahTea)**  
\$36 Registration • Address provided upon RSVP.

**Questions? Contact Judi Bourd at [zadie3@aol.com](mailto:zadie3@aol.com)**

© 2024 Hadassah, The Women's Zionist Organization of America, Inc. Hadassah®, the H logo, and Hadassah the Power of Women Who Do are registered trademarks of Hadassah, The Women's Zionist Organization of America, Inc.

In accordance with IRS tax laws, only the amount of your gift that exceeds the value of goods and services received in consideration of your gift is tax deductible as a charitable contribution for Federal income tax purposes. The amount of the individual ticket to the event that is tax deductible is \$32. Charitable deductions are allowed to the extent provided by law, please consult with your personal tax advisor. Hadassah shall have full dominion, control, and discretion over all gifts (and shall be under no legal obligation to transfer any portion of a gift to or for the use or benefit of any other entity or organization).





## Message from Sisterhood President Beth Emeth Congregation of the West

I hope that each of you had a meaningful and joyous Passover! As we had to cancel our April planning meeting, Sisterhood will be joining Hadassah for their Mother's Day Tikvah Tea on May 12th, at which Hazzan Lev Ettelson will be speaking on the women of the Bible. Look for information on the Hadassah Flier and be sure to register as the deadline is May 5th.

Sisterhood's next planning meeting will be on Tuesday May 13th at 10:00 a.m. in our library. All are welcome to attend, meet our members, and help us plan for our June program and beyond. Your ideas are important to us! Together we can celebrate, contribute, create, learn, grow, and have fun!

Shavout Services will be held on Monday and Tuesday June 2nd and 3rd at 9:30 a.m. **Yizkor services are included on June 3rd and occur approximately at 10:30 a.m.**

As I was doing some reading in preparation for Passover, I came across a wonderful article on [aish.com](http://aish.com) **Women and the Exodus: A Biblical Exploration** by Rabbi Lord Jonathan Sacks of blessed memory.

**"Without Moses there might have been no exodus. But without the heroism of these six women there would have been no Moses. Who were they?" Yocheved**, Moses's mother, **Miriam**, Moses's sister, **Batya**, Pharaoh's daughter, **Zipporah**, Moses's wife, and lastly **Shifra & Pua**, the midwives that defied Pharaoh's orders.

Indeed, so important are their actions, the book of Exodus begins by specifically naming and telling us about Shifra & Pua. Rabbi Sacks points out that there is debate over, if they were Egyptian midwives to the Hebrews or Hebrew midwives. Batya is clearly Egyptian, and Zipporah is Midianite, only Yocheved and Miriam are Hebrews, so what is their connection.

Each are women of action, courage, and compassion. Unlike Moses who is commanded to act by HaShem, these women chose to act because they "had a strong moral sense, indomitable humanity, and an intuitive grasp of what heaven asks of us on earth: they feared G-d." What wonderful role models! I hope you enjoy reading the full article...and other articles that may be of interest to you, as Aish is a great resource, with many topics.

Sisterhood is a wonderful way to socialize, celebrate, contribute to community, learn and grow in our beautiful Jewish tradition. I look forward to having you join us May 13th for our planning meeting, and at future program events.

Ketzi Toney, Sisterhood President



Please join us for our next Sisterhood meeting.

**Tuesday, May 13 at 10:00 am in the Library**

We have a lot to discuss and plan for the remainder of this year.

Bring your ideas and enthusiasm with you!

If you have not as yet joined Sisterhood for the upcoming year, the membership flyer is in this issue of the Observer!!

We look forward to seeing you at the meeting!



**Sunday, May 18, 2025**

**2:00 pm – 3:30 pm**

## **Preparing for the End of Life - Presentations & Discussion**

Program is sponsored by the Beth Emeth Congregation Grief Group

---

On Sunday, May 18<sup>th</sup>, 2025, from 2:00 – 3:30 p.m. participants of the Beth Emeth Grief Group will give brief presentations followed by a discussion.

Congregation members who are interested in getting their affairs in order and caregivers are invited to attend.

### **The program will include:**

An Opening prayer – Reb Lev

The meeting will be led by Judi Weinberg

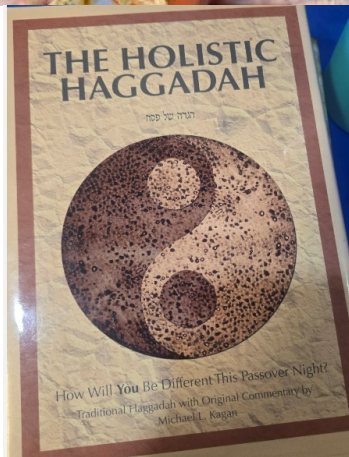
1. What documents are needed?– Judi Weinberg
2. How to make your wishes known – Reva Litt
3. Tools to have your medical information readily available - The Vial of Life and Do Not Resuscitate (DNR) – Suzan Giloni
4. Discussion period and distribution of handouts

**Event is for Members only, limited to 25.**

Please RSVP by May 14, 2025, to the Office at (623)-584-7210 or [office@bethemethaz.org](mailto:office@bethemethaz.org)



## Passover throughout the Beth Emeth Community





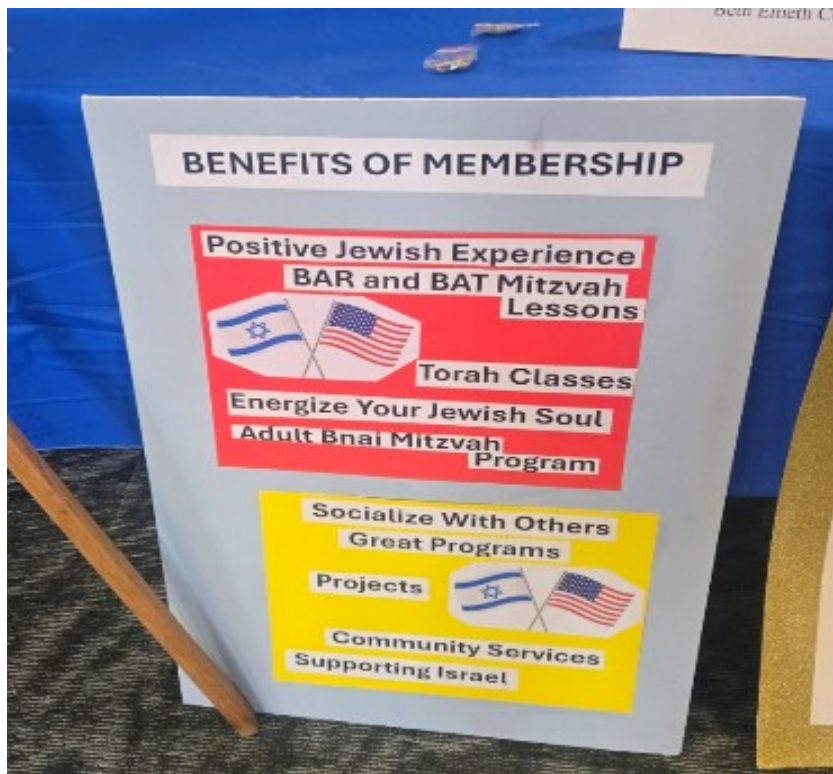




# On Tuesday, April 15 We participated in the Senior Expo at the Briarwood Golf Club!









*May their memories be blessed.  
As We remember them...*



The following Yahrzeits will be observed during Shevat.

Kaddish may be said at Friday evening services (6:00 pm), and Saturday morning services (9:30 am)  
El Malei Rachamim, the Memorial prayer, may also be said at the Thursday morning Minyan  
(9:00 am) preceding the Yahrzeit date.

Date	Hebrew Date	Deceased	Observant	Relationship
5/1	Iyar 3	Herman Rovinsky	Andrea Cohen	Father
5/2	Iyar 4	Jules Baer	Alice Bernstein	Father
5/2	Iyar 4	William Besselman	Irene Lehrer	Father
5/2	Iyar 4	Ruth Kram	William Kram	Mother
5/3	Iyar 5	H. Howard Loewith	Carol Loewith	Husband
5/4	Iyar 6	Harold Rose	Carol Madvig	Father
5/6	Iyar 8	Norma Rosen	Dr. Bernard Rosen	Wife
5/7	Iyar 9	Meyer Libman	Marilyn Newberg	Grandfather
5/7	Iyar 9	Mary Scher	Ann Goldfarb/Clapp	Mother
5/7	Iyar 9	Ruth Tarnor	Charlie Tarnor	Mother
5/9	Iyar 11	Arthur Dorf	Sherry Lazar	Father
5/9	Iyar 11	Ivan Keer	Sandra Shedroff	Cousin
5/11	Iyar 13	Ethel Adele Dorman	Paula Forster	Mother
5/11	Iyar 13	Asna Rifka Moskowitz	Sheldon Koven	Grandmother
5/14	Iyar 16	Gertrude Besselman	Irene Lehrer	Mother
5/14	Iyar 16	Harry Plotkin	Sonia Altman	Father
5/15	Iyar 17	Kay Feldman	Iris Silverman	Sister
5/16	Iyar 18	Shemuel Giloni	Dov Giloni	Brother
5/18	Iyar 20	Betty Rothfeld	Joan Rothfeld	Mother
5/18	Iyar 20	Florence Rothschild	Jamie Rothschild	Mother
5/19	Iyar 21	Marc Lowenthal	Joy Epstein	Brother
5/20	Iyar 22	Mildred Becker	Arnold Becker	Mother
5/21	Iyar 23	Libby Pinkes	Iris Silverman	Sister
5/22	Iyar 24	Minnie Epstein	Gail Davis	Grandmother
5/30	Sivan 3	Frances Rothzeid	Saul Rothzeid	Mother



# Todah Rabah for your generous support!

## Sponsored Kiddush

Sisterhood Beth Emeth

## Kiddush Fund

James and Esther Toney

## Ritual Committee

Arnold Becker

Bradley and Sherry Davidson

Diane Freilich

Mark and Madelaine Friedman

Susan Hersch

Morrie Hesch

Sonia Marshall

Natalie Morrison

Joan Rothfeld

James and Esther Toney

Pastor Denise Landes

Linda Ziegler

Plus nonmembers

## Yahrzeit Fund

Arthur and Barbara Bennett  
In Memory of Marc Isaacson

Gary and Enid Cohen  
In Memory of Elaine Cohen

Evelyn Dragiff  
In Memory of Estelle Cohen

Peter and Joy Epstein  
In Memory of Ruth Epstein

Mark and Madelaine Friedman  
In Memory of Claire Nadorf

Mark and Madelaine Friedman  
In Memory of Matilda Friedman

Morrie Hesch  
In Memory of Edith Hesch

Morrie Hesch  
In Memory of Allison Hesch

Sheldon Koven  
In Memory of Judi Koven

Marilyn Newberg  
In Memory of Mary Pinkus Halpern

Marilyn Newberg  
In Memory of Dear Friend Hermine

Barbara Newman  
In Memory of Harry Newman

Steven and Janice Rothschild  
In Memory of our Father

Lael Summer  
In Memory of Rose Meyerowitz

James and Esther Toney  
In Memory of Marcia Friedman

## Judaica Shop

James May

James and Esther Toney

## Biblical Garden

Arthur and Barbara Bennett

Dov and Suzan Giloni

Joan Rothfeld

## General Fund

Jordan and Rosie Colbert

Sonia Marshall

## Nonmember—General Fund

Kroeger Markets

Charles and Marisela Erichsen

Dr. Sylvain Van De Rijn—  
Jewish Community Fund

## Minionaire Donations

Minionaires

## Torah Fund

Jewish Theological Seminary

## Tree of Life

Sally Anne Hall

Reflecting donations posted 3/21-4/20

## Grandview Terrace brings new meaning to *Independent Living*

Just steps from their front door, residents have access to a plethora of dining options, a bustling social scene, and a wealth of amenities—all conveniently located under one roof.

In addition, residents receive membership to Sun City West's state-of-the-art recreational center and social amenities, including championship golf courses and dozens of charter clubs. It's another way that **Grandview Terrace** makes it easy to live a healthy and happy life.

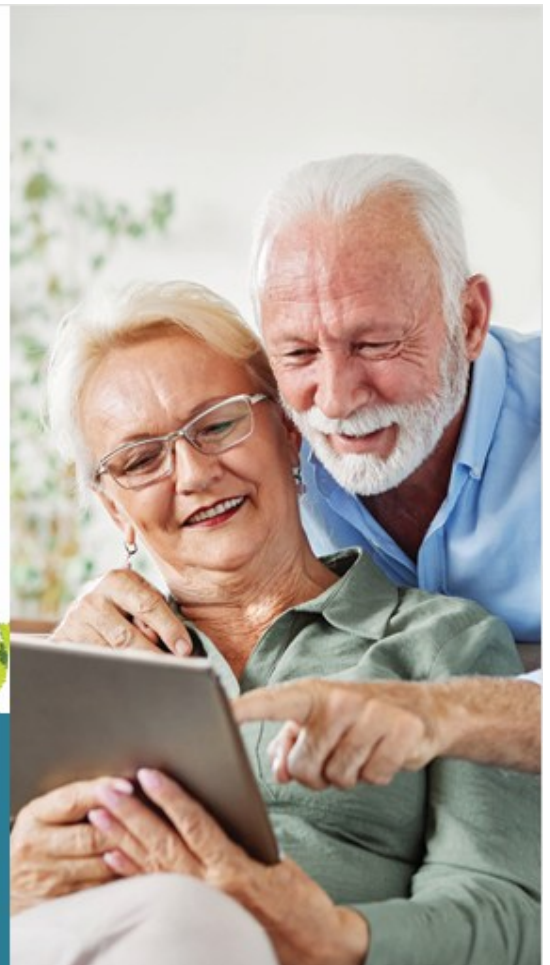
### Explore Your Options with Confidence

Assess the financial compatibility of **Grandview Terrace** with your retirement plan. Try our simple calculator for an instant, obligation-free estimate.



Call our sales office  
at (623) 975-8014  
to schedule a tour!

[SunHealthCommunities.org/grandview](http://SunHealthCommunities.org/grandview)



## Camino del Sol

FUNERAL CHAPEL & CREMATION CENTER

At Camino del Sol Funeral Chapel and Cremation Center, it is our mission to meet every need of the families we serve. Family-owned and operated, Camino del Sol is proud to serve the surrounding communities since 1989. You can count on us today, and for generations to come!

(623) 584-6299

[www.caminodelsol.com](http://www.caminodelsol.com)



# May 2025

## Iyar— Sivan 5785



SUN 27 (29)	MON 28 (30)	TUE 29 (1)	WED 30 (2)	THU May 1(3)	FRI 2 (4)	SAT 3 (5)
14th day of the Omer	15th day of the Omer Rosh Chodesh Iyar	16th day of the Omer Rosh Chodesh Iyar ● 4pm Grief Support Group	17th day of the Omer Yom HaZikaron	18th day of the Omer Yom HaAtzma'ut ● 9am Morning minyan ● 11am Torah Class - Reb Lev	19th day of the Omer ● 6pm Friday Night Service ● 6:55pm Candle lighting	20th day of the Omer Parashat Tazria-Metzora ● 9:30am Shabbat Service ● 8pm Havdalah (45 min)
4 (6)	5 (7)	6 (8)	7 (9)	8 (10)	9 (11)	10 (12)
21st day of the Omer	22nd day of the Omer ● 9am Senior Expo	23rd day of the Omer ● 4pm Grief Support Group	24th day of the Omer	25th day of the Omer ● 9am Morning minyan ● 11am Torah Class - Reb Lev	26th day of the Omer ● 6pm Friday Night Service ● 7:01pm Candle lighting	27th day of the Omer Parashat Achrei Mot-Kedoshim ● 9:30am Shabbat Service ● 8:05pm Havdalah (45 min)
11 (13)	12 (14)	13 (15)	14 (16)	15 (17)	16 (18)	17 (19)
28th day of the Omer	29th day of the Omer Pesach Sheni	30th day of the Omer ● 10am Sisterhood Meeting ● 4pm Grief Support Group	31st day of the Omer	32nd day of the Omer ● 9am Morning minyan ● 11am Torah Class - Reb Lev	33rd day of the Omer Lag BaOmer ● 6pm Friday Night Service ● 7:06pm Candle lighting	34th day of the Omer Parashat Emor ● 9:30am Shabbat Service ● 12pm Birthday Kiddush ● 8:10pm Havdalah (45 min)
18 (20)	19 (21)	20 (22)	21 (23)	22 (24)	23 (25)	24 (26)
35th day of the Omer ● 2pm Preparing for Death	36th day of the Omer	37th day of the Omer ● 9:30am Board meeting ● 4pm Grief Support Group	38th day of the Omer	39th day of the Omer ● 9am Morning minyan ● 11am Torah Class - Reb Lev	40th day of the Omer ● 6pm Friday Night Service ● 7:11pm Candle lighting	41st day of the Omer Mevarchim Chodesh Sivan Parashat Behar-Bechukotai ● 9:30am Shabbat Service ● 8:15pm Havdalah (45 min)
25 (27)	26 (28)	27 (29)	28 (1)	29 (2)	30 (3)	31 (4)
42nd day of the Omer	43rd day of the Omer Yom Yerushalayim	44th day of the Omer ● 4pm Grief Support Group	45th day of the Omer Rosh Chodesh Sivan	46th day of the Omer ● 9am Morning minyan ● 11am Torah Class - Reb Lev	47th day of the Omer ● 6pm Friday Night Service ● 7:15pm Candle lighting	48th day of the Omer Parashat Bamidbar ● 9:30am Shabbat Service ● 8:20pm Havdalah (45 min)





**Our logo, created by our member, the late Max Gimpel (z"l), is the Shield of David made into a calligraphic Interpretation of the Hebrew letters, Beit Aleph, which signify the name of our Congregation, BETH EMETH, House of Truth.**

## **Beth Emeth Congregation Board**

President	Tom Behrendt
1st VP	Marilyn Newberg
2nd VP	Ketzi Toney
3rd VP	Natalie Morrison
4th VP	Jordan Colbert
Treasurer	Brad Friedlander
Financial Secretary	Susan Hersch
Recording Secretary	Marlene Friedlander
Corresponding Secretary	Irene Lehrer

### **Directors**

Arnold Becker  
Arthur Bennett  
Leah Tarnor  
Harvey Zarensky  
Marvin Wachs

### **Sisterhood President**

Ketzi Toney