

Beth Emeth Observer

BETH EMETH CONGREGATION OF THE WEST VALLEY



Follow us:



Hazzan Lev Ettelson

Spiritual Leader & Director of Education

13702 W. Meeker Blvd., Sun City West, AZ 85375
office@bethemethaz.org www.bethemethaz.org
Office hours Mon-Fri - 9 AM - 12 PM (ph)623-584-7210

Sivan– Tammuz 5785

June 2025

From Passover &
The Exodus
To receiving
The 10 Commandments
Please Join Us For

**Shavuot
Services**



In this issue

Our Services and Classes	2
President's Message	3
From the Hazzan's Study	4
From the Editor	5
1st VP Message	6
Ritual Committee	6
Judaica Shop	7
Treasurer's update	8
Etz Chaim/Yahrzeit Board	9
Biblical Garden	10
Birthdays/Anniversaries	11
Sisterhood	12 - 15
Event Photos	16
Hadassah Events	17 - 19
Advertisement	19 - 20
Yahrzeits	21
Donations	22
Calendar	23

**Monday June 2nd at 9:30 am
And
Tuesday June 3rd at 9:30 am
Tuesday Service Includes Yizkor
(Yizkor Approximately at 10:30 am)**

Shabbat Candle Lighting June 2025



6/6 — 7:19 pm
6/13 — 7:22 pm
6/20 — 7:24 pm
6/27 — 7:25 pm

Volume 2025—Number 15

Classes are held in our Library

Grief Support Group with Dr. Michael Weinberg and Judith Weinberg, R.N. Tuesdays at 4:00 pm—(no charge— open to all)

Torah Classes: Thursday mornings at 11:00 am

Classes are \$5 each for members - \$10 each for nonmembers

Looking forward– Mark your calendars!!

Erev Rosh Hashanah — Monday, Sept 22

Rosh Hashanah—Tuesday, Sept 23

2nd Day Rosh Hashanah—Wednesday, Sept 24

Kol Nidre— Wednesday, October 1

Yom Kippur—Thursday, October 2

Sukkot—Monday, October 6—Monday, October 13

Film Festival 2026

January 24-26, 2026

Mah Jongg Tournament

Sunday, March 15, 2026



**FROM THE DESK OF TOM BEHRENDT, PRESIDENT
Beth Emeth Congregation of the West Valley**

Shalom!

Happy Shavuot! Yizkor will be observed on Tuesday June 2 in the Synagogue or participate via Livestream on our YouTube Channel. Please join us to observe the Holiday.

Beth Emeth Congregation has always been there for You and Your Family. Now Beth Emeth needs your help.

We recently had a large leak in the Women's bathroom and reconstruction is underway. We have a deductible of \$5000 under our insurance policy. Sisterhood has graciously contributed \$2500 towards the deductible but, we still need another \$2500.

There was a water main break from the street to the building! So far it is costing us \$3625.

AND THERE IS MORE.....

Our 3 Torahs are in need of inspection and repair. Again, Sisterhood has stepped up with a contribution of \$1000—**todah rabah**. We do not as yet know how much will be needed for the inspection and repair but, it will be in the thousands. As the Torahs are an integral part to the functioning of our Congregation, ***please consider*** donating to the Torah Fund.

The Biblical Garden is being upgraded - There is currently a matching donation of \$5000 from a generous anonymous donor. The Biblical Garden might be your place to donate.

We will need square card tables for the 2026 Mah Jongg Tournament as well as a new banner.

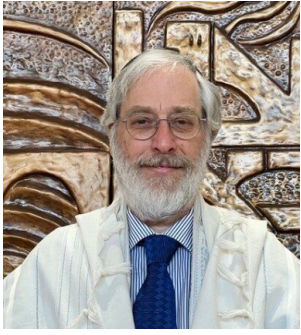
We need help paying for these and are hoping that You will contribute and make a significant donation to one or more of these projects. Every dollar (or ten or a hundred) helps!

On Behalf of the Board, I want to thank Sisterhood for its donations of \$2500 towards the insurance deductible, \$1000 for the Torah Fund and a donation to the Biblical Garden.

A handwritten signature in dark ink, appearing to read "Tom Behrendt". The signature is written in a cursive, flowing style.

Reflections on Torah and Tradition

Hazzan Lev Ettelson



"Hillel says: Be among the disciples of Aaron, loving peace (*Ohev Shalom*) and pursuing peace (*Rodef Shalom*), loving people, and bringing them closer to the Torah." Pirkei Avot 1:12

A few weeks ago on the Shabbat of Parashat Emor, I quoted the well-known verses, "Love your neighbor as yourself" and "Love the stranger in your midst" and I invited comments. There was a range of responses: an affirmation of commitment to these mitzvot; the prerequisite to love oneself; and questioning whether it is possible to love those who commit heinous acts. Someone also referred to the Talmudic dictum, "If someone comes to kill you, act first and kill him" (Sanhedrin 72a) which is referred to as *Din Rodef* (the law of the pursuer). This is based on Exodus 22:1 which allows for killing a thief (in self-defense) who is tunneling into your home. The Talmud goes on to teach that it is permissible to kill a *Rodef* (someone pursuing another with homicidal intent) not only in cases of self-defense, but to also to defend the lives of others, *if no other option exists*.

In 1993, Prime Minister Yitzhak Rabin a"h had just signed the "Israeli-Palestinian Declaration of Principles" at the White House which at the time he acknowledged, "is not so easy... for myself... nor for the people of Israel... (or) the Jewish people in the Diaspora who are watching us now with great hope, mixed with apprehension. It is... not easy for the families of the victims of the wars, violence, terror, whose pain will never heal... we remember each and every one with everlasting love." With great emotion he uttered the words, "Enough of blood and tears... We have no desire for revenge. We harbor no hatred towards you. We, like you... want to build a home, to plant a tree, to love, to live side by side with you in dignity, in empathy, as human beings, as free men. We are today giving peace a chance..." Two years later he was assassinated at a peace rally in a climate of increasingly dangerous political rhetoric.

Mr. Rabin was acting as a *Rodef Shalom* in an effort to end the decades long conflict which continues to claim many lives and cause great suffering. The assassin's misguided belief that he was acting in accordance with *Din Rodef*, viewing Mr. Rabin as an existential threat, was firmly rejected by mainstream Israeli rabbis. This shockingly violent act caused tremendous pain, trauma and division within Am Yisrael.

We live in an increasingly complex and interconnected world. At a time when aggression escalates to violence all too often, the Torah reminds us of the centrality of peace and love. First we must do all that we can to cultivate inner peace. If we find ourselves in the midst of conflict can we seek understanding and reconciliation? It is not easy and sometimes it's impossible, but the Torah shows us a way forward so that we may witness the fulfillment of the vision of the prophet Micah when everyone shall "sit under his vine and under his fig tree; and none shall make them afraid."

Reb Lev

From the Editor's desk!

Greetings!

To those of you who have already left for the Summer, safe travels. To those that are still here, we look forward to seeing you at services and events over the next few months. Fortunately, our air conditioning is still working!

In this issue there you will see many requests for donations to help offset the multitude of needs and construction repairs that have begun.

As you know, just when we thought we were starting to make some positive waves at the Synagogue, things go wrong,

A water main breaks, the irrigation system fails, and the Ladies Room had a drain backup making it look like a bomb hit it.

Rather than complain and say "now what", several members of the Board jumped into action and repairs have started to be done.

It doesn't happen overnight, and it comes at a cost.

The cliché "it takes a Village" should be replaced with...."bring in the troops!"

We need your support.

Did you know that most of the Board are taking on 2 and 3 roles?

Do you have an area of expertise that might be beneficial to the Congregation?

Might you want to be a Greeter for Friday night or Shabbat services?

Let us know.

Our Congregation is only as successful as you make it!

Sisterhood is having a Programming Planning meeting on Tuesday, June 10th at 10:00 am to plan for the 2025-2026 year. Got ideas? Is there something you are looking for as an event?

The Observer has started to bring in paid advertisers to offset the cost of printing, mailing, and to save up for a new software platform that will be rolled out this fall. More information to come. This month we welcome

If you know of any business that might want to form a partnership with us, please let me know!!

We will continue to publish the Observer through the summer.

Stay safe, stay cool and keep in touch!

B' Shalom,



Marlene Friedlander, Editor

Questions or comments on this issue?

Send them to editor@bethemethaz.org

From your 1st Vice President!

Have patience with all things, BUT, first of all with yourself! *St Francis de Sales*

Patience, persistence and perspiration make an unbeatable combination for success. *Napoleon Hill.*

Why is patience so important? Because it makes us pay attention: *Paulo Coelho.*

Don't forget that if you have a special milestone coming up, we would love to make it extra special with helping to arrange a Sponsored Kiddush!

Shalom,
Marilyn Hope
Marasha Tikvah

marilyn.newberg@bethemethaz.org

Aliyot (Ritual Committee)

I am always so grateful to everyone who participates in our services with accepting the honor of an Aliyah. Our services are more meaningful with your participation.

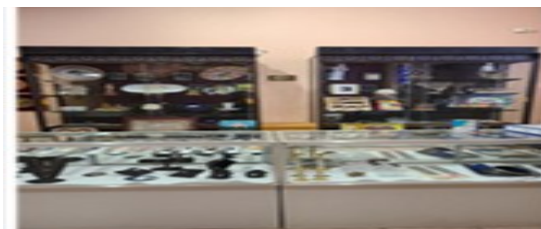
Are you interested in having an Aliyah during the High Holidays? Let me know or leave your name with the Office!!

Reb Lev is also available if you wish to re-chant your Bar/Bat Mitzvah Haftarah or learn to chant Torah or a Haftarah portion.

I look forward to greeting each of you at services!

Natalie Morrison

3rdvicepresident@bethemethaz.org



Greetings from out JUDAICA SHOP!

Don't forget Father's Day is Sunday, June 15!

**We have everything you need for your Shabbat and Gift Giving needs!!! We have
Mezuzoth, Jewelry and
Artwork!
Looking for something
special? Let me know!**

**Stop by anytime Monday– Friday 9:00 am—noon!
Payments accepted by cash,
Credit card, check or Zelle!**

**Susan Hersch, Judaica Shop Manager
financialsecretary@bethemethaz.org**

Treasurer's Corner

- ☆ We have received 90% of the dues payments for this year and need your help to pay our bills and abide by our budget.
- ☆ We have restricted funds such as the Biblical Garden that need your support to accomplish what is needed.
- ☆ We are seeking donations to help cover the estimated \$3,000 needed to inspect and repair our Sefer Torahs.

Do you grocery shop at Fry's? Link your Rewards Card to help support Beth Emeth Congregation!! **YOU WILL NOT LOSE ANY OF YOUR DISCOUNT BENEFITS.**

We accept contributions by cash, check, credit card, or Zelle.
If you have questions, please email me at treasurer@bethemethaz.org.

Brad Friedlander, Treasurer

Treasurer's Financial Update

Our Congregation has restricted funds that allow you to specify how your donation will be used.

- ✧ Biblical Garden: The donation will only be used for the Biblical Garden project. A generous donor will match the first \$5,000 in new donations.
- ✧ Torah Maintenance: The donation will only be used for the inspection and repair of our Torahs.
- ✧ Building Repair: The donation will only be used for costs not covered by insurance to repair the women's bathroom and related damage.
- ✧ Per a request of the Sisterhood, Beth Emeth Congregation will no longer accept payments that combine money for the Sisterhood and the Congregation.
- ✧ This includes dues, events, and donations.
- ✧ Sisterhood will no longer accept credit card payments.
- ✧ The Congregation Zelle account (treasurer@bethemethaz.org) cannot be used for payments to Sisterhood.
- ✧ The Congregation accepts payments and donations via checks, Zelle, cash, and credit cards (which cost us 5% of the amount).
- ✧ Zelle transactions are sent to Treasurer@bethemethaz.org.
- ✧ Questions about Sisterhood payments should be sent directly to:

Sisterhood@bethemethaz.org

For those of you with an IRA, please consider donating using a qualified charitable distribution (QCD). A QCD counts toward the IRA owner's required minimum distribution (RMD) for the year and is not taxable. Please see your financial advisor for details.

Etz Chaim—Our Tree of Life

I invite you to become part of the permanent legacy of our Synagogue. Through the end of the year, “leaves” on our Etz Chaim (Tree of Life) in our Lobby are just **\$99 each!**

“Apples” are only **\$150!**

Buy them for yourself or a loved one!

Or commemorating a special occasion! Let’s fill the Tree!

Happy to discuss with you how to place an order.

Tom Behrendt, President
president@bethemethaz.org or
office@bethemethaz.org



Yahrzeit Plaques

We have many Yahrzeit plaque spaces available on our Sanctuary wall.

Yahrzeit plaques can be purchased in memory of someone who has passed away or be reserved for a future use.

Plaques are \$350 each.

Payment by cash, check, credit card or Zelle!

Please reach out to me for further information.

Arnold “Arnie” Becker, Director
Arnold.becker@bethemethaz.org





Our Biblical Garden

Back in 2006, the Biblical Garden looked like this...lush and beautiful!



Today it looks like this...overgrown and barren.



Updates - Cleaning, trimming and fertilization is underway!! The irrigation system is being repaired. However, we now have barely enough **to continue**.

A generous Anonymous congregant has stepped to match all donations up to \$5000.

So now is a great time to make a donation to the beautification of our property.

Marilyn Newberg, marilyn.newberg@bethemethaz.org



Rita Beth Wach	6/4
Dr. Bernard Rosen	6/6
Lee Shedroff	6/9
Joel Levine	6/10
Enid Cohen	6/14
Natalie Morrison	6/24
Rosemary Abrami	6/26
Rosie Colbert	6/27
Jordan Colbert	6/30



Harvey and Rita Zarensky	6/12
Andrew and Jan Heidecker	6/14



Message from the Sisterhood President 5/22/25

Shavuot is one of the three **Regalim**, Pilgrimage Holidays (Pesach, Shavuot, and Sukkot). Just as our ancestors traveled to the Temple with their "first fruits" we too count our blessings, express our gratitude, and give Tzedakah during Shavuot in appreciation for our bounty. That, and we eat yummy dairy foods:)

I look forward to seeing you at Shavuot Services Monday and Tuesday June 2nd & June 3rd at 9:30 am. Please note that Yizkor will be said in the Tuesday morning service and starts at approximately 10:30 am.

Our June Sisterhood meeting will be held on June 10th at 10:00 am. As it is our last meeting of the 2024-2025 Sisterhood calendar year, which runs in conjunction with Women's League's calendar (July 1-June 30th), and as it follows Shavuot, **there will be ice cream to celebrate a remarkable year of programming! And to plan for the coming year!**

Together with your help we *enjoyed Israeli Dancing, attended the Stand With Israel October 6th Rally, heard a story, did a craft and had lunch in the Sukkah, learned about AZ history at the AZ Monument and Memorial Tour lead by Launa Winegrad, were up lifted by the piano concert by Nicole Pesce held for all new members, hosted Professor Gary Rendsburg for a week of extraordinary shared learning experiences, viewed a photo presentation about synagogues around the world in unexpected places by Dan Fellner, celebrated, ate, and played dreidel at our Chanukah dinner, socialized at Game Day, tasted the 7 Biblical species and gave thanks on Tu B'Shevat, experienced the beauty of Japanese flower arranging during our Ikebana classes with Sue Schmidt, baked & baked & baked for Purim, and joined with Hadassah Tikvah members for our Women's Shabbat, their Tikvah Mother's Day Tea and learning with Hazzan Lev Ettelson.*

In addition, **throughout the year we collected food** for St Mary's Food Bank and Ezras Cholim, the Kosher Kitchen in Phoenix, as well as **sent funds to Israel**. Sisterhood **sponsored** and **augmented** many Saturday morning Kiddushism, **supported** both our **Film Festival** and **Mah Jongg Tournament**, *purchased* needed kitchen items, bought new fry pans and serving trays, as well as **purchased a new projector** for the film festival.

Sisterhood does a lot, and we invite you to join us! Share your ideas, help plan, participate, and have fun in the year ahead.

An extra Big - Big Thank you to Carol Madvig, Stacey McEnnan, Adrienne Kirshner Bittman, Mark Friedman and Arthur Bennett for the handmade jewelry that was used for auctions, and to all who showed up to help setup, cook, bake, and clean up during the events. We could not do this without each of you... I look forward to planning our next year of programs together!!

Ketzi Toney

SISTERHOOD

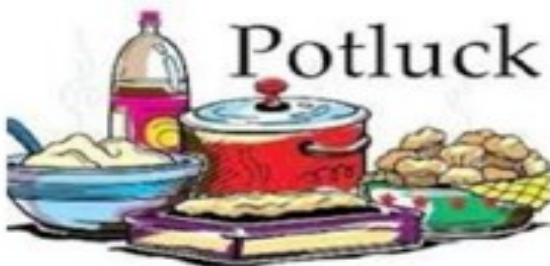


SAVE THE DATE

☆ June 10th will be the next Sisterhood meeting. 10:00 am in the Library. All are encouraged to attend!

- ☆ We will be planning our 2025-2026 year as well as celebrating the end of a very successful year!
- ☆ Sisterhood has contributed over \$11,000 in direct donations, purchases, supporting and catering Kiddushim, and in-kind to the Congregation. A full report will be presented.

Save the Date
Sunday June 22nd



Potluck

Join us for a Sisterhood
Dairy Pot Luck
From 5:00 - 7:00pm
At Ketzi and Jim Toney's
home
23039 N Padaro Ct, SCW
RSVP 425-890-6792

Beth Emeth Congregation of the West Valley
13702 West Meeker Blvd. SCW, AZ 85375



SISTERHOOD MEMBERSHIP FORM

JULY 2025 - JUNE 2026

Congregation Member \$36 per year

Non Members \$46 per year

Includes membership in Women's League of Conservative Judaism

Become a Beth Emeth Member - first year of Sisterhood Membership is Free!

Please complete and submit with your payment

Checks Payable to **Sisterhood** Beth Emeth Congregation

Name _____ DOB _____

Address _____

City _____ Zip Code _____

Cell Phone # _____ Home Phone _____

Email _____ Anniversary Date _____

Emergency Contact _____

Relationship _____ Phone _____

Volunteer tasks I am able to help with check all that apply

___planning organizing ___ kitchen food prep ___set up ___Clean up

___phone calls ___driving car pool ___leading an activity Please Specify

Types of Programs you enjoy attending _____



You're Invited

To become a member of Sisterhood

Beth Emeth Congregation of the West Valley

13702 W Meeker Blvd, SCW, AZ 85375

Sisterhood is affiliated with the Pacific Southwest Region of Women's League for Conservative Judaism (WLCJ). Our calendar year runs from July 1st through June 30th. Our membership drive for the 25-26 year is now underway. Part of your Sisterhood dues covers membership in WLCJ which, in addition to our Sisterhood programing, provides access to a host of webinars, opportunities to study with Scholars, and participate in creative Judaic arts.

*Sisterhood Membership is \$36 per year
for Beth Emeth members*

\$46 per year for non members

*Become a Beth Emeth Member and Sisterhood membership
is waved for the first year!*

*Sisterhood membership is a way to:
connect Jewishly with others, celebrate holidays,
commemorate special moments, learn together,
participate in Mitzvot and Tzedakah projects, contribute, socialize,
make new friends, feel part of a community/extended family
and have fun!*

We hope you will join us!

*Look for our Sisterhood Membership Form and send in your
Membership. We look forward to welcoming you!*

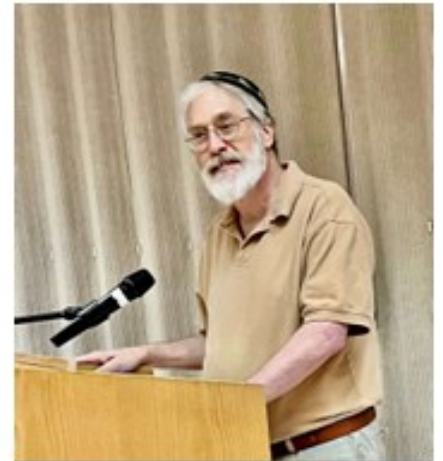
Preparing for The End of Life

Sunday May 18, 2025

Over 20 people attended this informative program lead by Dr. Michael Weinberg and his wife Judy, who together also run our Grief Support Group. Co- presenters were Suzan Giloni, Reva Litt, and Hazzan Lev Ettelson. Participants learned about end of life issues, about forms and paperwork to consider, and were educated on the importance of having a lock box and utilizing the Vial of Life, a container you keep in your refrigerator door which contains your pertinent medical history and medication, critical information for paramedics. The Grief Support Group meets on Tuesdays at 4:00 pm and is free and open to all.



Judy Weinberg, Suzan Giloni, & Reva Litt

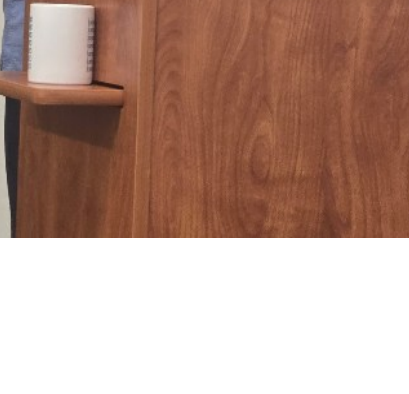


Hazzan Lev Ettelson



Dov Giloni

May 12th Mother's Day Tea Sisterhood with Hadassah Tikvah West Valley



Rise & Shine

and join
Hadassah Tikvah West Valley
for
Breakfast



on
Monday, June 9, 2025
10:00 AM

at
Betty's Rooste
14418 West Meeker Bldg B
Sun City West
Cost-\$5.00

Questions call (414) 899-9202

RESERVATIONS NEED TO BE RECEIVED BY JUNE 3rd

Please fill out this form and enclose it with your check for 5 dollars

Name_____

Check number_____

Email_____

and mail to:

Phyllis Hibben

14146 West White Rock Dr.

Sun City West AZ 85375

HADASSAH



Tikvah West Valley

Here's what's happening at Hadassah Tikvah West Valley!

June 9	Bettys Rooste Brunch
July 14 Congregation)	Horse Racing—Hosted by Natalie Morrison (3rd VP Beth Emeth
August 11	Lunch at Angelas
November 10	Fashion Show at the Colonnade
December 19	Candle Lighting at The Grand and Pot Luck



Advanced Home Watch Services

Advanced Home Watch Services is here as another set of eyes and ears as your trusted advocate while you are away from home. Home Watch is "A visual inspection of a home or property, looking for obvious issues."

Thorough inspections of the interior and exterior of your home are customized to meet your needs. **Advanced Home Watch Services** is insured, bonded, and accredited by the National Home Watch Association.



Patty Knox-Hermann

480-586-1098

patty@AdvancedHomeLuxuryhomes.com

"Watchful Care For When You're Not There"

Grandview Terrace brings new meaning to *Independent Living*

Just steps from their front door, residents have access to a plethora of dining options, a bustling social scene, and a wealth of amenities—all conveniently located under one roof.

In addition, residents receive membership to Sun City West's state-of-the-art recreational center and social amenities, including championship golf courses and dozens of charter clubs. It's another way that **Grandview Terrace** makes it easy to live a healthy and happy life.

Explore Your Options with Confidence

Assess the financial compatibility of **Grandview Terrace** with your retirement plan. Try our simple calculator for an instant, obligation-free estimate.



Call our sales office
at (623) 975-8014
to schedule a tour!

SunHealthCommunities.org/grandview



Camino del Sol

FUNERAL CHAPEL & CREMATION CENTER

At Camino del Sol Funeral Chapel and Cremation Center, it is our mission to meet every need of the families we serve. Family-owned and operated, Camino del Sol is proud to serve the surrounding communities since 1989. You can count on us today, and for generations to come!

(623) 584-6299

www.caminodelsol.com





*May their memories be blessed.
As We remember them...*



The following Yahrzeits will be observed during Shevat.

Kaddish may be said at Friday evening services (6:00 pm), and Saturday morning services (9:30 am)

El Malei Rachamim, the Memorial prayer, may also be said at the Thursday morning Minyan (9:00 am) preceding the Yahrzeit date.

Date	Hebrew Date	Deceased	Observant	Relationship
6/1	Sivan 5	Muriel Rosenberg	Rita Beth Wachs	Mother
6/2	Sivan 6	Hyman Epstein	Rosemary Abrami	Father
6/3	Sivan 7	Jerry Altman	Sonia Altman	Husband
6/4	Sivan 8	Robert Newberg	Marilyn Newberg	Husband
6/10	Sivan 14	Rea Shedroff Feiger	Lee Shedroff	Mother
6/13	Sivan 17	Bernerd Lowenthal	Joy Epstein	Brother
6/14	Sivan 18	Stephen Franek	Susan Hersch	Father
6/14	Sivan 18	Abe Sills	Enid Cohen	Father
6/16	Sivan 20	Phillip Dorman	Paula Forster	Father
6/17	Sivan 21	Barney Shedroff	Lee Shedroff	Father
6/17	Sivan 21	Julia Sontag	Joseph Sontag	Mother
6/18	Sivan 22	Bart J. Gordon	Iris Silverman	Nephew
6/18	Sivan 22	Bessie Lazar	Max Lazar	Mother
6/22	Sivan 26	Seymour Hesch	Morrie Hesch	Brother
6/23	Sivan 27	Norman Freilich	Diane Freilich	Father
6/25	Sivan 29	Abe Epstein	Gail Davis	Grandfather
6/28	Tammuz 2	Sean Goldmark	Gail Davis	Nephew
6/28	Tammuz 2	Bertram Kesten	Sandra Shedroff	Uncle
6/28	Tammuz 2	Sam Salmirs	Brad Friedlander	Grandfather
6/29	Tammuz 3	Harry Lazar	Max Lazar	Father
6/29	Tammuz 3	Elsa Paul	Ronald Paul	Mother

Todah Rabah for your generous support!

Kiddush Fund

Rosemary Abrami

Evelyn Dragiff

Sponsored Kiddush

Saul and Sharon Rothzeit

Lee and Sandra Shedroff

Joel Levine

Ritual Committee

James and Esther Toney

Joy and Peter Epstein

Morrie Hesck

Joanie Jacobs

Ronald Paul

Barry and Claire Maultausch

Observer Advertising

Camino del Sol

Sun Health Senior Living

Yahrzeit Fund

Jack Ezraty
In memory of Victor Ezraty

Ann Goldfarb/Clapp
In memory of Mary Scher

Bernard Rosen
In memory of Norma Rosen

Joan Rothfeld
In memory of Betty Rothfeld

Shelden Koven
In memory of Beverly Casper

Sheldon Koven
In memory of Asha Rifka Moskowitz

Max and Sherry Lazar
In memory of Arthur Dorf

Carol Loewith
In memory of H. Howard Loewith

Member—General Fund

Rosemary Abrami

William Kram and Diane Shapiro

Reva Litt

Sonia Marshall

Beverly Merchant

Ronald Paul

Bronna Hankoff

Lee and Sandra Shedroff

Martha Dalmeida

Nonmember—General Fund

Robert and Barbara Cline

Charles and Marisela Erichsen

Biblical Garden

Rosemary Abrami

Arnold Becker

Sisterhood Beth Emeth

Jordan and Rosie Colbert

Mark and Madelaine Friedman

Natalie Morrison

Marilyn Newberg

Ronald Paul

Gyorgi Rosenthal

Saul and Sharon Rothzeit

Irene Weitzman

Evelyn Dragiff

Lee and Sandra Shedroff

Diane Shapiro

Tree of Life

Sally Anne Hall

Torah Fund

Sisterhood Beth Emeth

Lee and Sandra Shedroff

Yizkor Donations

Ronald Paul

Reflecting donations posted 4/21—5/22

June 2025

Sivan— Tammuz 5785



SUN Jun 1(5)	MON 2 (6)	TUE 3 (7)	WED 4 (8)	THU 5 (9)	FRI 6 (10)	SAT 7 (11)
49th day of the Omer Erev Shavuot ● 7:17pm Candle lighting	Shavuot I ● 8:21pm Candle lighting	Shavuot II ● 4pm Grief Support Group ● 8:21pm Havdalah (45 min)		● 9am Morning minyan ● 11am Torah Class - Reb Lev	● 6pm Friday Night Service ● 7:19pm Candle lighting	Parashat Nasso ● 9:30am Shabbat Service ● 8:23pm Havdalah (45 min)
8 (12)	9 (13)	10 (14) ● 10am Sisterhood Meeting ● 4pm Grief Support Group	11 (15)	12 (16) ● 9am Morning minyan ● 11am Torah Class - Reb Lev	13 (17) ● 6pm Friday Night Service ● 7:22pm Candle lighting	14 (18) Parashat Beha'alotcha ● 9:30am Shabbat Service ● 8:26pm Havdalah (45 min)
15 (19)	16 (20)	17 (21) ● 9:30am Board meeting ● 4pm Grief Support Group	18 (22)	19 (23) ● 9am Morning minyan ● 11am Torah Class - Reb Lev	20 (24) ● 6pm Friday Night Service ● 7:24pm Candle lighting	21 (25) Mevarchim Chodesh Tamuz Parashat Sh'lach ● 9:30am Shabbat Service ● 12pm Birthday Kiddush ● 8:28pm Havdalah (45 min)
22 (26)	23 (27)	24 (28) ● 4pm Grief Support Group	25 (29)	26 (30) Rosh Chodesh Tamuz ● 9am Morning minyan ● 11am Torah Class - Reb Lev	27 (1) Rosh Chodesh Tamuz ● 6pm Friday Night Service ● 7:25pm Candle lighting	28 (2) Parashat Korach ● 9:30am Shabbat Service ● 8:29pm Havdalah (45 min)
29 (3)	30 (4)	Jul 1(5) ● 4pm Grief Support Group	2 (6)	3 (7) ● 9am Morning minyan ● 11am Torah Class - Reb Lev	4 (8) ● 6pm Friday Night Service ● 7:25pm Candle lighting	5 (9) Parashat Chukat ● 9:30am Shabbat Service ● 8:28pm Havdalah (45 min)



Our logo, created by our member, the late Max Gimpel (z"l), is the Shield of David made into a calligraphic Interpretation of the Hebrew letters, Beit Aleph, which signify the name of our Congregation, BETH EMETH, House of Truth.

Beth Emeth Congregation Board

President

1st VP

2nd VP

3rd VP

4th VP

Treasurer

Financial Secretary

Recording Secretary

Corresponding Secretary

Tom Behrendt

Marilyn Newberg

Ketzi Toney

Natalie Morrison

Jordan Colbert

Brad Friedlander

Susan Hersch

Marlene Friedlander

Irene Lehrer

Directors

Arnold Becker

Arthur Bennett

Leah Tarnor

Harvey Zarensky

Marvin Wachs

Sisterhood President

Ketzi Toney