

Beth Emeth Observer

BETH EMETH CONGREGATION OF THE WEST VALLEY



Follow us:  

Hazzan Lev Ettelson
Spiritual Leader & Director of Education

13702 W. Meeker Blvd., Sun City West, AZ 85375
office@bethemethaz.org www.bethemethaz.org
Office hours Mon-Fri - 9 AM - 12 PM (ph) 623-584-7210

Tammuz - Av 5785

July 2025



July 30 - 31. Tisha B' Av is the day of mourning in Judaism. On this day, the ninth of Av, a series of major tragedies of the Jewish people occurred including the destruction of the first and second temples in Jerusalem. It is a day of mourning for getting kicked out of the land of Israel for the destruction of Jerusalem and the Medieval expulsions from various lands. Tisha B'Av was the day it all happened. Sacred sites, entire communities all destroyed, We cry, we mourn, we feel isolated.

Tisha B' Av is a day of mourning when the Jewish people acknowledge that life is not all butterflies and roses and that we have been through serious suffering. It is a day of fasting and in the evening it is common to hear the Book of Eicha, Lamentations read by candlelight.

The time leading to Tisha B'Av is known as the 3 weeks, starting with a fast on the 17th of Tammuz. The spiritual turns of Tisha B' Av prepare us for the biggest turn of the year 7 weeks later when the shofar calls our attention to Rosh Hashanah and the new year.

In this issue

Our Services and Classes	2
President's Message	3
From the Hazzan's Study	4
From the Editor	5
1st VP Message	6
Ritual Committee	6
Judaica Shop	7
Treasurer's update	8
Etz Chaim/Yahrzeit Board	9
Biblical Garden	10
Birthdays/Anniversaries	11
Hadassah Events	12
Sisterhood	13 -19
Advertisement	20
Yahrzeits	21
Donations	22
Calendar	23

Shabbat Candle Lighting June 2025



7/4 — 7:25 pm
7/11 — 7:23 pm
7/18 — 7:21 pm
7/25 — 7:16 pm

Volume 2025—Number 16

Classes are held in our Library

Grief Support Group with Dr. Michael Weinberg and Judith Weinberg, R.N. Tuesdays at 4:00 pm—(no charge— open to all)

Torah Classes: Thursday mornings at 11:00 am - resuming July 17th. (Resuming after Reb Lev returns from vacation.)

Classes are \$5 each for members - \$10 each for nonmembers

Looking forward– Mark your calendars!!

**Sunday, August 24th
Membership Open House**

**Nicole Pesce Fundraiser
September 14, 2025 (tickets go on sale Aug 1)**

**Film Festival 2026
January 24-26, 2026**

**Mah Jongg Tournament
Sunday, March 15, 2026**

High Holiday ticket information coming soon!!!

**Erev Rosh Hashanah — Monday, Sept 22
Rosh Hashanah—Tuesday, Sept 23
2nd Day Rosh Hashanah—Wednesday, Sept 24**

Kol Nidre— Wednesday, October 1



**FROM THE DESK OF TOM BEHRENDT, PRESIDENT
Beth Emeth Congregation of the West Valley**

Shalom!

We hope that you are having a pleasant summer and staying cool and hydrated.

Rev Lev is on a well deserved break and Please contact me in the event that you have a need to speak to a Clergy. I will have them get in touch with You.

At the time of this writing, the Ladies' Bathroom will have been restored with all new commodes and an updated look. We apologize for the delay but needed to get it done right as we encountered some major problems.

The irrigation system has been replaced in the Biblical Garden and by the High Holidays, we hope to have it restored to its previous beauty for your enjoyment and contemplation. This was done by some very generous donations in Memory of our beloved Rhoda Lessner, who will be the namesake going forward.

I had previously written that 303 Lighting is a wonderful friend to Beth Emeth and does quality work for us and will do the same for you for any electrical needs.

I want to add another vendor that has demonstrated exemplary value and friendship to Beth Emeth, Alpha Plumbing! They do great work and offers Beth Emeth members a discount for all your plumbing needs. Call them at 480-709-4862. Daniel is also a Veteran for which we thank him for his service!

Finally, a very special **Thank You** to Arnie Becker. He has headed up the Biblical Garden Project, the Bathroom renovation and Federal Grant programs and in his spare time is the smiling face greeter on Shabbos and Yom Tov. TRULY AMAZING. Thank You from all of us!

Save the Date - Sunday, August 24th for our Membership Drive Open House. Bring your friends who are thinking about joining!

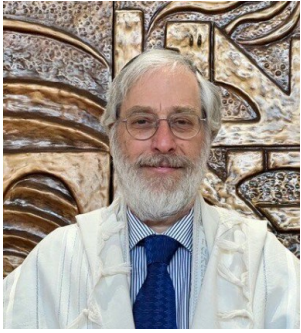
Sisterhood will be bringing the marvelous piano virtuoso Nicole Pesce back to Beth Emeth Congregation on September 14th!! Watch for details.

Watch your email for upcoming events throughout the summer and High Holiday information.

A handwritten signature in blue ink that reads "Tom Behrendt".

Reflections on Torah and Tradition

Hazzan Lev Ettelson



"For everything there is a season and there is a time for everything under the sky. A time to love and a time to hate; a time for war and a time for peace." (Kohelet 3:1; 8)

"Thus, God will judge among the nations, and arbitrate for the many peoples, and they shall beat their swords into plowshares and their spears into pruning hooks: Nation shall not take up sword against nation; They shall never again know war. O House of Jacob! Come, let us walk by the light of God." (Isaiah 2:4-5)

As I write these words, Israel has been at war for 625 days since Hamas invaded Israel in a brutal attack on October 7, 2023, during the holiday of Simchat Torah, killing over 1,200 and kidnapping 250. Fifty hostages, dead and alive, remain in Gaza (amidst a sea of suffering). The strikes on Iran have dealt a devastating blow to a repressive regime, but, their retaliatory attacks have left thousands homeless, hundreds wounded and dozens of dead in Israel.

In the United States, against a backdrop of growing division, instability and political assassinations, we have seen a steep rise in antisemitism. Jews have been the target of terrorist attacks in Pennsylvania, Washington D.C. and Boulder, Colorado. People all over the world are living in a time of fear, uncertainty and environmental devastation.

My heart is heavy with sadness and concern for the future of humanity. As a student of Torah and perennial philosophy, I try (and often fail) to live according to the teachings of Hillel, who said, "be of the disciples of Aaron, loving peace and pursuing peace, loving mankind and drawing them close to the Torah." (Pirkei Avot 1:12)

Even though warfare is sometimes necessary for self-defense, it must be conducted according to the (Torah) law, minimizing civilian casualties (the Ramban asserts that the residents of an area do not deserve death for failure to control the evil actions of their leader as in the case Shimon and Levi murdering all of the men of Shechem); limiting environmental impact: "When in your war against a city you have to besiege it a long time in order to capture it, you must not destroy its trees..." (Deut. 20:19); And not losing sight of the humanity of one's enemy: "If your enemy falls, do not exult; If he trips, let your heart not rejoice, Lest Adonai see it and be displeased..." (Proverbs 17-18)

The late Zen Master, Thich Nhat Hanh worked tirelessly on behalf of his people during the years of war in Viet Nam and its aftermath. He dedicated his life to healing the hearts of his own people as well as American veterans and peace activists. He wrote: "We often think of peace as the absence of war, that if powerful countries would reduce their weapon arsenals, we could have peace. But if we look deeply into the weapons, we see our own minds- our own prejudices, fears and ignorance. Even if we transport all the bombs to the moon, the roots of war and the roots of bombs are still there, in our hearts and minds, and sooner or later we will make new bombs. To work for peace is to uproot war from ourselves and from the hearts of men and women."

May the One who creates peace on high bring peace to us and to all Israel and to all who dwell on earth. Amen.

עֲשֵׂה שָׁלוֹם בְּמִרוֹמָיו, הוּא יַעֲשֶׂה שָׁלוֹם עָלֵינוּ וְעַל כָּל יִשְׂרָאֵל וְעַל כָּל-יְיֹשְׁבֵי תֵבֵל

I will return from vacation on July 16th.

Reb Lev

From the Editor's desk!

Greetings!

At the outset I want to thank everyone who reached out via cards, notes, texts, and calls during my brief physical malady last month. I am grateful for our congregants' kindness.

As we approach the dead of summer we find streets without vehicles, notice stores with very light traffic and our synagogue with fewer participants.

At Beth Emeth Congregation of the West Valley, we don't pack up and leave for cooler climates or vacation. Our doors are still open, we have Sisterhood's robust programs, ongoing construction and renovation, and services are still held on Thursday morning, Friday evening and Saturday morning.

Please help us fill the seats at services to be able to reach a Minyan so that those who need to, can say Kaddish.

Repeating the cliché "it takes a village" is more prevalent now than ever!" We need your support. Your donations and volunteering are very appreciated. Do you have an area of expertise that might be beneficial to the Congregation? Might you want to be a Greeter for Friday night or Shabbat services? Let us know.

Our Congregation is only as successful as you make it!

We will be hosting a **Membership Open House on Sunday, August 24**. If you know of anyone considering joining a synagogue...bring them!

In March, 2026 we will be having our **2nd Annual Mah Jongg Tournament**. If anyone has a **34" square table** that they would considering donating to the Congregation, let us know.

Finally, preparation for the High Holidays is well underway. You should start seeing Ticket information in the near future. We look forward to seeing everyone at these services in September.

B' Shalom,

Marlene Friedlander, Editor

Questions or comments on this issue? Send them to: editor@bethemethaz.org



The Observer is always looking for your tax deductible donations to help defray the cost of printing ! Thank you in advance.

From your 1st Vice President!

Ask and you shall receive.

A few weeks ago, I made an appeal for eggs for the kitchen to be used for the Kiddush on Shabbat.

I was overwhelmed that we received 30 dozen eggs in just a few days.

I know more than ever that I ask for help or donations of food, that our members will step up. Extremely grateful for your continued support.

Don't forget that if you have a special milestone coming up, we would love to make it extra special with helping to arrange a Sponsored Kiddush!

Shalom,
Marilyn Hope
Marasha Tikvah

marilyn.newberg@bethemethaz.org

Aliyot (Ritual Committee)

I am always so grateful to everyone who participates in our services with accepting the honor of an Aliyah. Our services are more meaningful with your participation.

Are you interested in having an Aliyah during the High Holidays? Let me know or leave your name with the Office!!

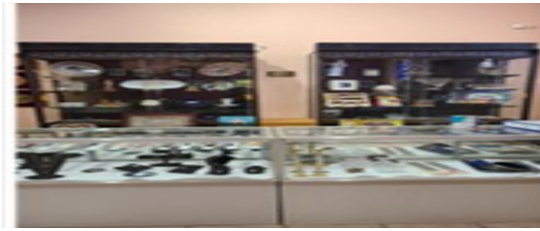
Ticket information for the High Holidays will be coming soon. Watch for updates.

Reb Lev is also available if you wish to re-chant your Bar/Bat Mitzvah Haftarah or learn to chant Torah or a Haftarah portion.

I look forward to greeting each of you at services!

Natalie Morrison

3rdvicepresident@bethemethaz.org



Greetings from out JUDAICA SHOP!

**We have everything you need for your Shabbat and Gift Giving needs!!! We have
Mezuzoth, Jewelry and Artwork!**

**Looking for something special? Let me know!
Stop by anytime Monday– Friday 9:00 am—noon!
Payments accepted by cash,
Credit card, check or Zelle!**

**Susan Hersch, Judaica Shop Manager
financialsecretary@bethemethaz.org**

Treasurer's Corner

**Per a request of Sisterhood, Beth Emeth Congregation will no longer accept payments
that combine money for Sisterhood and the Congregation.**

- ☆ This includes dues, events, and donations.
- ☆ Sisterhood will no longer accept credit card payments.
- ☆ The Congregation Zelle account (treasurer@bethemethaz.org) cannot be used for payments to Sisterhood.

Questions about Sisterhood payments should be sent to Sisterhood@bethemethaz.org or
Ketzi.Toney@bethemethaz.org

**Beth Emeth Congregation accepts payments and donations via checks, Zelle, cash,
and credit cards (which cost us 5% of the amount).**

Please send Zelle payments to: Treasurer@bethemethaz.org.

If you have questions, please email me at treasurer@bethemethaz.org.

Brad Friedlander, Treasurer

Treasurer's Financial Update

Our congregation depends on your financial contributions to enable us to provide the religious services and programs you want. At the Congregation Membership Meeting in January, we approved a budget with some important sources of revenue: Membership (Dues), Fund Raising, and Ritual.

Dues

We request payment of any unpaid dues as soon as possible.

☆ At present, we have a shortfall of \$19,735 in membership dues.

☆ To those who have already paid your pledge, Todah!

☆ For the rest, please make a concerted effort to help us meet our budget.

☆ Note: High Holiday tickets are only available to members in good standing.

Payment Methods

We accept payment in multiple forms, shown in order of preference.

☆ Zelle payment to treasurer@bethemethaz.org

☆ Check

☆ Cash

☆ Credit card: We pay a 5% fee for all credit card transactions, so we only receive \$712.50 of a \$750 payment.

Fund Raising

Our three major fundraising events will not meet the budgeted income of \$16,400.

Film Festival netted over \$7,000.

Mah Jongg tournament netted over \$1,000

Casino Night has been delayed until next year

Your support for these events has been a great help in meeting our budgeted goals.

Donations

Donations can be earmarked for the three restricted funds that need our attention.

☆ Biblical Garden Fund. A generous donor will match the first \$5,000 in new donations.

☆ Torah Maintenance Fund

☆ Bathroom Repair

Your Ritual donations for Aliyot, Yahrzeits, and other life-cycle events are an important part of our income.

Financial Status

As of June 24th, we have had \$177,572.87 in income and \$119,048.67 in expenses.

Our Congregation's restricted funds allow you to specify how your donation will be used.

☆ Biblical Garden: The donation will only be used for the Biblical Garden project. Torah Maintenance: The donation will only be used for the inspection and repair of our Torahs.

☆ Building Repair: The donation will only be used for costs not covered by insurance to repair the women's bathroom and related damage.

For those of you with an IRA, please consider donating using a qualified charitable distribution (QCD).

Etz Chaim—Our Tree of Life

I invite you to become part of the permanent legacy of our Synagogue. Through the end of the year, “leaves” on our Etz Chaim (Tree of Life) in our Lobby are just **\$99 each!**

“Apples” are only **\$150!**

Buy them for yourself or a loved one!

Or commemorating a special occasion! Let’s fill the Tree!

Happy to discuss with you how to place an order.

Tom Behrendt, President
president@bethemethaz.org or
office@bethemethaz.org



Yahrzeit Plaques

We have many Yahrzeit plaque spaces available on our Sanctuary wall.

Yahrzeit plaques can be purchased in memory of someone who has passed away or be reserved for a future use.

Plaques are \$350 each.

Payment by cash, check, credit card or Zelle!

Please reach out to me for further information.

Arnold “Arnie” Becker, Director
Arnold.becker@bethemethaz.org





Our Biblical Garden

Back in 2006, the Biblical Garden looked like this...lush and beautiful!



Today it looks like this...overgrown and barren.



Updates - Cleaning, trimming and fertilization is underway!! The irrigation system is being repaired. However, we now have barely enough **to continue**.

A generous Anonymous congregant has stepped to match all donations up to \$5000. So far we have raised \$3000 towards the \$5000.

So now is a great time to make a donation to the beautification of our property.

Marilyn Newberg, marilyn.newberg@bethemethaz.org



Alice Bernstein	7/3
Gyorgyi Rosenthal	7/4
Joseph Sontag	7/6
Dr Mindy Beth Lipson	7/8
Sherry Lazar	7/12
Gary Cohen	7/15
Reva Litt	7/16
Jamie Rothschild	7/19
Michael Madvig	7/20
Jim Frank	7/22
Iris Silverman	7/27
Lael Summer	7/27



Leah & Charlie Tarnor	7/4
Dov & Suzan Giloni	7/17



Continental Breakfast and Horse Racing Game

Tikvah-West Valley Hadassah invites you to join us for a continental breakfast and horse racing game.

Monday, July 14, 2025
10:00 am to 12:30 pm

Registration: \$36

Please bring 2 rolls of nickels

Register here:

events.hadassah.org/BreakfastandHorseRacing

Address provided upon registration

Questions? Please contact Natalie Morrison at nat24morrison@cox.net

In accordance with IRS tax laws, only the amount of your gift that exceeds the value of goods and services received in consideration of your gift is tax deductible as a charitable contribution for Federal income tax purposes. The amount of the individual ticket to the event that is tax deductible is \$32. Charitable deductions are allowed to the extent provided by law, please consult with your personal tax advisor. Hadassah shall have full dominion, control, and discretion over all gifts (and shall be under no legal obligation to transfer any portion of a gift to or for the use or benefit of any other entity or organization).



Message from Sisterhood President July 2025

My prayers go out to the brave men and women of the Israeli military, to the first responders and medical professionals, the volunteers from multiple organizations, and to the citizens of Israel. May HaShem guide the leaders and advisors and crown their efforts with continued success, grant strength and endurance to all those working so tirelessly to attend to the needs of individuals dealing with loss and destruction.

May each of us find a way to stand with Israel. There are so many ways to do so: Buying Israel Bonds, donating to any of a number of worth while organizations that directly help Israel, educate yourself about facts from Jewish sources, (ILTV comes directly from Israel and it is in English), urge politicians to support Israel and provide needed assistance, do Jewish...join Jewish organizations, learn about our rich tradition, take on a Mitzvah, and beseech HaShem in prayer, either your own words or prayers from our prayer books. Together we are stronger. Now more than ever, let's stand together!

Am Yisrael Chai!

July marks the beginning of Sisterhood's new calendar year. Membership forms can be found with in the Observer and on our web site bethemethaz.org along with fliers about upcoming events. Payment for dues and or events may be made by cash, **checks payable to Sisterhood**, or by Zelle to Sisterhoodbec1@gmail.com. Please note that forms and or RSVP's must be completed and sent in when using Zelle payments.

Sisterhood membership is a way to feed your Jewish soul. We have sponsored learning opportunities, celebrated Jewish Holidays together, celebrated Shabbat with Hadassah women, and came to gather to socialize just as women and collectively with the community at large. In addition to supporting the congregation with special financial needs, we have sent funds to California following the fires, to Ezras Cholim the Kosher Food Bank, to St. Marry's Food Bank, and sent funds to Israel several times during the year.

Sisterhood is an affiliate of Women's League for Conservative Judaism and as such we also raise funds for Women's League's Torah Fund, which supplies scholarships to individuals studying to become rabbis and cantors, thus insuring the next generation of spiritual leadership. To raise funds we are now sending Tribute Cards for a minimum donation of \$5 per card (See flier).

Please save the date **Sunday September 14th** for a Sisterhood major fund raiser to help support our programing and charitable efforts. Nicole Pesce will be performing . Tickets will go on sale August 1st watch for more information to come.

I want to thank all those that have helped to make this past year's programing possible! I look forward to an exciting year ahead. I Hope you will join us.

Ketzi Toney, Sisterhood President



You're Invited

To become a member of Sisterhood

Beth Emeth Congregation of the West Valley

13702 W Meeker Blvd, SCW, AZ 85375

Sisterhood is affiliated with the Pacific Southwest Region of Women's League for Conservative Judaism (WLCJ). Our calendar year runs from July 1st through June 30th. Our membership drive for the 25-26 year is now underway. Part of your Sisterhood dues covers membership in WLCJ which, in addition to our Sisterhood programing, provides access to a host of webinars, opportunities to study with Scholars, and participate in creative Judaic arts.

*Sisterhood Membership is \$36 per year
for Beth Emeth members*

\$46 per year for non members

*Become a Beth Emeth Member and Sisterhood membership
is waved for the first year!*

*Sisterhood membership is a way to:
connect Jewishly with others, celebrate holidays,
commemorate special moments, learn together,
participate in Mitzvot and Tzedakah projects, contribute, socialize,
make new friends, feel part of a community/extended family
and have fun!*

We hope you will join us!

*Look for our Sisterhood Membership Form and send in your
Membership. We look forward to welcoming you!*

Beth Emeth Congregation of the West Valley
13702 West Meeker Blvd. SCW, AZ 85375



SISTERHOOD MEMBERSHIP FORM
JULY 2025 - JUNE 2026

Congregation Member \$36 per year

Non Members \$46 per year

Includes membership in Women's League of Conservative Judaism

Become a Beth Emeth Member - first year of Sisterhood Membership is Free!

Please complete and submit with your payment

Checks Payable to **Sisterhood** Beth Emeth Congregation

Name _____ DOB _____

Address _____

City _____ Zip Code _____

Cell Phone # _____ Home Phone _____

Email _____ Anniversary Date _____

Emergency Contact _____

Relationship _____ Phone _____

Volunteer tasks I am able to help with check all that apply

___planning organizing ___ kitchen food prep ___set up ___Clean up

___phone calls ___driving car pool ___leading an activity Please Specify

Types of Programs you enjoy attending _____



SISTERHOOD

BETH EMETH CONGREGATION

13702 West Meeker Blvd

Sun City West AZ 85375

623-58407210

Join Us For a Fun Afternoon of
Jewish/Yiddish Word Bingo

Sunday July 20th

From 2:00-4:00 pm

Cost \$5 per person

B	I	N	G	O
Oy Vey	Mazel	Gelt	Bris	Shmaltz
Shmatte	Shivah	Chasid	Frum	Shmo
Shmeer	Fress	Sheytl	Shiksa	Boychick
Shmutz	Shtunk	Mench	G'Vault	Chutzpa

LAUGH

LEARN

NOSH

Everyone Welcome

Pay by Cash, Checks payable to **Sisterhood**

Or by Zelle to **sisterhoodbec1@gmail.com**

Light Refreshments

RSVP Required

623-584-7210

M-F 9:00 - noon



Mark Your Calendars
Save the Dates

August 17th
Challah Bake

September 14th
Nicole Pesce Concert

October 12th
**Sisterhood Lunch in the
Sukkah**

**Watch for more
information to come!**

**You don't want to miss
These events!**

SISTERHOOD



We are Women's League

Engaging, Enriching and Empowering Jewish Women
Women's League for Conservative Judaism

Beth Emeth Congregation of the West Valley
13702 W Meeker Blvd, SCW AZ 85375 623-584-7210 M-F 9:00am - noon

Sisterhood Now Offering Tribute Cards Minimum donation \$5 per card

Top Two Cards Are for Donations To Sisterhood

All Other Cards Are for Donations To Torah Fund

TRIBUTE CARDS FOR ALL OCCASIONS
MINIMUM DONATION OF \$5
Cash, Checks to Sisterhood or
Zelle to sisterhoodbec1@gmail.com
Office hours M-F 9-noon 623-584-7210
13702 W Meeker Blvd, SCW AZ 85275

In Memoriam

Welcome to the World

In Friendship

MAZAL TOV

Get Well

Buy & Send Your Own Cards
Minimum 5 Cards for \$15

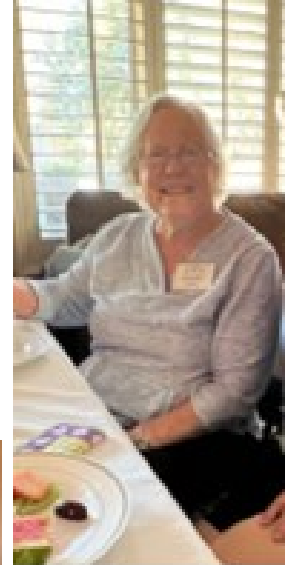
Money from Get Well and In Memoriam cards go directly to Sisterhood.

All other cards go to Women's League's Torah Fund, which provides scholarships to individuals studying to be rabbis & cantors.

Buy & send your own cards
Min. 5 cards for \$15 donation
Make checks payable to **Sisterhood**

On Sunday, June
22nd over 20
women gathered
to eat, laugh and
connect!

A great time was
had by all!



Grandview Terrace brings new meaning to *Independent Living*

Just steps from their front door, residents have access to a plethora of dining options, a bustling social scene, and a wealth of amenities—all conveniently located under one roof.

In addition, residents receive membership to Sun City West's state-of-the-art recreational center and social amenities, including championship golf courses and dozens of charter clubs. It's another way that **Grandview Terrace** makes it easy to live a healthy and happy life.

Explore Your Options with Confidence

Assess the financial compatibility of **Grandview Terrace** with your retirement plan. Try our simple calculator for an instant, obligation-free estimate.



Call our sales office
at (623) 975-8014
to schedule a tour!

SunHealthCommunities.org/grandview



Camino del Sol

FUNERAL CHAPEL & CREMATION CENTER

At Camino del Sol Funeral Chapel and Cremation Center, it is our mission to meet every need of the families we serve. Family-owned and operated, Camino del Sol is proud to serve the surrounding communities since 1989. You can count on us today, and for generations to come!

(623) 584-6299

www.caminodelsol.com





*May their memories be blessed.
As We remember them...*



The following Yahrzeits will be observed during Shevat.

Kaddish may be said at Friday evening services (6:00 pm), and Saturday morning services (9:30 am)

El Malei Rachamim, the Memorial prayer, may also be said at the Thursday morning Minyan (9:00 am) preceding the Yahrzeit date.

Date	Hebrew Date	Deceased	Observant	Relationship
7/1	Tammuz 5	Ethel Zimmerman	Arnold Becker	Mother in law
7/2	Tammuz 6	George Tarasuk	Diane Freilich	Friend
7/7	Tammuz 11	Adele Friedlander	Brad Friedlander	Mother
7/12	Tammuz 16	Ben Lowenthal	Joy Epstein	Father
7/14	Tammuz 18	Harold Lessner	Marilyn Newberg	Bother in law
7/15	Tammuz 19	Irving Scher	Ann Goldfarb/Clapp	Father
7/16	Tammuz 20	Ben-Yosef Israel	Shoshana Perlmutter	Father
7/18	Tammuz 22	Molly D. Merchant	Beverly Merchant	Mother-in-law
7/29	Av 4	Murray Bernstein	Alice Bernstein	Father-in-law
7/29	Av 4	Eli Witt	Natalie Morrison	Father
7/30	Av 5	Hanna Behrendt	Tom Behrendt	Mother
7/30	Av 5	Linda Goldmark	Gail Davis	Sister
7/30	Av 5	Morris Silverman	Iris Silverman	Father

Todah Rabah for your generous support!

<u>Donation In-Kind</u>	<u>Yahrzeit Fund</u>	<u>Biblical Garden</u>
Brad and Marlene Friedlander	Gary and Enid Cohen In memory of Abe Slls	Arnold Becker
	Ronald Paul In memory of Elsa Paul	Arthur and Barbara Bennett
<u>Memorial Plaque</u>	Leah and Charlie Tarnor In memory of Ruth Tarnor	Susan Hersch
Morrie Hesch	Marvin and Rita Wachs In memory of Muriel Sallman	William Kram and Diane Shapiro
	Sonia Altman In memory of Jerry Altman	Natalie Morrison
<u>Yizkor Donations</u>	Joy and Peter Epstein In memory of Bernard Lowenthal In memory Marc Lowenthal	Leah and Charlie Tarnor
Tom Behrendt	Brad and Marlene Friedlander In memory of Ellen Glazer In memory of Sam Salmirs	Sonia Altman
<u>Ritual Committee</u>	<u>Member—General Fund</u>	<u>Minionaire Donations</u>
James and Esther Toney	Joan Rothfeld	Minionaires
Brad and Marlene Friedlander	Rosie and Jordan Colbert	
Natalie Morrison	Sally Anne Hall	
Steven and Janice Rothschild		
<u>Sponsored Kiddush</u>	<u>Torah Fund</u>	
Gyorgyi Rosenthal	Harvey and Rita Zarensky Joan Rothfeld	

July 2025

Tammuz - Av 5785



SUN 29 (3)	MON 30 (4)	TUE Jul 1(5)	WED 2 (6)	THU 3 (7)	FRI 4 (8)	SAT 5 (9)
		● 4pm Grief Support Group		● 9am Morning minyan	● 6pm Friday Night Service ● 7:25pm Candle lighting	Parashat Chukat ● 9:30am Shabbat Service ● 8:28pm Havdalah (45 min)
6 (10)	7 (11)	8 (12) ● 10am Sisterhood Meeting ● 4pm Grief Support Group	9 (13)	10 (14) ● 9am Morning minyan	11 (15) ● 6pm Friday Night Service ● 7:23pm Candle lighting	12 (16) Parashat Balak ● 9:30am Shabbat Service ● 8:27pm Havdalah (45 min)
13 (17) Tzom Tammuz ● 4:01am Fast begins ● 8:16pm Fast ends	14 (18)	15 (19) ● 9:30am Board meeting ● 4pm Grief Support Group	16 (20)	17 (21) ● 9am Morning minyan ● 11am Torah Class - Reb Lev	18 (22) ● 6pm Friday Night Service ● 7:20pm Candle lighting	19 (23) Mevarchim Chodesh Av Parashat Pinchas ● 9:30am Shabbat Service ● 12pm Birthday Kiddush ● 8:23pm Havdalah (45 min)
20 (24)	21 (25)	22 (26) ● 4pm Grief Support Group	23 (27)	24 (28) ● 9am Morning minyan ● 11am Torah Class - Reb Lev	25 (29) ● 6pm Friday Night Service ● 7:16pm Candle lighting	26 (1) Parashat Matot-Masei Rosh Chodesh Av ● 9:30am Shabbat Service ● 8:19pm Havdalah (45 min)
27 (2)	28 (3)	29 (4) ● 4pm Grief Support Group	30 (5)	31 (6) ● 9am Morning minyan ● 11am Torah Class - Reb Lev	Aug 1(7) ● 6pm Friday Night Service ● 7:11pm Candle lighting	2 (8) Erev Tish'a B'Av Parashat Devarim Shabbat Chazon ● 9:30am Shabbat Service



Our logo, created by our member, the late Max Gimpel (z"l), is the Shield of David made into a calligraphic Interpretation of the Hebrew letters, Beit Aleph, which signify the name of our Congregation, BETH EMETH, House of Truth.

Beth Emeth Congregation Board

President	Tom Behrendt
1st VP	Marilyn Newberg
3rd VP	Natalie Morrison
4th VP	Jordan Colbert
Treasurer	Brad Friedlander
Financial Secretary	Susan Hersch
Recording Secretary	Marlene Friedlander
Corresponding Secretary	Irene Lehrer

Directors

Arnold Becker
Arthur Bennett
Leah Tarnor
Harvey Zarensky
Marvin Wachs

Sisterhood President

Ketzi Toney