

Beth Emeth Observer

BETH EMETH CONGREGATION OF THE WEST VALLEY



Follow us:  

Hazzan Lev Ettelson

Spiritual Leader & Director of Education

13702 W. Meeker Blvd., Sun City West, AZ 85375

office@bethemethaz.org www.bethemethaz.org

Office hours Mon-Fri - 9 AM - 12 PM (ph)623-584-7210

Tevet 5785

February 2025

Tu B' Shevat

A time of ecological awareness and a time to plant trees.



In this issue

Our Services and Classes	2
President's Message	3
From the Rabbi's Study	4
From the Editor	5
Member Spotlight	6
Kiddush Committee	7
Ritual Committee	7
Judaica Shop	8
Treasurer	8
Etz Chaim/Yahrzeit Board	9
Birthdays/Anniversaries	10
Sisterhood	11 -18
Mah Jongg Tournament	19
Biblical Garden	20
Yahrzeits	21
Donations	22
Calendar	23

Shabbat Candle Lighting February 2025



2/07	5:48 pm
2/14	5:55 pm
2/21	6:01 pm
2/28	6:07 pm

Volume 2025—Number 11

Classes are held in our Library

Grief Support Group with Dr. Michael Weinberg and Judith Weinberg, R.N. Tuesdays at 4:00 pm

Torah Classes: Thursday mornings at 11:00 am

Current Events: Every other Thursday at 3:00 pm - 4:30 pm

Hebrew for Beginners with Don Stevens – Wednesdays at 2:00 pm

Classes are \$5 each for members- \$10 each for nonmembers

**We welcome you to join us
at all of our services!**

Weekly Service Schedule

- * Thursday morning Minyan begins at 9 am in the library.
- * If you are coming to say Kaddish please call the office to let us know so we can insure we have at least 10 present as attendance varies week to week. 623-584-7210.
- * Friday Kabbalat Shabbat services begin at 6:00 pm.
- * Shabbat Morning Services begin at 9:30 am on Saturday.



**FROM THE DESK OF TOM BEHRENDT, PRESIDENT
Beth Emeth Congregation of the West Valley**

The Board would like to thank the Congregation for the vote of confidence in supporting the 2025 budget and approving the \$50.00 increase in dues. In order to sustain the Synagogue going forward, we need to attract new Members. Please bring a friend or a neighbor to services to events to show how warm and welcoming we are at Beth Emeth Congregation.

We really need more members to attend Thursday morning Minyans and Friday night Kabbalat Shabbat Services. Your fellow members rely on us to make a Minyan (a quorum of 10) for anyone to be able to recite Kaddish in memory of a loved one. One hour of your time would make a huge difference and it would be a big Mitzvah for you.

Misha's Kosher Food located at 814 E Union Hills Dr (7th St & Union Hills) has a wonderful selection of Kosher foods and delicatessen items. As Beth Emeth Congregation members, they are offering a 10% discount whether you buy smoked whitefish, cold cuts, or any one of their excellent Kosher delicacies. Please support this wonderful Kosher market!

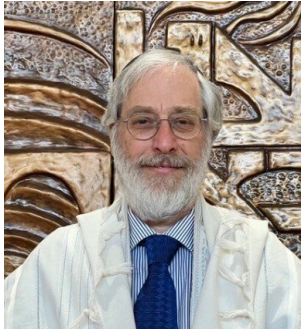
As you prepare your taxes for 2024, please discuss with your financial advisor how you can donate to Beth Emeth Congregation to MAXIMIZE your deductions as we are a 501(3)c institution Thank You!!

A handwritten signature in blue ink that reads "Tom Behrendt". The signature is written in a cursive style.

Your tax deductible donations will ensure the continued success of Beth Emeth Congregation of the West Valley.

Reflections on Torah and Tradition

Hazzan Lev Ettelson



Recently, we began Sefer Shemot (Exodus) the second of the Five Books of Moses. Bereishit (Genesis) is primarily concerned with the formation of families and the conflicts which arise between spouses and siblings. By the end of Bereishit, we see the establishment of the twelve tribes as the Children of Israel settle in the land of Goshen, seemingly safe and content. In the background, however, is the prophecy received by Abraham that this was the beginning of hundreds of years of oppression.

Thanks to the courage, strength, compassion and wisdom of five women - Yocheved, Miryam, Batya, Shifra and Puah - Moses survives Pharaoh's decree of infanticide and grows up in the palace of the most powerful empire in the world. If he just "went along with the program", he would have risen to a position of power and wealth. His empathy for his people who were being subjugated by Pharaoh, compelled him to act in a way which led to his becoming a refugee.

While sojourning in the wilderness of Midian, he entered into a new apprenticeship under the guidance of his father-in-law Yitro (Jethro) for a period of forty years. It is here, at Mt. Sinai (Horeb) that he has an encounter with the Most High which will transform his life completely. Humbled by his revelatory experience at the burning bush, he asks the two questions which we all must ask ourselves, "Who are you?" And "Who am I?" To the first question, he hears the name *Ehyeh Asher Ehyeh* which can be understood as "that which is, will be." When he is charged with his mission to save his people from bondage, he is overwhelmed with the immensity of this task and uncertainty in his ability to respond.

As I write these words, we are witnessing the beginning of the return of the hostages who were held in Gaza for over 470 days. Roni Gonen, Emily Damari and Doran Steinbrecher, having endured the unendurable, are the first to come home to their loved ones. The horrors which this war has wrought, is difficult to comprehend. How do we respond in the midst of such tremendous suffering? Moses' attention was drawn to the light in the burning bush and he felt the presence of the Shechinah. He heard the deepest voice of wisdom and compassion, receiving the guidance that he needed, to step forward to become a vehicle of liberation and healing.

There is a teaching in our mystical tradition that Moses is a *Neshama Klali*, a collective soul containing all of the souls of Israel. Each one of us has that spark of Moses within us which is a clear channel to *Ehyeh*, pure being. Each one of us has the potential to awaken to that light of wisdom and compassion within. Mother Teresa once said, "Not all of us can do great things, but we can do small things with great love." Every act of kindness, every mitzvah, brings another ray of light into this seemingly dark world, restoring hope for a brighter day which the prophetic voice calls forth in every generation.

Reb Lev

From the Editor's desk!

Tu B' Shevat

Tu B 'Shevat is the new year for planting trees.

This day marks the season in which the earliest-blooming trees in the Land of Israel emerge from their winter sleep and begin a new cycle of bearing fruit.

We mark the 15th of Shevat by eating fruit, particularly from the kinds that are singled out by the Torah in its praise of the bounty of the Holy Land: grapes, figs, pomegranates, olives and dates. On this day we remember that "man is a tree of the field" (Deuteronomy 20:19), and reflect on the lessons we can derive from our botanical analogue.

Just think of all of the trees destroyed in the Los Angeles fires or closer to home with the Horton fire, it takes years for a single tree to grow.

In our own backyard, the Biblical Garden is in dire need of replanting. An effort is underway to refurbish the Biblical Garden under the guidance of our 1st Vice President, Marilyn Newberg and our Director, Arnold Becker.

As someone who loves plants and gardening, I encourage everyone to join me in giving their support to this beneficial endeavor to our Synagogue.

B' Shalom,



Marlene Friedlander, Editor

**Questions or comments on this issue?
Send them to editor@bethemethaz.org**

The Observer is always looking for tax deductible donations to help defray the cost of printing and mailing to those without email! Thank you in advance.

Member Spotlight

Evelyn Dragiff



Evelyn Dragiff, one of our newest members of Beth Emeth Congregation, will be **97 years young** in March, yet she regularly signs up to help and always with a smile! “Volunteering keeps me going. I have always tried to get involved. Volunteering helps me feel connected, an opportunity to make new friends, and giving to my community.” **She is truly an inspiration!**

She is pictured here helping bake for the Sisterhood Purim Hamantaschen Fundraiser in which Sisterhood women bake over **2,500 Hamantaschen**. The secret ingredient that makes these pastries so delicious is the love they are made with, for they are a labor of love! Look for volunteering information and the Hamantaschen Ordering Form in this issue!

From your Kiddush Committee!

This is your opportunity to make our Kitchen Committee/ Kiddush Fund a success! Donations to the Kiddush Fund are always welcomed!

Think of sponsoring a Kiddush for a birthday or anniversary or co-sponsoring with a friend! I can help you with ideas for your special Kiddush! **Minimum donation of \$220.**

If you are interested in helping in the kitchen or in sponsoring a Kiddush? Please contact me via the Synagogue office.

February 8— Kiddush sponsored by Stephen and Janice Rothschild

February 22—Kiddush sponsored by Andrea and Bruce Cohen, and Rita and Marvin Wachs, and Marilyn Newberg

All my best!!

Marasha Tikvah (Marilyn Newberg)

marilyn.newberg@bethemethaz.org

Aliyot (Ritual Committee)

I am always so grateful to everyone who participates in our services with accepting the honor of an Aliyah. Our services are more meaningful with your participation.

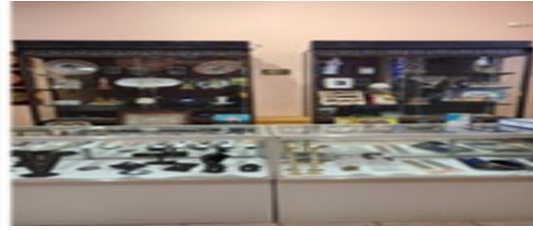
Are you interested in learning about the Aliyot? When to go up to the Bimah or Ark? What to do? Where to stand? When to go back to your seat? We are planning on having a class in the near future! Let me know if you are interested!!

Reb Lev is also available if you wish to participate by learning how to chant a Torah or Haftarah portion.

I look forward to greeting you at services!

Natalie Morrison

3rdvicepresident@bethemethaz.org



Greetings from out JUDAICA SHOP!

We have everything you need for gift giving and your Shabbat and Passover needs!!! We have Mezuzoth, Shabbat candles, Yahrzeit Candles, Seder plates, Haggadahs and Artwork!

Looking for something special? Let me know!

**Stop by anytime Monday– Friday 9:00 am—noon!
Payments accepted by cash,
Credit card, check or Zelle!**

**Susan Hersch, Judaica Shop Manager
financialsecretary@bethemethaz.org**

From your Treasurer

There are many ways you can contribute to our Synagogue!

- 1. Grocery shopping at Fry's.** Linking your Fry's Rewards card will benefit the Synagogue and not impact your rewards! **So far 14 families are participating!**
- 2. Donating to our Biblical Garden—**contact Marilyn Newberg and Arnold Becker
- 3. Sponsoring a Kiddush—**contact Marilyn Newberg, 1st Vice President
- 4. Sponsoring an Event—**contact our President or our Sisterhood President
- 5. Sponsoring our Arizona Rangers** for Shabbat services or events—contact our President
- 6. Buying a leaf on our Etz Chaim in our Lobby—**contact our President
- 7. Remembering a loved one by purchasing a Yahrzeit plaque—**contact Arnold Becker

We accept contributions by cash, check, credit card, or Zelle.
If you have questions, please email me at treasurer@bethemethaz.org.

Brad Friedlander, Treasurer

Etz Chaim—Our Tree of Life

I invite you to become part of the permanent legacy of our Synagogue. Through the end of the year, “leaves” on our Etz Chaim (Tree of Life) in our Lobby are only **\$99 each!**

“Apples” are only **\$150!**

Buy them for yourself or a loved one!
Or commemorating a special occasion!

Happy to discuss with you how to place an order.

Tom Behrendt, President
president@bethemethaz.org or
office@bethemethaz.org



Yahrzeit Plaques

We have many Yahrzeit plaque spaces available on our Sanctuary wall. Yahrzeit plaques can be purchased in memory of someone who has passed away or be reserved for a future use.

Plaques are \$350 each.

Payment by cash, check, credit card or Zelle!

Please reach out to me for further information.

Arnold “Arnie” Becker, Director
Arnold.becker@bethemethaz.org



February Simchas



Steven Rothschild	2/3
Esther (Ketzi) Toney	2/7
Gail Davis	2/8
Phyllis Frank	2/10
Rita Zarensky	2/14
Andrea Cohen	2/20
Arnold Becker	2/22
Brad Friedlander	2/23
Peter Epstein	2/24
Iris Kingman-Johnson	2/27



Iris Kingman-Johnson and husband Neil	2/2
Rita Pomerance and husband Allen	2/14
Jordan and Rosie Colbert	2/27

Beth Emeth Congregation of the West Valley

13702 West Meeker Blvd. SCW, AZ 85375



SISTERHOOD MEMBERSHIP FORM
July 2024-June 2025

Congregational Member \$36 per year

Non Members \$46 per year

Includes membership in Women's League of Conservative Judaism

Please complete and submit with your payment
Checks Payable to Sisterhood Beth Emeth Congregation

Name _____ DOB _____

Address _____

City _____

Zip Code _____

Cell Phone # _____

Home Phone _____

Email _____

Anniversary Date _____

Emergency Contact _____

Relationship _____ phone number _____

Volunteer tasks I am able to help with check all that apply

kitchen food prep planning organizing set up clean up phone calls

sending cards driving for car pool leading an activity please specify

Types of Programs you enjoy attending: _____



Chanukah 2024 A Big Success



December 29th, 2024, 70 people attended our Chanukah Party, including two children...We all had so much fun! The evening started with a brief service, a story, singing, and a trivia game, followed by candle lighting, and a yummy dinner of baked salmon, salad, fresh baked challah rolls, green beans, latkes with all the trimmings, and desserts. After dinner we all played dreidel for pennies, well one table pulled out the cash to play with...some serious dreidel playing at that table! We also had a raffle to raise funds to send to Israel.



Thank you to everyone who helped shop, cook, bake, set up, and Clean up! A program of this magnitude requires a lot of workers. Todah Rabah. To view more photos visit our web site bethemethaz.org



Game Day January 19, 2025 A Big Success



Thank you Suzan Giloni for Chairing the program, seen here teaching Mexican Train.

Over 40 people turned out to enjoy multiple games: Mah Jongg, Pan, Bunco, Mexican train, and Horse Racing. Everyone had a great time! There were yummy snacks, a raffle that raised \$54 for Israel, two winners that each received \$27, plus many door prizes.



Thank you Natalie Morrison for leading Horse Racing, and not pictured, Thank you Irene Lehrer for leading Bunco!





Beth Emeth Congregation of the West Valley
13702 W Meeker Blvd. Sun City West, AZ 85375
623-584-7210



**Join us for Ikebana,
the ancient Japanese art
of flower arranging, for
an in depth learning
opportunity**



**Sue Schmidt of the
Ikebana International, Sun Cities and
Greater Phoenix Chapter 167
will be teaching a 4 session series
Monday February 3rd, 10th , 24th and
Monday March 3rd
from
10:00 am to Noon.
Each session includes two 50 minute
classes and short break between classes.**



Total Cost for all 8 classes (2 per 4 sessions) includes the **incredibly low instruction fee of only \$5 per class, all materials, and flowers for only \$135**

Only 2 spaces left, Reserve your slot now!

Call 623-584-7210

M-F 9:00am to noon

Make checks payable to **Sisterhood Beth Emeth Congregation**

Dont miss this incredible opportunity!



Sisterhood Hamantaschen Baking Days in February



Never made hamantaschen before and want to learn? We will teach you..there are lots of jobs to do as making Hamantaschen are time and labor intensive...Comfortable just helping with one step or them all, everyone is welcome to come and help/learn..These are work sessions to help us complete our goal of baking 2,500 for our Purim Hamantaschen Bake Sale.

Be sure to order yours especially if you are not a baker. The secret ingredient that makes our Hamantaschen so delicious is the love they are made with!

Support our Bake Sale, Look for our order form.

**If you plan to help please let us know the day/days you plan to help, call Ketzi 425-890-6792 or email her at ketzitoney@mac.com so if there is a cancellation or change of time on a specific day we can let you know.

February Dates

Sunday Feb 2nd make dough
Feb 16th make dough
Feb 23rd make dough

**Sunday baking times!
11:00 am—1:00 pm**

Monday February 3rd bake 1-4

Wed Feb 5th 1-4

Thursday Feb 5th 10:30-12:30

Wed Feb 19th 1-4

Thursday Feb 20th 10:30-12:30

Wed Feb 26th 1-4

Thursday Feb 27th 10:30-12:30

Thank you all

Beth Emeth Congregation, 13702 W Meeker Blvd, Sun City West ,AZ. 85375



**You are invited to join us
As we celebrate
Tu B'Shevat**



**Thursday February 13th
4:00 -5:30 pm**
Program is Free and open to All
Hosted by Hazzan Ettelson in memory of his mother & by Sisterhood
RSVP is Required by Tuesday Feb 11th at noon
623-584-7210

Celebrate the Birthday of the trees

Sample 7 Biblical species of Israel

Watch a JNF video

Sing Songs, Thank HaShem

Participate in planting trees in Israel

Please Join Us



Beth Emeth Congregation of the West Valley
13702 W Meeker Blvd
Sun City West, Az 85375



Purim is Coming!

Sisterhood is Baking 2,500 Hamantaschen!! Order Yours Now!

This year Purim falls on Thursday evening March 13th and Friday morning March 14th. There are four requirements for celebrating the holiday of Purim: hearing the reading of the *Megillah* (story of Esther), eating a *Se'udah* (festive meal), giving *Shalach Manot* (portions of sweet treats to family and friends), and *Mattanout l'Evyonim* (giving to the needy).

In connection with the giving of *Shalach Manot* the Sisterhood holds a giant **Bake Sale fundraiser** each year. Bags with eight Hamantaschen may be purchased to give to friends, complete with a greeting card from the sender. Individuals may also choose to purchase for **All our Congregants** and add their name to a tag with best wishes to it. Hamantaschen are also available by the Baker's dozen.

To hand make this volume of Hamantaschen, helpers begin in January, working 3-4 mornings a week for about 10 weeks. Different groups show up to work on any given day of the week. Everyone who participates is greatly appreciated! There are those that donate their oranges, or zest and juice the oranges, measure and mix the dough, roll, fill, shape, bake, package for freezing, and those who bag and tag, and help with distribution at pick up when Purim arrives! A job for everyone! **See the flier with baking days if you would like to help!** This type of undertaking can only be accomplished with your help!

The love they are made with is the secret ingredient that makes our Hamantaschen so delicious!

Our appreciation extends to all who support our efforts and purchase Hamantaschen. The Purim Bake Sale is the Sisterhood's major fundraiser that goes to support programming. A special thank you to those who add their name to the bag tag that is sent to the entire Congregation!

Order forms can be printed from our web site bethemethaz.org or the February Observer to send in with your list and payment: 13702 W Meeker Blvd, Sun City West, AZ 85375. Credit Card and Zelle payments for Baker's Dozens may be made by phoning our office M-F 9:00 am-noon 623-584-7210. Cash payments are only in person.

Orders will be available for pick up Wed & Sunday March 12th and 16th from 9-noon and after Megillah readings on March 13th and 14th. For special arrangements call Ketzi Toney 425-890-6792.





PURIM HAMANTASHEN BAG ORDER FORM

Please Print Clearly. Use additional paper and staple it on your form if necessary.

NAME OF PERSON PURCHASING: _____ **Contact number** _____

Be sure to add your name **TO THE TOP OF PAGE** if you use a second sheet!

Print Your name as you would like it on the tag and include your phone # in case of questions.

Cost **\$8.00** per bag, **\$7.50** per bag when ordering 10 or more bags ****List your name on bag to every congregant for \$136 .**

Baker's Dozens available for **\$15** per dozen, **mixed varieties** due to shortage of fillings.

Special request call Ketzi to confirm 425-890-6792

Please Print the names of the recipients for each of your bags ordered:

- | | |
|----------|-----------|
| 1. _____ | 7. _____ |
| 2. _____ | 8. _____ |
| 3. _____ | 9. _____ |
| 4. _____ | 10. _____ |
| 5. _____ | 11. _____ |

Yes, I want to send my wishes to **All the Congregants @ \$136:** _____

I have ordered #bags at \$ _____ per bag: _____

I would like to order _____ Baker's Dozens at \$15 per dozen: _____

My Total Order is: _____

Please pay by cash, credit card, or Zelle in person in the office as we must have your form with recipients' names.

Make Checks Payable to: Sisterhood Beth Emeth Congregation **Paid by check #:** _____

Paid by cash, credit card, or Zelle on date: _____

You may pay by phone if you are choosing to send a bag to all congregants or only ordering by the dozen. Office hours are **M-F 9-Noon 623-584-7210**

Order Deadline is Friday March 7th at noon

Pickup dates: March 12th and 16th 9-noon. (Also, after Megillah readings.)

Special arrangements contact Ketzi Toney 425-890-6792



A Beth Emeth Congregation of the West Valley Fundraiser

1st ANNUAL MAH JONGG TOURNAMENT

4 Rounds of Play



Sunday, March 16th 9:00 am – 3:00 pm

Tournament Play - \$50 per person

9:00 am Registration 9:45 am Review of Rules 10:00 am Play begins
3:00 pm Awards and Prizes

Kosher Continental breakfast and Lunch will be served.

Name: _____ Email: _____ Phone: _____

- I am willing to be EAST
 I'm willing to bring my Mah Jongg set

Payable by check (Beth Emeth Congregation, 13702 W Meeker Blvd, Sun City West, AZ 85375), Cash, Credit card or Zelle. RSVP by March 7th!

Contact Natalie Morrison: 3rdvicepresident@bethemethaz.org or the office at: **623-584-7210** for more information.



Our Biblical Garden

Back in 2006, the Biblical Garden looked like this...lush and beautiful!



Today it looks like this...overgrown and barren.



The passing of my sister, Rhoda, has taken great deal away from me. A few months ago, I walked thru our Biblical Gardens in search of a quiet place to sit and restore my thoughts. I was horrified at the shape the once beautiful gardens had turned into. I decided that it needed repair; replace, and replant everything that had died out. I can't do this alone for as you know it takes a village. I shared my concerns with my nephew Craig, who sent Beth Emeth Congregation a check for \$2500. I am so grateful for his generosity, BUT Your support of this project would be greatly appreciated. So far we have over \$3,000. Not enough, but enough to start reclaiming the beauty of the Gardens. In doing so, I would like to dedicate the "new" gardens in memory of Rhoda Lessner (z"l).

In the spirit of Tu B' Shevat, my sincerest appreciation in advance to all of you.

Marilyn Newberg, marilyn.newberg@bethemethaz.org



*May their memories be blessed.
As We remember them...*



The following Yahrzeits will be observed during Shevat.
Kaddish may be said at Friday evening services (6:00 pm), and Saturday morning services (9:30 am)
El Malei Rachamim, the Memorial prayer, may also be said at the Thursday morning Minyan
(9:00 am) preceding the Yahrzeit date.

The second yahrzeit of Rabbi Robert Sternberg z"l, is on the 9th of Shevat beginning the evening of Thursday, February 6th. We will be reciting the memorial prayer for Rabbi Sternberg at our regular Thursday morning service which begins at 9:00 am. Later that afternoon there will be a dedication of his memorial stone at Mt. Sinai Cemetery at 4:30 pm. This will be an opportunity for sharing memories and expressing gratitude for Rabbi Sternberg who served our Congregation as an interim Rabbi until his sudden passing two years ago.

Date	Hebrew Date	Deceased	Observant	Relationship
2/1	Shevat 3	Ida Feinstein	Arnold Becker	Sister
2/1	Shevat 3	Esther Greenberg	Allen Goodall	Mother
2/2	Shevat 4	Hannah Wolff	Janice Rothschild	Mother
2/3	Shevat 5	Gabriel Batavia	Susan Hinton	Father
2/3	Shevat 5	Aryh Silverman	Iris Silverman	Brother
2/4	Shevat 6	Jacob Lee	Joanie Jacobs	Father
2/4	Shevat 6	Leslie Merchant	Beverly Merchant	Sister-in-law
2/5	Shevat 7	Ludolf Heidecker	Andrew Heidecker	Father
2/6	Shevat 8	Bella Golda Giloni	Dov Giloni	Mother
2/6	Shevat 8	Hilda Wachs	Marvin Wachs	Mother
2/7	Shevat 9	Rose Rosenberg	Reva Litt	mother
2/11	Shevat 13	Shirley Nedelman	David Nedelman	Mother
2/15	Shevat 17	Joseph Fineberg	Sonia Marshall	Father
2/15	Shevat 17	Reyna Wachs	Marvin Wachs	Late Wife
2/16	Shevat 18	Marty Feldman	Iris Silverman	Brother-in-law
2/16	Shevat 18	Clara Perlmutter	Myron Perlmutter	Mother
2/18	Shevat 20	Mary Pinkus Halperin	Marilyn Newberg	Mother
2/19	Shevat 21	Jeanette Fisher-Roth	Shelly Moschel	Mother
2/19	Shevat 21	Yael Friedlander	Brad Friedlander	Father
2/20	Shevat 22	Solomon Kaplan	Mrs. Brenda Kleinman	Father
2/21	Shevat 23	Esther Forster	Paula Forster	Mother in law
2/22	Shevat 24	Alex Rothzeit	Saul Rothzeit	Father
2/23	Shevat 25	Carl Hoffman	Evelyn Dragiff	Brother
2/24	Shevat 26	Holly Strome	Suzan Giloni	Sister
2/25	Shevat 27	Regina Rosen	Dr. Bernard Rosen	Mother
2/26	Shevat 28	Judith Shane	Jamie Rothschild	Aunt

Todah Rabah for your generous support!

Yahrzeit Fund

In Memory of Hyman Finkelstein *By Brad and Marlene Friedlander*

In Memory of Laura Weingrad's Father

In Memory of Irwin Bernstein
By Alice Bernstein

In Memory of Carl Hoffman
By Evelyn Dragiff

In Memory of Dr. David Dragiff
By Evelyn Dragiff

In Memory of Lucille Ezraty
By Jack Ezraty

In Memory of Leslie Heidecker
By Andrew and Jan Heidecker

In Memory of Nancy Ann Vickery
By Susan Hersch

In Memory of Sophia Franek
By Susan Hersch

In Memory of William Pinkus
By Marilyn Newberg

In Memory of Marvin Davidson & Karen Shindler
By Sherry and Bradley Davidson

In Memory of Elliot Kleinman
By Brenda Kleinman

In Memory of Marcy Hamerschlag
By Martin Hamer

Yizkor/Yizkor Pledge

Phyllis Marcus

Sonia Marshall

Nancy Fladell

Aliyot

Gerald and Helen Brin

Ronald Paul

Tribute Cards

James and Esther Toney

In Honor of

Arthur and Barbara Bennett
By Arnold Becker

Fundraising

Rosemary Abrami

Bonita Bay

Barbara and Arthur Bennett

Gail Davis

Joy and Peter Epstein

Mary Flint

Marvin and Rita Wachs

Debra Gariepy

Sheldon Koven

Allen Goodell and Laverne Feingold

Carol Loewith

Lael Summer

Natalie Morrison

Brad and Marlene Friedlander

Stephen and Janice Rothschild

And Many Nonmembers!!!

Kiddush Fund

Anonymous

Diane Freilich

Stephen and Janice Rothschild

Biblical Garden

Craig Lessner - (z"l) Rhoda Lessner's son

Marilyn Newberg

Susan Hersch

General Fund

Martha Dalmeida

Charles and Marisela Erichsen

Hacienda de Sarah

Susan and Joel Last

Arlene and Howard Mandel

Beth Emeth Sisterhood (projector)

Jordan and Rosie Colbert

Evelyn Dragiff (IDF Supplies)

Film Festival Sponsors

Paradise Insurance

Sinai Memorial

Sunland Memorial

Susan Hersch

Morrie Hesch

William Kram and Diane Shapiro

Dr. Perry Fraiman

Rosemary Abrami

Camino Del Sol

Joy and Peter Epstein

Cranstoun Court Jewelers

Paula Forster

Grandview Terrace

Carol Loewith

Jerry and Ann Look

Shayne Sage and Kevin McMurtry

Ed Friedman

Reflecting donations posted 12/22-1/21

February 2025

Shevat



SUN 26 (26)	MON 27 (27)	TUE 28 (28)	WED 29 (29)	THU 30 (1)	FRI 31 (2)	SAT Feb 1(3)
<ul style="list-style-type: none"> 6:30pm Film Festival 	<ul style="list-style-type: none"> 6:30pm Film Festival 	<ul style="list-style-type: none"> 4pm Grief Support Group 	<ul style="list-style-type: none"> 2pm Beginning Hebrew - Don S 	Rosh Chodesh Sh'vat <ul style="list-style-type: none"> 9am Morning minyan 11am Torah Class - Reb Lev 	<ul style="list-style-type: none"> 5:42pm Candle lighting 6pm Friday Night Service 	Parashat Bo <ul style="list-style-type: none"> 9:30am Shabbat Service 6:46pm Havdalah (45 min)
2 (4) <ul style="list-style-type: none"> 1pm Developing Capable People 	3 (5)	4 (6) <ul style="list-style-type: none"> 4pm Grief Support Group 	5 (7) <ul style="list-style-type: none"> 2pm Beginning Hebrew - Don S 	6 (8) <ul style="list-style-type: none"> 9am Morning minyan 11am Torah Class - Reb Lev 	7 (9) <ul style="list-style-type: none"> 5:48pm Candle lighting 6pm Friday Night Service 	8 (10) Parashat Beshalach Shabbat Shirah <ul style="list-style-type: none"> 9:30am Shabbat Service 12pm Sponsored Kiddush 6:53pm Havdalah (45 min)
9 (11) <ul style="list-style-type: none"> 1pm Developing Capable People 	10 (12)	11 (13) <ul style="list-style-type: none"> 10am Sisterhood Meeting 4pm Grief Support Group 	12 (14) <ul style="list-style-type: none"> 2pm Beginning Hebrew - Don S 	13 (15) Tu B'Shvat <ul style="list-style-type: none"> 9am Morning minyan 11am Torah Class - Reb Lev 3pm Current Jewish Events 4pm Tu B'Shevat 	14 (16) <ul style="list-style-type: none"> 5:55pm Candle lighting 6pm Friday Night Service 	15 (17) Parashat Yitro <ul style="list-style-type: none"> 9:30am Shabbat Service 6:59pm Havdalah (45 min)
16 (18) <ul style="list-style-type: none"> 1pm Developing Capable People 	17 (19)	18 (20) <ul style="list-style-type: none"> 9:30am Board meeting 4pm Grief Support Group 	19 (21) <ul style="list-style-type: none"> 2pm Beginning Hebrew - Don S 	20 (22) <ul style="list-style-type: none"> 9am Morning minyan 11am Torah Class - Reb Lev 	21 (23) <ul style="list-style-type: none"> 6pm Friday Night Service 6:01pm Candle lighting 	22 (24) Mevarchim Chodesh Adar Parashat Mishpatim <ul style="list-style-type: none"> 9:30am Shabbat Service 12pm Sponsored Kiddush 7:05pm Havdalah (45 min)
23 (25) <ul style="list-style-type: none"> 1pm Developing Capable People 	24 (26)	25 (27) <ul style="list-style-type: none"> 4pm Grief Support Group 	26 (28) <ul style="list-style-type: none"> 2pm Beginning Hebrew - Don S 	27 (29) <ul style="list-style-type: none"> 9am Morning minyan 11am Torah Class - Reb Lev 3pm Current Jewish Events 	28 (30) Rosh Chodesh Adar <ul style="list-style-type: none"> 6pm Friday Night Service 6:07pm Candle lighting 	Mar 1(1) Parashat Terumah Rosh Chodesh Adar Shabbat Shekalim <ul style="list-style-type: none"> 9:30am Shabbat Service 7:11pm Havdalah (45 min)



Our logo, created by our member, the late Max Gimpel (z"l), is the Shield of David made into a calligraphic Interpretation of the Hebrew letters, Beit Aleph, which signify the name of our Congregation, BETH EMETH, House of Truth.

Beth Emeth Congregation Board

President	Tom Behrendt
1st VP	Marilyn Newberg
2nd VP	Ketzi Toney
3rd VP	Natalie Morrison
4th VP	Jordan Colbert
Treasurer	Brad Friedlander
Financial Secretary	Susan Hersch
Recording Secretary (acting)	Marlene Friedlander
Corresponding Secretary	Irene Lehrer

Directors

Arnold Becker
Arthur Bennett
Leah Tarnor
Harvey Zarensky
Marlene Friedlander

Sisterhood President

Ketzi Toney