



Beth Emeth

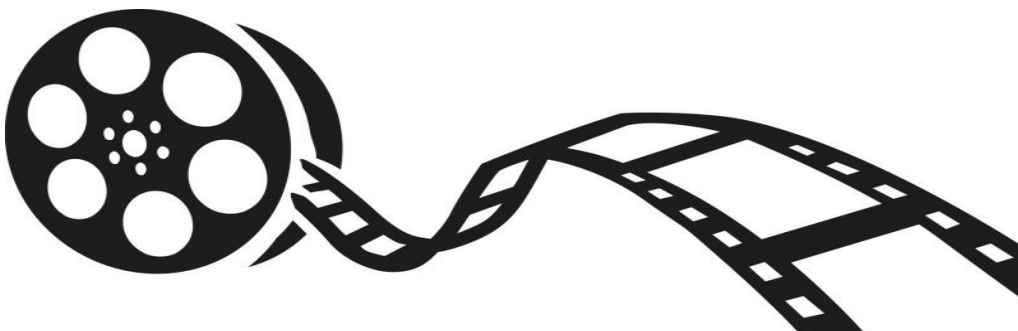
"More Than Just The Conservative Congregation of the West Valley, We Are A Community".

BETH EMETH CONGREGATION
13702 W. Meeker Blvd., Sun City West, AZ 85375
623-584-7210 bethemethaz@gmail.com
www.bethemethaz.org
Rabbi Tracee Rosen

TEVET - SHEVAT 5779
JANUARY 2019



SAVE THE DATE
JEWISH FILM FESTIVAL
January 26, 27, 28, 2019



Inside this issue

President's Message	2
Rabbi Tracee Rosen	3
Film Festival	7
Rosemary Abrami	8
Gift Shop/Sisterhood	9
Valley Beit Midrash	10
Musical Shabbat	13
Birthdays/Anniversaries	14
Shabbat Across Amer.	15
West Valley Singles	16
BJE West Valley Winter	17
2019 Class	
Calendar	27

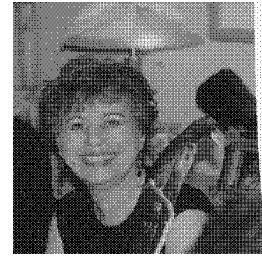
SABBATH CANDLE LIGHTING

JANUARY

4 5:15
11 5:21
18 5:28
25 5:35

Volume 2019
Number 39

Our President 2019



A NEW YEAR, A NEW BEGINNING, AND NEW PROGRAMS

Our building is 35 years old, and just as we have to go to doctors, the doctors of air conditioning, heat pumps, electrical and kitchen equipment, have to make house calls to Beth Emeth. Things like the carpeting, computers, fax machine, must be maintained. In order to do that, I must ask you help keep our building as the cost of repairs and equipment become more expensive every year.

A single donation in memory of, in honor of, an individual always is appreciated. Perhaps your neighbor helped you, this is a good way to show your appreciation.

The parking lot will have to be sealed sometime this year. You have been so generous by funding most of the cost of the lot, but just like our homes, repairs, updating, and maintenance must be done.

So, I am counting on all of us to put Beth Emeth close to the top of your gifting.

Marilyn Newberg

FROM THE DESK OF RABBI TRACEE ROSEN



Happy 2019! While we celebrated our spiritual new year a few months ago, as members of the world at-large, we can also rejoice together with the rest of humanity at the turn of the calendar. One of my favorite parts of the New Year's Eve festivities is watching the celebrations from all over the globe. Here we are celebrating the same event with the whole rest of the world, separated only by time zones. It's also a sign of optimism and hope that the coming year will be better than the one just past.

I know that for Beth Emeth, we are certainly looking forward to more opportunities to become a stronger community. Just this month we are looking forward to:

- On January 11, our second Shabbat Dinner and Musical Service will feature our own Sid Engel. Please join us for a great evening. Over 80 people attended in November and had a great time. Reservations are a must for dinner.

Our future dates for this fun event are March 1, as we participate with shuls from all over the US & Canada in "Shabbat Across America." Our guest musician will be Scott Leader, and on May 10, we will conclude the first season with a return of Susan Colin.

In February, April, and June, the second Friday of the month will also feature music, as we welcome our choir to the bimah. Please mark your calendars.

- A new adult education series begins January 16 through February 6, with Bureau of Jewish Education classes taught by Rabbi Shelly Moss and me. Please see the flyer for more details.
- Our partnership with Valley Beit Midrash welcomes Rabbi Tirzah Firestone for an engaging talk on the Shechinah, the Feminine Face of God on Monday, January 21.
- And of course, the highlight of our social season is the Jewish Film Festival on January 26-28. I'm looking forward to seeing you all for these 3 great films.

Finally, the deadline is approaching to register for our congregational Israel trip coming up the end of March. We need a minimum of 15 people to go. I know that the drop in the stock market has us all legitimately nervous about our finances right now, but as it did after 2008, the market will rebound. If you are able to join us in this once in a lifetime opportunity, you must register by the end of this month. Please call 1-888-811-2812 or visit fasttravel.com, and search for Beth Emeth. You don't need to be a member, so please invite a friend or 2.

Wishing everyone a joyous and PROSPEROUS new year,

Rabbi Tracee Rosen

2018 HANUKKAH PARTY



11 Reasons Why We Don't Forgive Others, and Overcoming Them.

All In A Few Hours!

Forgiving is one of the most difficult decisions a human being can make in their lifetime. Is there someone in your life who you cannot forgive?

WHY?

Learn the answer to this question and many other important questions by attending this special presentation conducted by Robert Corbin.

ABOUT THE AUTHOR:



Rob Corbin began conducting programs on forgiveness shortly after losing his father to suicide in June of 2008. With the tragic death of his father, Rob had a realization of a truth that he never confronted in his own life. The truth of accepting that he had been living a life filled with anger, resentment and bitterness towards his dad for the extreme discipline he experienced at the tender age of 6 years old. The truth hit hard. He was living in an emotional cage for 46 years – and by his own choice! This choice resulted in pain and he was never able to find peace or forgive his father until it was too late.

While the death of his father was tragic, at that moment Rob's life took on a new purpose. Rob embraced the need and desire to learn and share with others how to forgive. To forgive both ourselves, and others is powerful, and forgiving is a decision we are free to make at any time.

**Thursday, February 14, 2019 12:30 p.m. to 3:30 p.m. Donation \$10.00
Beth Emeth Congregation 13702 W. Meeker Blvd. SCW 85374
SPACE IS LIMITED R.S.V.P. TODAY 623-584-7210 www.bethemethaz.org**

**It takes two to hurt
But Just ONE to FORGIVE**

Cultivating an Attitude of Gratitude The Counting of our Blessings Opportunity

Truly, Judaism directs us to foster mindfulness and an attitude of gratitude, appreciation directed to HaShem for that which we have personally been blessed! Learning to stop and recognize our blessings, not only those we are mindful of, but also those we may have overlooked, fosters a sense contentment and of well being. The Rabbis incorporated this fundamental principle into our daily morning prayers, as our blessings start each day as we open our eyes and are able to thank G- d for a new day of life, even as we struggle with our individual challenges.

Here is an opportunity to: "Count your blessings", and make them count! Listed below are 18 Blessings, you can certainly add more....calculate a small tribute amount for each, as you are able, tally them up, and make a donation to Beth Emeth towards it's ongoing needs to support you the congregant in prayer, for simchas and sorrows, and for our growing number of wonderful social/community events!

- ☐ *Enjoy counting your Blessings and helping us grow!*
- ☐ *Awaking to a new day of life*
- ☐ *Being able to See*
- ☐ *Being able to Hear*
- ☐ *Being able to get out of bed (assisted or unassisted)*
- ☐ *Having Regularity of bodily functions*
- ☐ *Being able to Walk with or without an assistive device*
- ☐ *Having a place to live*
- ☐ *Having Food to eat*
- ☐ *Having Clean water to drink and bath*
- ☐ *Having Clothing to keep warm*
- ☐ *Having Family and special relationships (you can break these out)*
- ☐ *Appreciating the Natural beauty that surrounds us*
- ☐ *Companionship of a pet*
- ☐ *Strength to face challenges*
- ☐ *Freedoms we enjoy as we are not slaves*
- ☐ *Having the State of Israel*
- ☐ *Being a Jew and having Pride in our Jewish Heritage*
- ☐ *Having a Synagogue in the area I live in, being part of a community*

Our ancestors brought their tributes of thanksgiving to the Temple, today we can give to the Shul... We hope you will send in your check and *Make your Blessings Count!*

Beth Emeth, 13702 W Meeker Blvd. Sun City West, AZ 85375

Name _____

_____ Name amount enclosed

SAVE THE DATE

JEWISH FILM FESTIVAL

January 26, 27, 28, 2019

SATURDAY, JANUARY 26th at 6:30 p.m.
HEADING HOME: THE TALE OF TEAM ISRAEL

Israel's national baseball team competes in the "World Baseball Classic" for the first time. Teammates included many Jewish-American major leaguers most with a tenuous relationship to Judaism having never been to Israel.



The film now takes them on their first journey to Israel (from Tel Aviv to Jerusalem) where they discover "What it means to be Jewish". Visiting Israel and representing it on a world stage in Seoul Korea defies the world's expectation. With Mensch on a Bench as their mascot, and a pride in representing Israel, they finished in 6th place.

SUNDAY, JANUARY 27th at 6:30 p.m.
THREE IDENTICAL STRANGERS



On July 12, 1961 triplets were born in New York and then separated at birth and adopted by three different families of different economic levels. Then in 1980 these three complete strangers accidentally meet and discover that they are identical triplets.

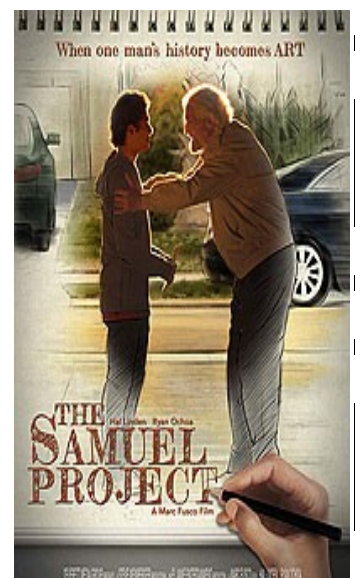
This movie follows their reunion and their incredible story.

Once an unimaginable secret is revealed, the emotional impact is stunning. This is one of the most fascinating stories ever told where truth is stranger than fiction.

MONDAY, JANUARY 28th at 6:30 p.m.
THE SAMUEL PROJECT

Hal Linden as grandfather Samuel becomes the subject of his grandson Eli's animated art project in the sharing of history between generations.

Samuel, a San Diego dry cleaner and Eli an outcast high school teen connect to discover Samuel's surprising past. This is a sensitive story about intergenerational communication and the importance for the 3rd generation to learn about the holocaust in a way where art can be more eloquent than words.



“WHAT WE DO AND WHY DO WE DO IT”

(To be honest, though, this one should be titled “What I used to do, don’t now and don’t know what to do instead”)

Many English and South African Jews, upon greeting a mourner – for example at a funeral or at shiva - use the expression "I wish you a long life". The same phrase is used when, for example, a name is listed in the yahrzeit list and you want to acknowledge to the person observing the date that you paid attention.

When I came to live in America I found that no one used that wording and, for the first time in my life, I wondered where it originated. This is one explanation: The Hebrew original of this greeting is richat yamim, "length of days" or chayim aruchim, "long life."

Although it may seem incongruous, this greeting is even offered to an elderly person. Judaism attaches such a high premium to every moment of life that we wish everyone, young or old, length of days to carry out his/her sacred purpose in this world. The greatest blessing we can receive is the promise of long life, one especially dear in the face of a recent bereavement or when recalling a death on its anniversary.

American Jews do not use and are mostly not familiar with the expression "I wish you a long life" and despite the fact that I have lived here for nearly thirty years I still find it popping into my mind (even though I never verbalize it) because I just don’t know what else to say! Somehow, if I meet a person who has suffered the loss of a dear one “I’m sorry” doesn’t trip easily off my tongue and on a yahrzeit there doesn’t seem to be any standard phrase that I’ve ever heard by which I can honor that person.

Does anyone else know this tradition? Or is there another one that I’ve never learned?

Rosemary Abrami

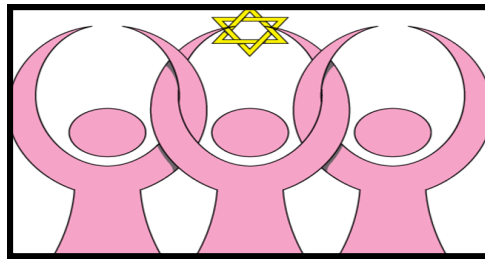


COME AND SHOP

WE ARE HAVING A WONDERFUL 30% OFF SALE ON OUR CHANUKKAH ITEMS AND JEWELRY UNTIL THE END OF FEBRUARY.



SISTERHOOD



Thank you to the wonderful ladies that have been coming and doing amazing baking here at the Beth Emeth kitchen. Everything is delicious and made with love. Thank you to the potato pancake ladies that made our Hanukkah so wonderful. We look forward to all of your help in 2019. Happy & Healthy New Year!



Join us as the West Valley welcomes
Valley Beit Midrash for another
season of Jewish learning.



**Beth Emeth Congregation
of the West Valley**
13702 W Meeker Blvd
Sun City West, AZ 85375



**JEWISH
WORSHIP
GROUP**

Jewish Worship Group
Surprise Hampton Inn
14783 West Grand
Avenue Surprise, AZ
85374

**West Valley Programs
Co-Sponsored By**



Joani Frankel, PLLC
602-919-1256



**JEWS ON THE BIG SCREEN:
UNDERSTANDING NEW
ISRAELI FILM AND TELEVISION**

Professor Shai Secunda
Thursday, October 18 | 1 PM
Jewish Worship Group



**SONGS OF GENERATIONS;
JEWISH HISTORY THROUGH
YIDDISH SONG**

Rabbi Auram Mlotek
Monday, November 5 | 1 PM
Beth Emeth Congregation of the West Valley



**THE HEROIC ESCAPE TO JAPAN
AND CHINA DURING THE
HOLOCAUST- THE FUGU PLAN!**

Rabbi Marvin Tokayer
Tuesday, December 4 | 1 PM
Beth Emeth Congregation of the West Valley



**SHE WHO DWELLS WITHIN:
SHECHINAH, THE FEMININE
FACE OF GD IN TORAH,
MYSTICISM, AND OUR WORLD**

Rabbi Dr. Tirzah Firestone
Monday, January 21 | 1 PM
Beth Emeth Congregation of the West Valley



**THE LIFE AND LEGACY OF ELIE
WIESEL: A STUDENT'S
PERSPECTIVE**

Rabbi Dr. Ariel Burger
Monday, February 4 | 7 PM
Jewish Worship Group



**A LAND OF TWO PEOPLES:
MARTIN BUBER AND BI-
NATIONALISM IN PALESTINE**

Professor Sam Brody
Monday, March 25 | 1 PM
Beth Emeth Congregation of the West Valley

Panel Discussion featuring Rabbi Tracee Rosen



**JEWISH LITERACY:
THE IMPORTANCE OF
THE PAGE**

Panelists Rabbi Micah Caplan of
Congregation Or Tzion, Rabbi Tracee Rosen
of Beth Emeth Congregation of the West
Valley, and Suzanne Swift of the Jewish
Book Council. Facilitated by local author,
Judy Laufer.

**Wednesday, January 30
7PM | Temple Chai**

**Suggested donation:
\$18 per event**

**Register online:
www.valleybeitmidrash.org**

**Season Passes available:
VIPs, individuals, couples,
and young professionals**

Valley Beit Midrash is a collaborative organization that brings new, exciting, and relevant Jewish programs
to the Greater Phoenix Jewish community in a diverse, welcoming, engaging, and pluralistic setting.
www.ValleyBeitMidrash.org

Join us as the Beth Emeth
Congregation of the West Valley
welcomes Valley Beit Midrash for
another Jewish learning opportunity.



Valley Beit Midrash
Presents



RABBI DR. TIRZAH FIRESTONE

*She Who Dwells Within: Shechinah,
the Feminine Face of Gd in Torah,
Mysticism, and Our World*

MONDAY, JANUARY 21 | 1 PM
\$18 SUGGESTED DONATION
BETH EMETH CONGREGATION
OF THE WEST VALLEY

Co-Sponsored By



Joani Frankel PLLC
602-919-1256

For more information or to register, visit
www.valleybeitmidrash.org

JEWISH TRIVIA - THINGS THAT YOU MIGHT NOT HAVE KNOWN

Continued from last month's Observer.

13. At Sammy's Romanian Steak House on Chrystie and Delancey, every table is provided with a bottle of chicken fat as a condiment; resident emcee Dani Luv entertains diners with renditions of Jewish standards and punchy Borsht Belt humor.

14. One of the first kosher Chinese restaurants in New York was Moshe Peking, whose all-Chinese wait staff wore yarmulkes.

15. The Second Avenue Deli opened in 1954 in the then-fading Yiddish Theater District. It featured a Yiddish Walk of Fame on the sidewalk outside its original location on Second Avenue and Tenth Street, and served up such Jewish specialties as matzo ball soup and corned beef. In 2007, it closed and reopened in Murray Hill.

16. Famed music club CBGB was opened in 1973 by Jewish founder Hilly Kristal.

17. Mayor La Guardia, who served for three terms from 1934 to 1945, was born to a Jewish mother and descended from Rabbi Samuel David Luzzatto, but practiced as an Episcopalian.

18. The Jacob K. Javits Convention Center was named in honor of the Jewish U.S. senator, who served from 1957 to 1981.

19. Sig Klein's Fat Men's Shop opened in the late 1800s at 52 Third Ave. and carried plus-sized clothes for men. Its sign featured the slogan: "If everyone was fat there would be no war."

20. Abraham Beame was the first practicing Jew to become mayor of New York. He held office from 1974 to 1977.

21. The popular and proudly Jewish mayor Ed Koch, who served from 1978 to 1989, was known for the phrase "How'm I doing?" which he would ask passersby while standing on street corners or riding the subway. Newsday called him the "ultimate New Yorker."

22. The erection of the Brooklyn Bridge in 1883 and the Williamsburg Bridge in 1903 catalyzed a Jewish exodus from the Lower East Side to Southside Williamsburg. Crossing the bridge on foot, the LES's Jews left in search of better living conditions.

23. By 1930, more than 40% of New York City's Jews lived in Brooklyn.

24. Jewish-fronted band The Ramones formed in the Forest Hills neighborhood of Queens in 1974.

JOIN US FOR OUR MUSICAL SHABBAT

Friday, January 11, 2019 at 5:00 p.m.

We hope that you will attend and enjoy the music and the services.



For Members it is \$10.00 and Non-members \$12.00

Please call Sandy at 623-584-7210 to make your reservation. We look forward to seeing you and we know you will enjoy this musical Shabbat.



Birthdays & Anniversaries

JANUARY 2019

HAPPY BIRTHDAY

***3 Audrey Albert
11 Sunnie Saperstein
13 Dr. Melvyn Friedman
16 Joy Beth Epstein
18 Jan Heidecker
26 Bernard Harris***

HAPPY ANNIVERSARY

***10 Irwin & Alice Bernstein
25 Elliot & Brenda Kleinman***



DONATIONS

**CC's Adult Care Two Inc. Rosie Colbert
CC's Adult Care Inc. Silvia Choy**

Thank you Ketzie & Natalie for baking all those wonderful cakes for Onegs and Kiddushes.

Irma Epstein is the winner of the Tzedaka box. She brought the box with the most money.

Thank you Sisterhood for your kind and generous gift. Sandy



“Turn an ordinary Friday night into something extraordinary!”

On Friday night, March 1, 2019, hundreds of synagogues across the continent will take part in an historic national Jewish event to celebrate what unifies all Jews — Shabbat! Everyone is invited... singles, couples, families — all ages.

That’s the magic of Shabbat Across America and Shabbat Across Canada. By participating in this continent-wide event, you will not only have the opportunity to experience Shabbat, but you will be sharing your experience with tens of thousands of Jews across North America.

No matter what your affiliation or which Shabbat Across America or Shabbat Across Canada location you choose to attend, NJOP’s annual Shabbat program will give you a “taste” of Shabbat.

Shabbat services, traditional rituals, delicious meals, beautiful music and lively discussions. These are all important components of the Shabbat experience, as well as the opportunity to spend the evening with like-minded people, friends and family.

Beth Emeth Congregation, 13702 W.. Meeker Blvd, Sun City West, AZ 85375

Telephone number 623-584-7210 - Website, bethemethaz.org

RESERVATIONS TAKEN AFTER JANUARY 15th

DEADLINE FEBRUARY 22, 2019

MEMBERS IS \$10.00 - NON MEMBERS \$12.00



WEST VALLEY SUPER JEWISH SINGLES

Single, Jewish and 55 or older?
We're forming a new group for finding
friends, fun, and camaraderie.



**First group meeting is for a
“Meet-N-Greet”**

**Sunday January 20th 2019
from 2:00 to 4:00 pm at
Temple Beth Shalom
12202 101st Ave. Sun City, AZ**

**Soft drinks, coffee and desserts will be served.
THERE IS NO COST**

**Bring ideas of the types of events you'd like to see.
Contact our initial coordinator - Helene
RSVP to Helene before January 18th
email: HRFoxie@cox.net**

**BJE WEST VALLEY WINTER 2019 CLASSES @
BETH EMETH CONGREGATION IN SUN CITY WEST
13702 W. Meeker Blvd, Sun City West, AZ 85375
Beginning Wednesday, January 16, 2019**

- **First Hour: 9:30 a.m. - 10:30 a.m.**
- **Judaism 101 with Rabbi Sheldon Moss - Four Weeks**
Wednesday, January 16, January 23, January 30, February 6
- **Jewish Views on Dying & the Afterlife with Rabbi Tracee Rosen - Four Weeks**
Wednesday, January 16, January 23, January 30, February 6
- **Second Hour: 10:40 a.m. - 11:40 a.m.**
- **Current Events - Israel & the Middle East with Rabbi Sheldon Moss. Four Weeks**
Wednesday, January 16, January 23, January 30, February 6
- **Torah Thru the Eyes of the Commentators with Rabbi Tracee Rosen. Four Weeks**
Wednesday, January 16, January 23, January 30, February 6

REGISTRATION Winter '19 BJE WEST VALLEY JEWISH LEARNING

Please charge my credit Visa/MC/ AMEX/Discover. \$60. for one class; two classes - add \$10. for a total of \$70.

Name _____ Street _____ State: _____

Zip: _____ Day Phone: _____ Email: _____

Card #: _____ Exp. _____ CCV Code: _____

Name on Card _____ Name of Courses(s) _____

Amt.: \$ _____ Signature: _____

Please make checks payable to Bureau of Jewish Education. Thank you!

BJE Bureau of Jewish Education 12701 N. Scottsdale Rd. Suite 206, Scottsdale, AZ 85254.

480-634-8050 or online www.bjephoenix.org

Find comfort in our garden. It is tranquil in design and in harmony with its natural surroundings. The Biblical Garden is a quiet haven in which to find solace and to rejoice in life.

We welcome your participation in enhancing our garden through your generous contributions to honor, remember, or celebrate a simcha.

An appropriate plaque acknowledging your gift will be placed on the DONOR WALL in the lobby of the synagogue.

Suggested dedicated items

*Trees\$500
Shrubs\$300
Bulbs, Perennials, and
seasonal flower displays..... \$250*

OBSERVER ADS

TEN ISSUES PER YEAR—Sizes & Prices

Business Card\$75.00

1/4 Page\$125.00

1/2 Page\$200.00

**Full Page 10x7.5
\$300.00**

One-Time Full Page Insert.....\$70.00

**Contact the office to place your ad
(623) 584-7210**

**NEW REDUCED
PRICES**

FRAMECRAFT

Complete Custom Picture Framing Services

Gordon Gluth • 623-583-3133

Conservation Framing • Shadow Boxes
Design Consultation • Needlework and More
Over 30 Years Experience

Hours 9-5 Tues-Sat. Closed Sun. & Mon.

17138 N. 134th Dr. #101 • Surprise, AZ 85378
www.framesurprise.com

WOOD DOCTOR

All Phases of Interior Woodwork

Crown Moulding • Baseboards • Doors, Trimwork & Casings
Wood & Laminate Flooring • Cabinets • Mantles • Bookcases

ROB: 602-284-4990

www.wooddoctoraz.com • info@wooddoctoraz.com

30 Years Experience • Dependable • All Work Guaranteed

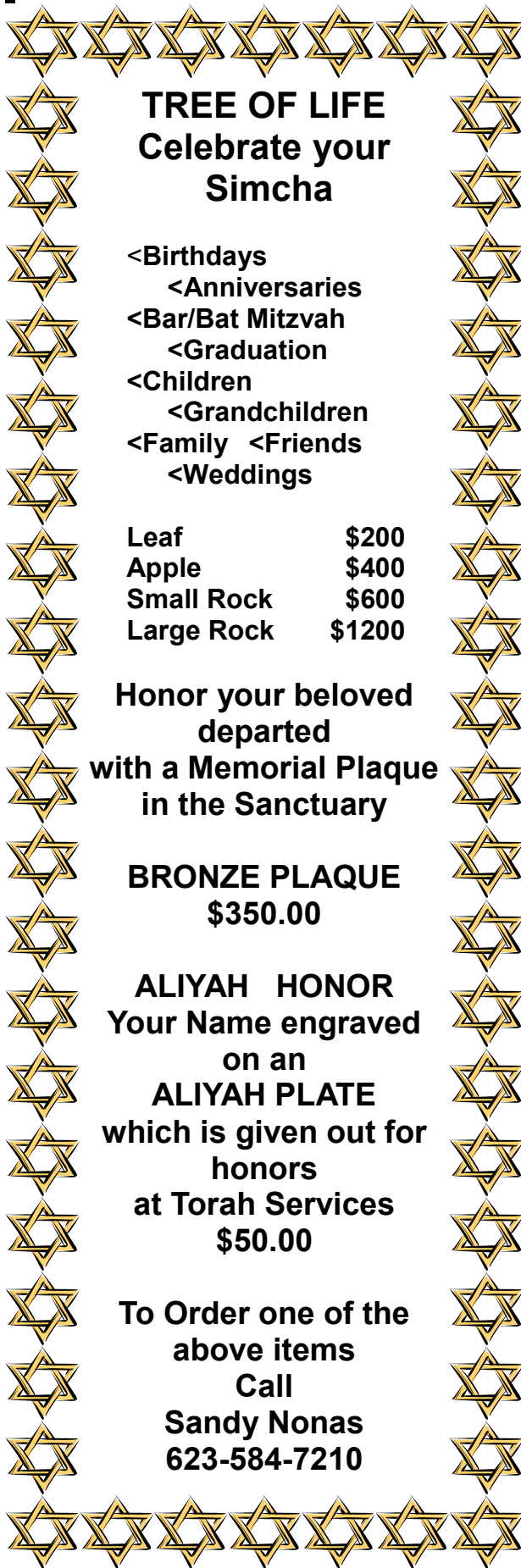
MUSHKATEL, ROBBINS & BECKER, PLLC

Attorney

15249 N. 99 Avenue

Sun City, Arizona 85351

623-889-0691



TREE OF LIFE
Celebrate your
Simcha

<Birthdays
<Anniversaries
<Bar/Bat Mitzvah
<Graduation
<Children
<Grandchildren
<Family <Friends
<Weddings

Leaf	\$200
Apple	\$400
Small Rock	\$600
Large Rock	\$1200

Honor your beloved
departed
with a Memorial Plaque
in the Sanctuary

BRONZE PLAQUE
\$350.00

ALIYAH HONOR
Your Name engraved
on an
ALIYAH PLATE
which is given out for
honors
at Torah Services
\$50.00

To Order one of the
above items
Call
Sandy Nonas
623-584-7210

CALENDAR OF REGULAR
EVENTS

(Exceptions do happen, so please
check)

- **Executive & Board Meeting**
3rd Friday of each month -
10:30 a.m.
- **Minyan**
Mondays & Thursdays - 8:00 a.m.
- **Friday Evening Services -**
6:30 p.m.
- **Saturday Morning Services**
9:00 a.m.

CC's Adult Care Inc.

13425 W. Rimrock St., Surprise, AZ

Phone: 623-544-7229

Mgr/Owner: Sylvia Choy

"YOUR FAMILIES LOVE THROUGH US"

SOME OF OUR SERVICES AND AMMENITIES

24 Hour Certified Caregivers

Alzheimer's Care

Phone, Cable TV, Internet

Housekeeping/Laundry

Beauty/Barber Service

Home Cooked Meals

Hospice and Respite Care

Doctors Visits

Restroom/Bathing Assistance\Medication Mgt.

We celebrate Holidays, Birthdays and Anniversaries

For Quality Care and Secure Comfort

Visit Our Home

MONTHLY RATE IS FIXED AT MOVE-IN AND WILL NOT INCREASE.

**ALL SERVICES AND SUPPLIES ARE
INCLUDED EXCEPT PRESCRIPTION MEDICINES.**

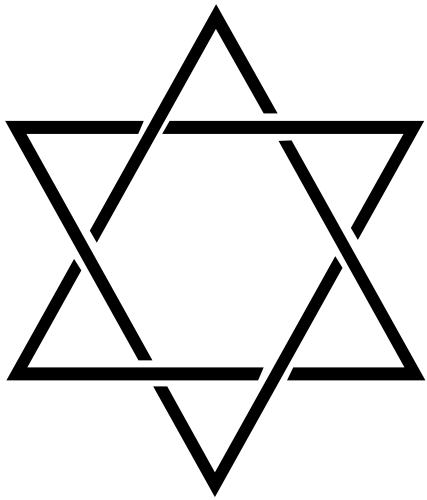
Jewish Family and Children's Service (JFCS)

Ellie Schwartzberg of Jewish Family and Children's Service (JFCS) offers individual counseling, referral to appropriate resources and advocacy to Jewish people living in the Sun Cities and surrounding communities.

This is a free program underwritten by the Jewish Federation. Ellie has a Master's degree in counseling from ASU and has been at JFCS for the past 32 years working with an older population. She is currently the Vice President of Geriatric Services at JFCS. Ellie offers this program at the Sun Cities Community Services Building on Tuesdays (9451 N. 99th Ave. Sun City) and at Beth Emeth Synagogue (13702 W. Meeker, Sun City West) on Thursdays. Counseling addresses such issues as coping with bereavement and loss, caregiving stress, long term planning and decision making, adjustment to chronic health problems, loss of independence, depression, couples' issues, communication and problem solving with adult children, etc.

Ellie facilitates a Bereavement Support Group at Beth Emeth Congregation every Thursday from 1:00-2:00 PM. This group is open to anyone who has lost a spouse or significant other within the past two years.

Please call Ellie Schwartzberg at **602-452-4660** for more information or to make an appointment.



SINAI MORTUARY

Family Owned & Operated Since 1971

♦Raymond Perlman, Director

♦Jonathan Perlman, Director

Arizona's only Funeral Home endorsed
by the entire Rabbinical Council.

*Every family meets with a licensed
Funeral Director with over 10 years experience
in a Jewish Funeral Home*

602-248-0030

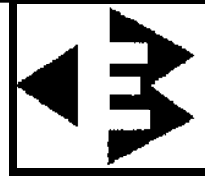


David J. Dobrusin, CPA, PLLC
Certified Public Accountant
An experienced full service accounting firm.

- **Individual Tax Returns**
- **Business Tax Returns**
- **Trust & Estate Tax Returns**
- **Accounting & Auditing**
- **Tax Planning**
- **Consulting**

10240 W. Bell Road, Suite C
Sun City, AZ 85351
623.977.1773 phone
623.977.4842 fax
www.suncitycpa.com

FREE Initial Consultation



623-583-0377

EyesWest Optical

Eyeglasses—Contact Lenses

The quality you want.

The service you deserve.

Scott Fineman
Licensed Optician

12801 West Bell Road, Suite 139
Surprise, Arizona 85378
(Crossroads Towne Center)
eyeswest@aol.com



Mt. Sinai

A Jewish Cemetery that cares about the Jewish Community

Traditional Jewish burials
Caring professional staff
Intermarried section available

24210 N. 68th Street, Phoenix, AZ 85054
(off Pinnacle Peak Rd)
(480) 585-6060 • mtsinajcemetery.com



Christopher Stalberg, M.D.

Internal Medicine / Geriatrics

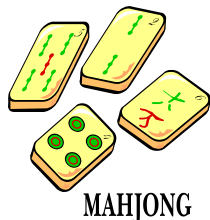
14418 W. Meeker Blvd., Ste. 210

Sun City West, AZ 85375

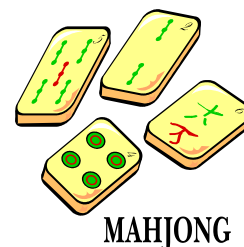
Phone: (623) 544-8400

Fax: (623) 544-8989

www.christopherstalbergmd.com



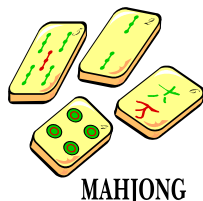
Mah Jongg Cards



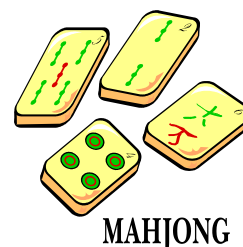
Now is the time to think about ordering your 2019 Mah Jongg cards. When you, family, friends and neighbors order your cards through Beth Emeth Sisterhood, a portion of the cost of each card is remitted to Sisterhood. It is an easy fund raiser in which to participate.

Standard Print Size \$8.00
Large Size \$9.00

Make Checks payable to: Beth Emeth Sisterhood



Send or bring orders to:
Beth Emeth Sisterhood
Attn.: Gloria Greenberg
Beth Emeth Congregation,
13702 W. Meeker Blvd., SCW 85375



The National Mah Jongg League, Inc. will mail each card, individually, to you personally, therefore an address must accompany each order.

It is imperative that the name and address be included for each card ordered. If you are sending in a list, be sure that the name and address for each person on the list is included.

Name: Last _____ First _____

Address: _____

City _____ State _____ Zip _____

Standard Size (\$8.00) _____ Large Size (\$9.00) _____

DEADLINE IS JANUARY 20th

David Robinson, CFP®
Wealth Advisor
CEO & Founder

Esplanade I
2425 E. Camelback Rd. Suite 620
Phoenix, AZ 85016
P: 602.224.7850 F: 602.224.7860
E: drobinson@rtsadvisors.com

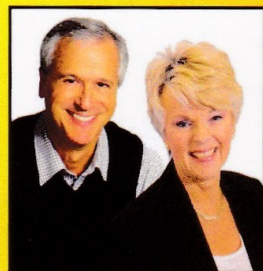
www.rtsadvisors.com



surprise rental
EQUIPMENT • PARTY RENTAL
623.546.3400
www.SurpriseRental.com

Help Support Beth Emeth!

Did you know you can support Beth Emeth just by shopping at Fry's? It's easy when you enroll in Fry's Community Rewards! To get started, sign up with your V.I.P Card, and select Beth Emeth Congregation as the local organization you wish to support. Once you're enrolled, you'll earn rewards for Beth Emeth every time you shop and use your V.I.P Card!



AZ Life Style Homes

www.AZLifeStyleHomes.com

Trish Trovato (623) 523-3402

TrishAZ@LongRealty.com

Jim Haubrich (623) 466-2434

JimH@LongRealty.com

Office (623) 584-5384

LONG REALTY
SINCE 1926
WEST VALLEY
14245 W Grand Ave., Suite 1, SURPRISE, AZ 85374
Independently Owned and Operated



Sunland

Memorial Park Mortuary and Cremation Center

**15826 Del Webb Blvd
Sun City, AZ 85351**

Office.....(623) 933-0161

Fax.....(623) 974-2111



January 2019
24 Tevet 5779 - 25 Shevat 5779

Sunday	Monday	Tuesday	Wednesday	Thursday	Friday	Saturday
		1	2	3 Minyan 8:00 a.m. Bereavement 1:00 p.m.	4 Services 6:30 p.m.	5 Services 9:00 a.m.
		24 Tevet	25 Tevet	26 Tevet	27 Tevet	28 Tevet
6	7 ROSH HODESH Minyan 8:00 a.m.	8	9	10 Minyan 8:00 a.m. Bereavement 1:00 p.m.	11 Musical Shabbat - Dinner 5:00 p.m. Services 6:30 p.m.	12 Services 9:00 a.m.
29 Tevet	1 Shevat	2 Shevat	3 Shevat	4 Shevat	5 Shevat	6 Shevat
13	14 Minyan 8:00 a.m.	15	16 BJE West Valley Winter 2019 Classes First Hour 9:30-10:30 a.m. Secnd Hour 10:40 - 11:40 a.m.	17 Ten Commandments 10:00 - 11:30 a.m. Minyan 8:00 a.m. Bereavement 1:00 p.m.	18 Services 6:30 p.m. Exec. Board/Director Mtg. 10:30 a.m.	19 Services 9:00 a.m.
7 Shevat	8 Shevat	9 Shevat	10 Shevat	11 Shevat	12 Shevat	13 Shevat
20	21 TU B'SHEVAT Valley Beit Midrash 1:00 p.m. Rabbi Dr. Tirtzah Firestone Minyan 8:00 a.m.	22	23 BJE West Valley Winter 2019 Classes First Hour 9:30-10:30 a.m. Secnd Hour 10:40 - 11:40 a.m.	24 Minyan 8:00 a.m. Bereavement 1:00 p.m.	25 Services 6:30 p.m.	26 Services 9:00 a.m. Film Festival 6:30 p.m.
14 Shevat	15 Shevat	16 Shevat	17 Shevat	18 Shevat	19 Shevat	20 Shevat
27 Film Festival 6:30 p.m.	28 Film Festival 6:30 p.m. Minyan 8:00 a.m.	29	30 BJE West Valley Winter 2019 Classes First Hour 9:30-10:30 a.m. Secnd Hour 10:40 - 11:40 a.m.	31 Minyan 8:00 a.m. Bereavement 1:00 p.m.		
21 Shevat	22 Shevat	23 Shevat	24 Shevat	25 Shevat		

[Candle Lighting, Observance End, Printed December 28, 2018/20 Tevet 5779 for Phoenix, AZ]

Our logo is a Shield of David made up of a calligraphic interpretation of the Hebrew initials of the Congregation, BETH EMETH, which means House of Truth.



NON-PROFIT
ORG.
U.S. POSTAGE
PAID
SUN CITY, AZ 85351
PERMIT NO. 73

**Beth Emeth Congregation of the
West Valley**
13702 W. Meeker Blvd.,
Sun City West, AZ 85375

Phone: 623-584-7210
Email: bethemethaz@gmail.com

Web Site: www.bethemethaz.org

Office Hours: 8 am.- 1 pm. M-T-F
8 am - 12:00 Wednesday
Thursday 8 am - 2:00 pm

Or Current Resident

THE OBSERVER

**ARTICLES TO BE PUBLISHED
MUST BE SUBMITTED BY THE
10TH OF THE PREVIOUS MONTH**

Beth Emeth Congregation Board

OFFICERS

Marilyn Newberg
Jordan Colbert
Rhoda Lessner
Irv Glorit
Rhoda Lessner
Cheryl Bookman
Shula Kantor
Rhoda Lessner

President
Vice President
Vice President
Vice President
Acting Treasurer
Acting Financial Secretary
Recording Secretary
Corresponding
Secretary

DIRECTORS

Cheryl Bookman
Sid Engel
Gloria Greenberg
Irene Lehrner
Nelson Magedman
Alice Mason
Natalie Morrison
Robert Summer

Sisterhood President
Alice Mason

Men's Club
President

Gene Cooper/Norm
Kurtz